

LADD AAF (FBK)(PAFB) A 2 E UTC-9(-8DT) N64°50.26' W147°36.87'

FAIRBANKS

449 B TPA—See Remarks NOTAM FILE PAFB

H-1B, L-3A, 3D, 4J

RWY 07-25: H8575X150 (ASPH-CONC) D-38 HIRL

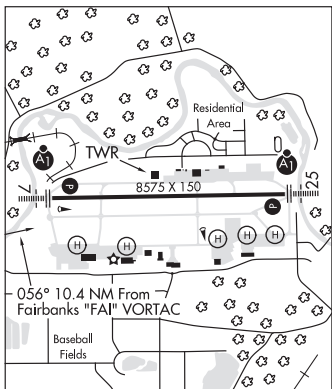
DIAP

RWY 07: ALSF1. REIL. PAPI(P4L)—GA 3.0° TCH 67'. Trees road. Rgt ttc.

RWY 25: ALSF1. REIL. PAPI(P4L)—GA 3.3° TCH 67'. Trees/road.

SERVICE: FUEL, J8 LGT When twr clsd ACTVT afld lgts—CTAF. Rwy 25 PAPI not coincident with PAR. Rwy 07-25 apch lgts nstd. PAPI maint the last Wed of the month 0900-1200/1800Z-2100Z. PAPI na during this time.

MILITARY REMARKS: Opr Mon-Fri 1700-0800Z. CTN: Lgtd hwy part to and N of Rwy 07-25 can be confused with rwy. CAUTION: Road apch end of Rwy 07 and Rwy 25. No ovrms. Bird act invof arpt. ALERT: Nmrs night device acft ops invof Ladd AAF; exp nmrs dimly lit acft in Tannana Flats and Yukon trng areas durg hr of darkness and wkday Sep-Apr. Unlgtd twr 150' AGL 1/2 NM North of arpt. CTN: 100 ft mkd lgt pole 3/4 NM SE. North ttc pat R/W and MQ-1 gray eagle only; Lrg acft—ramp prkg; small acft tie down not avbl. De-ice svcs not avbl. TPA R/W 1200 ft, F/W Piston 1500 ft, F/W Turbine 2000 ft. Firing ranges S of fld for adzy ctc ATCT or ops. Range Control freq 38.30. Med evac pad for F/W at ops ramp, R/W evac pad at hospital, 15 min notice rqrd. 24 hr PPR for



tst—D317-353-7212/6514/C907-353-7212/6514. Twys A, B, C, D, E, F, G sections of N and S do not have shoulders. Rwy 07-25 seasonal climatic cond effects weight brg capacity. All hop day VMC only. Special VFR minimum Day—R/W 300-1/2, F/W 500-1. Night—R/W 500-1, F/W N/A. GCA 121.3, 118.05, 276.4 (Mon-Fri 1700-0100Z exc hol). PCN (Jun-Feb) 130/F/A/W/T. PCN (Mar-May) 112/F/D/W/T. US customs and intl trash not avbl. Rapid hot refueling points ops clsd Sat, Sun, hol; otr times by NOTAM. Avn units ctc their for cold fuel. Edge lgts Twy H and ptns of Twy N and S greater than 10 ft fm twy side stripes. CTN: Unlgt twrs in Alpha sod cntr inop. Rwy 07 actv railroad 556 ft fm DER runs thru clear zone perpendicular to cntrln; when railroad actv ATCT will advise Indg and dep NA. 15 ft road 387 ft E of DER 349 ft fm DER runs thru clear zone perpendicular to extdd cntrln; river 556 ft fm DER runs thru clear zone perpendicular to extdd cntrln. Rwy 25 15 ft road 349 ft W of DER; 23 ft railroad tracks 556 ft W of DER; 25 ft trees 556 ft W of DER. Road 387 ft fm DER runs thru clear zone perpendicular to extdd cntrln; river 477 ft fm DER runs thru clear zone perpendicular to extdd cntrln. Road ttc is ctd by ATCT when opn.

AIRPORT MANAGER: 907-353-7022

COMMUNICATIONS: CTAF 125.0 ATIS 134.25 907-353-5233 (TIE-IN FSS FAIRBANKS FAI-DL-NOTAM PAFB)

FAIRBANKS RADIO 122.2 (E) 122.6

FAIRBANKS APP CON 125.35 363.2 (180°-359°) 127.1 251.1 (360°-179°) (E)

TOWER 40.80 FM 125.0 (E) 284.6 Class D svc (1700-0800Z; Mon-Fri exc hols; otr times by NOTAM; otr times Class G)

GND CON 121.7 263.15

FAIRBANKS DEP CON 125.35 363.2 327.1

BASE OPS 139.3 (Mon-Fri 1700-0200Z)

PMSV METRO 142.1381.375

AIRSPACE: CLASS D svc 1700-0800Z; Mon-Fri exc hols; otr times by NOTAM; otr times CLASS G.

RADIO AIDS TO NAVIGATION: NOTAM FILE FAI.

FAIRBANKS (H) (H) VORTACW 108.6 FAI Chan 23 N64°48.00' W148°00.72' 056° 10.4 NM to fld. 1526/21E.

TACAN AZIMUTH unusable:

065°-100° byd 30 NM

270°-330° byd 10 NM blo 10,000'

270°-330° byd 30 NM

CHENA NDB (HW) 257 CUN N64°50.32' W147°29.70' 252° 3.1 NM to fld. 462/17E.

COMM/NAV/WEATHER REMARKS: ASOS 119.275 is assoc with R-2205 Yukon Training Range. ASOS freq 118.525 is assoc with R-2211 Blair Lake Training Range. Wx brief avbl 1600-0700Z; wkdays exc hols—D317-353-7111/9999. Otr time 17th OWS Joint Base Pearl Harbor—Hickam D315-449-8333/7950/C808-449-8333/7950. PMSV lmtd to line of sight; reception blw 5,000 ft MSL lmtd fm 210°-100° wi 100 NM by trrn, no lmt abv 5,000 ft wi 50 NM; reception 3,500-12,000 ft lmtd fm 100°-210° fm 50-100 NM by trrn, no lmt abv 12,000 ft wi 100 NM. PMSV Metro 142.1/381.375. Wx hrs Mon-Sat 0900Z-0900Z, exc hols—D317-353-7111/C907-353-7111; otr times by NOTAM. Metwatch and medevac emerg Aft hr—(907) 382-6518. PMSV unmonitored when FBK twr clsd. Sfc vis restricted fm 020°-050° due to Hangar 1 and fm 250°-350° due to ctl twr and bldgs. Durg wx station evac (907) 382-6518. Mins based on FBK wx obs.

HELIPAD H1: H50X50 (ASPH-CONC)

HELIPAD H4: H50X50 (ASPH-CONC)

HELIPAD H5: H50X50 (ASPH-CONC)

HELIPAD H6: H50X50 (ASPH-CONC)

HELIPAD H7: H50X50 (ASPH-CONC)

HELIPORT REMARKS: H1 designated: Helipad S.