

OPHIR (Z17) 0 NW UTC-9(-8DT) N63°08.76' W156°31.73'
595 NOTAM FILE ENA

MC GRATH

RWY 11-29: 1940X60 (GRVL-DIRT) 0.4% up E

RWY 11: Trees.

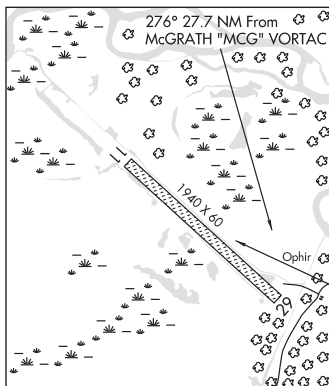
RWY 29: Trees.

AIRPORT REMARKS: Unattended. Rwy not maintained on a regular schedule; rcmd inspection prior to use. Windssock missing – west end. Sharp rocks 2 in X 6 in on rwy sfc. Ridges, ruts, & equip tracks on rwy sfc, 2 in X 4 in deep. Standing water on rwy sfc after rain. Safety areas on rwy edges very rough. West 500 ft of rwy under water due to flooding. Puddles, trees, & shrubs on rwy. First 300 ft of west end flooded.

AIRPORT MANAGER: 907-524-3241

COMMUNICATIONS: CTAF 122.9

COMM/NAV/WEATHER REMARKS: For a toll free call to Kenai FSS dial 1-866-864-1737.



ORCA BAY N60°28.79' W146°35.25' NOTAM FILE CDV.

ANCHORAGE

NDB (HW) 233 ALJ 070° 33.0 NM to Merle K (Mudhole) Smith. 31/11E.

L-1A, 3E, 4H

NDB unusable:

321°-341° byd 40NM blo 7,400'

OSCARVILLE N60°47.48' W161°52.37' NOTAM FILE BET.

MC GRATH

NDB (HW) 251 OSE 115° 1.3 NM to Bethel. 155/11E.

H-2B, 2I, L-3C

OZZINKIE (4K5) 3 NNE UTC-9(-8DT) N57°56.53' W152°27.90'

KODIAK

100 B NOTAM FILE ENA

L-2I, 3D

RWY 08-26: 3300X60 (GRVL) MIRL

RWY 08: Brush.

SERVICE: LGT ACTIVATE MIRL Rwy 08-26—CTAF.

AIRPORT REMARKS: Unattended. Rwy condition not monitored, recommend visual inspection prior to landing. Birds invof rwy.

AIRPORT MANAGER: 907-487-4952

COMMUNICATIONS: CTAF 122.8

RADIO AIDS TO NAVIGATION: NOTAM FILE ADQ.

KODIAK (H) VORW/DME 117.1 ODK Chan 118 N57°46.50'

W152°20.39' 324° 10.8 NM to fld. 133/14E.

VOR unusable:

190°-310° byd 15 NM blo 12,000'

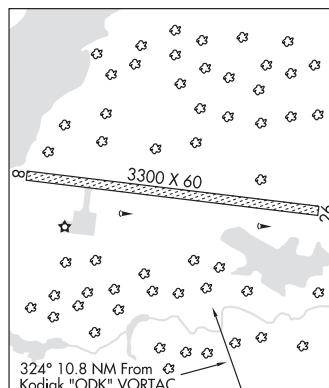
DME unusable:

154°-265° byd 15 NM blo 12,000'

266°-305°

306°-341° byd 15 NM blo 12,000'

COMM/NAV/WEATHER REMARKS: For a toll free call to Kenai FSS dial 1-866-864-1737



PALMER

ABI (AK46) PVT 2 N UTC-9(-8DT) N61°37.73' W149°02.59'
750 NOTAM FILE Not insp.

ANCHORAGE

RWY 07-25: 1000X40 (GRVL)

RWY 25: P-line.

AIRPORT REMARKS: Attended continuously. Rwy 25 has a road that crosses AER 730' from thld.

AIRPORT MANAGER: 907-745-3124

COMMUNICATIONS: CTAF 123.6

COMM/NAV/WEATHER REMARKS: For a local call to Palmer FSS dial 745-2495. For a toll free call to Kenai FSS dial 1-866-864-1737.