

**CINCINNATI MUNI/LUNKEN FLD** (LUK)(KLUK) 3 SE UTC-5(-4DT) N39°06.20' W84°25.12'

**CINCINNATI**  
H-10G, L-27E  
IAP, AD

483 B LRA Class IV, ARFF Index A NOTAM FILE LUK  
**RWY 03R-21L:** H6101X150 (ASPH-GRVD) S-60, D-70, 2S-88,  
 2D-140 PCN 42 R/C/X/T HIRL  
**RWY 03R:** REIL. PAPI(P4R)—GA 3.0° TCH 44'. RVR-R Tree.  
**RWY 21L:** MALSR. PAPI(P4L)—GA 3.0° TCH 39'. RVR-T Trees.  
**RWY 07-25:** H5127X100 (ASPH-GRVD) S-11, D-20, 2D-55  
 PCN 38 R/C/X/T MIRL  
**RWY 07:** Thld dspcd 439'. Tree.  
**RWY 25:** VASI(V4L)—GA 3.0° TCH 40'.  
**RWY 03L-21R:** H3801X100 (ASPH) S-11 PCN 6 F/C/Y/T MIRL  
**RWY 03L:** Trees.  
**RWY 21R:** VASI(V4L)—GA 4.0° TCH 46'. P-line.

**RUNWAY DECLARED DISTANCE INFORMATION**

**RWY 03R:**TORA-6101 TODA-6101 ASDA-6101 LDA-6101  
**RWY 21L:**TORA-6101 TODA-6101 ASDA-6101 LDA-6101

**SERVICE:** S4 FUEL 100LL, JET A+ OX 1 LGT When twr clsd ACTIVATE  
 or incr intst MALSR Rwy 21L, HIRL Rwy 03R-21L—CTAF. HIRL Rwy  
 03R-21L preset on med ints. Rwsy 03L-21R and Rwy 07-25 PCL  
 unavbl. Rwy 03R PAPI unusbl byd 7° left of cntrn. Rotating bcn located  
 1.7 NM E of arpt.

**NOISE:** Noise abatement procs in efcct call amgr. Acft maint runups rstrd btn  
 0200-1200Z†.

**AIRPORT REMARKS:** Attended continuously. Deer and birds on and invof arpt. Fuel A+ C513-871-2020. When twr closed use  
 CTAF. Clsd to scheduled ACR ops greater than 9 pax seats. 48 hr PPR for unsched ACR ops with gtr than 30 passenger  
 seats call amgr. Rwy 03L-21R clsd to unsked acr ops gtr than 30 pax seats. Rwy 07-25 clsd to unsked acr ops gtr than  
 30 pax seats. AER Rwy 25 and Rwy 21L are closely lctd. Verify correct rwy with compass hdg bfr dep. Arpt sfc cond  
 unmon dly 0400-1200Z†. Twy D, E, G, & H clsd to unsked acr ops gtr than 30 pax seats. Twy H not visible from twr,  
 contact ground control. Rwy 03L-21R cracks and surface variations. Ldg fee. Flight Notification Service (ADCUS)  
 available.

**AIRPORT MANAGER:** 513-352-6340

**WEATHER DATA SOURCES:** ASOS (513) 321-6291

**COMMUNICATIONS:** CTAF 118.7 ATIS 123.6 UNICOM 122.95

® APP/DEP CON 121.0

LUNKEN TOWER 118.7 (1200-0400Z†) GND CON/CLNC DEL 121.9 CLNC DEL 124.9 (when twr closed)

**AIRSPACE:** CLASS D svc 1200-0400Z†; other times CLASS E.

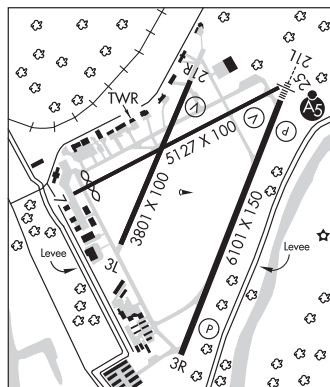
**VOR TEST FACILITY (VOT)** 108.4

**RADIO AIDS TO NAVIGATION:** NOTAM FILE CVG.

(L) (L) VORTACW 117.3 CVG Chan 120 N39°00.96' W84°42.20' 072° 14.3 NM to fld. 878/4W.

ILS/DME 110.9 I-LUK Chan 46 Rwy 21L. Class IA. Unmonitored when ATCT clsd. DME unusable byd 25° left of  
 course.

**COMM/NAV/WEATHER REMARKS:** Emerg frequency 121.5 not avbl at twr.



**CINCINNATI WEST** (See HARRISON on page 293)

**CINCINNATI/NORTHERN KENTUCKY INTL** (See COVINGTON on page 280)