

COSHOCTON

RICHARD DOWNING (I40) 3 N UTC-5(-4DT) N40°18.61' W81°51.15'

979 B NOTAM FILE CLE

RWY 04-22: H5001X75 (ASPH) S-30, D-35 MIRL

RWY 04: PAPI(P2L)—GA 3.5° TCH 26'.

RWY 22: REIL. PAPI(P4R)—GA 3.0° TCH 25'. Trees.

SERVICE: S4 FUEL 100LL, JET A+ LGT ACTIVATE REIL Rwy 22; MIRL Rwy 04-22—122.9. PAPI Rwy 04 & 22 opr continuously. PAPI Rwy 22, unusable byd 8° L of crs.

AIRPORT REMARKS: Attended 1400-2200Z. Deer, birds and otr wildlife on and invof arpt. For ser aft hrs see sign in FBO vestibule for ctc info. Fuel: 100LL & Jet A+ avbl full svc fm truck.

AIRPORT MANAGER: 740-622-2252

WEATHER DATA SOURCES: AWOS-3 118.875 (740) 295-7370.

COMMUNICATIONS: CTAF/UNICOM 123.0

Ⓡ INDIANAPOLIS CENTER APP/DEP CON 124.45

GCO 121.725 INDIANAPOLIS CENTER)

CLEARANCE DELIVERY PHONE: For CD if una via GCO ctc Indianapolis ARTCC at 317-247-2411.

RADIO AIDS TO NAVIGATION: NOTAM FILE ZZV.

ZANESVILLE (H) (DH) VORW/DME 114.95 ZZV Chan 96(Y) N39°56.45' W81°53.56' 011° 22.2 NM to fld.
898/6W.

DME unusable:

160°-170° byd 30 NM blo 3,500'

DETROIT
H-10G, L-29B
IAP

COURT HOUSE N39°36.05' W83°23.50' NOTAM FILE DAY.

NDB (MHW) 414 CSS 222° 2.3 NM to Fayette Co. 989/6W.

CINCINNATI
L-29A

COVINGTON

CINCINNATI/NORTHERN KENTUCKY INTL (CVG)(KCVG) 8 SW UTC-5(-4DT) N39°02.93'

W84°40.07'

896 B LRA ARFF Index—See Remarks NOTAM FILE CVG

RWY 09-27: H12001X150 (ASPH-CONC-GRVD) S-120, D-250,

2S-175, 2D-550, 2D/2D2-875 PCN 101R/B/W/T HIRL CL

RWY 09: MALSR. TDZL. PAPI(P4L)—GA 3.0° TCH 70'. RVR-TR 0.3% down.

RWY 27: MALSR. PAPI(P4L)—GA 3.0° TCH 67'. RVR-TR

RWY 18C-36C: H11000X150 (ASPH-CONC-GRVD) S-120, D-250,

2S-175, 2D-550, 2D/2D2-875 PCN 112F/C/W/T HIRL CL

RWY 18C: MALSR. TDZL. PAPI(P4R)—GA 3.0° TCH 71'. RVR-TMR

RWY 36C: ALSF2. TDZL. PAPI(P4L)—GA 3.0° TCH 77'. RVR-TMR 0.6% up.

RWY 18L-36R: H10000X150 (CONC-GRVD) S-120, D-250, 2S-175,

2D-550, 2D/2D2-875 PCN 127R/B/W/T HIRL CL

RWY 18L: MALSR. TDZL. PAPI(P4L)—GA 3.0° TCH 71'. RVR-TMR

RWY 36R: ALSF2. TDZL. PAPI(P4R)—GA 3.0° TCH 70'. RVR-TMR

RWY 18R-36L: H8000X150 (CONC-GRVD) S-120, D-250, 2D-550,

2D/2D2-875 PCN 170R/B/W/T HIRL CL

RWY 18R: ALSF2. TDZL. RVR-TMR

RWY 36L: ALSF2. TDZL. RVR-TMR

RUNWAY DECLARED DISTANCE INFORMATION

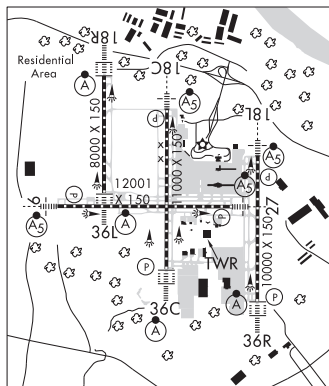
RWY 09: TORA-12000 TODA-12000 ASDA-11640 LDA-11640

RWY 27: TORA-12000 TODA-12000 ASDA-12000 LDA-12000

SERVICE: S4 FUEL 100LL, JET A

NOISE: Noise sens area N & S of arpt; rwy asgn 0300-1200Z based on noise abatement. Successive or simul dep fm Rwy 18L, 18C, 36L, 36C & 36R apvd with course dvrng bgn no further than 2 mi fm EOR due to noise abatement. NOTE: See Special Notices—NOISE ABATEMENT PROCEDURES Covington, KY, Cincinnati/Northern Kentucky Intl Airport (CVG).

AIRPORT REMARKS: Attended continuously. Birds on and invof the arpt. Opr Parrot with alt reporting mode and ADS-B enabled on arpt sfts. Twys rstrd to 15 mph or less with wingspan 214' or more. Rwy 09-27 W 4200' and E 750' conc; remainder asph overlay. Flight Notification Service (ADCUS) avbl. Class I, ARFF Index C. ARFF Index D/E avbl upon req. Rwy 18R-36L clsd to air carrier acft wigspsn more than 140 ft.



CINCINNATI
H-10G, L-26F, 27E
IAP, AD

CONTINUED ON NEXT PAGE

CONTINUED FROM PRECEDING PAGE

AIRPORT MANAGER: 859-767-3151

WEATHER DATA SOURCES: ASOS 134.375 (859) 767-8210. TDWR.

COMMUNICATIONS: D-ATIS ARR 134.375 D-ATIS DEP 135.3 UNICOM 122.95

Ⓡ APP CON 119.7 (090°-269°) 123.875 (270°-089°)

TOWER 118.3 (Rwy 09-27 and Rwy 18C-36C) 118.975 (Rwy 18L-36R) 133.325 (Rwy 18R-36L)

GND CON 121.7 CLNC DEL 127.175

Ⓡ DEP CON 128.7 (181°-360°) 126.65 (001°-180°)

RAMP CTL 130.90 (Ramp 1N / 1S Txl & Ramp 2N / 2S Txl) 130.375 (Ramp 3 Txl & N Txl) 129.475 (DHL Ramp)

130.5 (AMZ Ramp Ctl)

CPDLC (LOGON KUSA)

PDC

AIRSPACE: CLASS B See VFR Terminal Area Chart.

RADIO AIDS TO NAVIGATION: NOTAM FILE CVG.

(L) (L) VORTACW 117.3 CVG Chan 120 N39°00.96' W84°42.20' 044° 2.6 NM to fld. 878/4W.

ILS/DME 111.9 I-URN Chan 56 Rwy 09. Class ID.

ILS/DME 111.55 I-SIC Chan 52(Y) Rwy 18C. Class IIE.

ILS/DME 110.15 I-CIZ Chan 38(Y) Rwy 18L. Class IA. LOC unusable byd 25° left of course.

ILS/DME 110.75 I-CJN Chan 44(Y) Rwy 18R. Class IIE.

ILS 108.7 I-JDP Rwy 27. Class IIE. LOC unusable byd 20° right of course.

ILS/DME 109.9 I-CVG Chan 36 Rwy 36C. Class IIIE.

ILS/DME 110.75 I-VAC Chan 44(Y) Rwy 36L. Class IIE.

ILS/DME 110.35 I-EEI Chan 40(Y) Rwy 36R. Class IIIE.

CUBLA N39°21.21' W83°52.55' NOTAM FILE ILN.
 NDB (LOMw) 299 HW 048° 5.9 NM to Wilmington Air Park. 996/7W.

CINCINNATI

L-27E

CUYAHOGA CO (See CLEVELAND on page 274)

DAHIO TROTWOOD (See DAYTON on page 281)

DARKE CO (See VERSAILLES on page 323)

DAYTON

DAHIO TROTWOOD (I44) 7 W UTC-5(-4DT) N39°45.91' W84°20.58'

CINCINNATI

925 NOTAM FILE DAY

RWY 04-22: H2900X52 (ASPH)

RWY 04: Crops.

RWY 22: Trees.

AIRPORT REMARKS: Unattended. Ultralights and pwrld prchts on and invof arpt. Rwy 04-22 numerous cracks in pavement with 3' vegetation. 8' crops along entire length Rwy 04-22, 10' from rwy edge, both sides. Mowed path from Rwy 04 end to hngr area not suitable for acft. Twy from midfield to hgr area, 35' clnc between 8' crops. Wind indicator: LDI tetrahedron (tet) OTS/unrel.

AIRPORT MANAGER: 937-604-2619

COMMUNICATIONS: CTAF/UNICOM 122.8

Ⓡ COLUMBUS APP/DEP CON 118.85

CLEARANCE DELIVERY PHONE: For CD ctc Columbus Apch at 614-338-8537.

COMM/NAV/WEATHER REMARKS: Columbus APCH CTL TEL# 614-338-8537

DAYTON TRANSPORTATION CENTER HELIPORT (5D7) 0 N UTC-5(-4DT) N39°45.45' W84°11.30' CINCINNATI

800 B NOTAM FILE DAY

HELIPAD H1: H40X40 (CONC) S-4.5 PERIMETER LGTS

SERVICE: LGT Actvt perimeter lgts and rotating bcn-CTAF.

HELIPORT REMARKS: Unattended. Rooftop: 40' x 40' concrete pad within 80' x 60' landing/takeoff area. Maximum landing weight 4500 lbs. Ingress/egrees 005-175. Rwy H1 mkg faded and incom.

AIRPORT MANAGER: 937-454-8299

COMMUNICATIONS: CTAF 122.9

CLEARANCE DELIVERY PHONE: For CD ctc Columbus Apch at 614-338-8537.