

**BENTON****LLOYD STEARMAN FLD** (1K1) 1 SW UTC-6(-5DT) N37°46.47' W97°06.79'**WICHITA**  
H-5C, L-101, 15D  
IAP

1364 B NOTAM FILE ICT

**RWY 17-35:** H5106X75 (ASPH) HIRL 0.3% up N**RWY 17:** PAPI(P2L)—GA 3.0° TCH 33'. Thld dspcd 242'. Trees. Rgt tfc.**RWY 35:** PAPI(P2L)—GA 3.0° TCH 32'. Trees.**SERVICE:** S4 **FUEL** 100LL, JET A **OX** 1, 2, 3, 4 **LGT** ACTVT PAPI Rwws 17 and 35; HIRL Rwy 17-35—CTAF.**AIRPORT REMARKS:** Attended 1300-0500Z†. Fuel 24 hr credit card, for Jet A call arpt manager 316-648-0132. Warbird, antique and helicopter ops on and in/ov arpt. Uncontrolled vehicle traffic in/ov hangars and on twys. 70' wide concrete twy turn off added midfield. Acft back taxi on rwy when able. Twin and larger acft back taxi on rwy. Ultralight acft PPR. For assistance after hrs call 316-648-0132 or numbers posted at FBO.

Turf operations west of runway.

**AIRPORT MANAGER:** 316-648-0132**WEATHER DATA SOURCES:** AWOS-2 118.3 (316) 530-6004.**COMMUNICATIONS:** CTAF/UNICOM 123.075® **WICHITA APP/DEP CON** 134.8**CLNC DEL** 125.0**CLEARANCE DELIVERY PHONE:** For CD ctc Wichita Apch at 316-350-1520.**RADIO AIDS TO NAVIGATION:** NOTAM FILE ICT.**WICHITA (H) (H) VORTACW** 113.8 ICT Chan 85 N37°44.72'

W97°35.03' 078° 22.5 NM to fld. 1472/7E.

TACAN AZIMUTH unusable:

025°-035° blo 4,000'

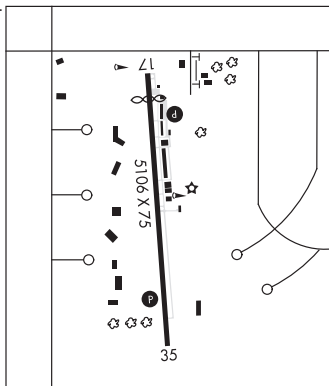
040°-055° byd 20 NM

147°-159° blo 4,900'

VOR unusable:

025°-035° blo 4,000'

147°-159° blo 4,400'

**BILOY** N39°07.22' W95°41.23' NOTAM FILE TOP.**KANSAS CITY**  
L-101**NDB (MHW/LOM)** 521 TO 131° 4.3 NM to Philip Billard Muni. 921/5E. NDB unmonitored.**BIRD CITY****BRESSLER FLD** (5KØ) 1 SW UTC-6(-5DT) N39°44.65' W101°33.39'**WICHITA**

3489 B NOTAM FILE ICT

**RWY 08-26:** 3460X70 (TURF)**RWY 08:** Road. Rgt tfc.**RWY 26:** Road.**RWY 17-35:** 2270X75 (TURF)**RWY 17:** Road.**RWY 35:** Road.**SERVICE:** **LGT** Rotating bcn OTS indef.**AIRPORT REMARKS:** Attended Apr-Sep dalgt hours, Oct-Mar unattended. During Oct-Mar call 785-734-2631 for arpt conditions. East of Rwy 08-26 has one third rough sfc.**AIRPORT MANAGER:** 785-734-2631**COMMUNICATIONS:** CTAF 122.9**CLEARANCE DELIVERY PHONE:** For CD ctc Denver ARTCC at 303-651-4257.**BLOSSER MUNI** (See CONCORDIA on page 94)**BRESSLER FLD** (See BIRD CITY on page 90)**BUCKLIN** (8KØ) 1 SW UTC-6(-5DT) N37°32.74' W99°38.53'**WICHITA**

2418 NOTAM FILE ICT

**RWY 18-36:** 2560X150 (TURF) 0.6% up N**RWY 18:** Pole.**RWY 36:** Road.**AIRPORT REMARKS:** Unattended.**AIRPORT MANAGER:** 620-826-5519**COMMUNICATIONS:** CTAF 122.9**CLEARANCE DELIVERY PHONE:** For CD ctc Kansas City ARTCC at 913-254-8508.