

UPOLU (UPP)(PHUP) 3 NW UTC-10 N20°15.91' W155°51.60'
96 B TPA—See Remarks NOTAM FILE UPP
RWY 07-25: H3800X75 (ASPH) S-30, 2S-156 MIRL

HAWAIIAN ISLANDS
P-2G

0.3% up W

RWY 25: Hill. Rgt tfc.

SERVICE: LGT ACTVT MIRL Rwy 07-25—CTAF.

AIRPORT REMARKS: Unattended. No facilities. PPR for transient parking. PPR from arpt manager phone (808) 327-9520 for transportation of Division 1.1, 1.2, 1.3 explosives in or out of arpt. Occasional flocks of birds on and in/ov arpt. Skydiving activity on and in/ov arpt. All helicopters confine ops to paved areas only. TPA—small acft 800(704), large acft 1500(1404). NOTE: See Area Notices—TRAFFIC

ADVISORIES AT NON-TOWER AIRPORTS.

AIRPORT MANAGER: (808) 327-9520

COMMUNICATIONS: CTAF 122.9

UPOLU POINT RCO 122.1R 112.3T (HONOLULU RADIO)

CLEARANCE DELIVERY PHONE: For CD ctc Honolulu Control Facility at 808-840-6262.

RADIO AIDS TO NAVIGATION: NOTAM FILE UPP.

UPOLU POINT (H) VORTAC 112.3 UPP Chan 70 N20°12.03'
W155°50.60' 335° 4.0 NM to fld. 1760/11E.

VOR unusable:

022°-040° blo 5,000'

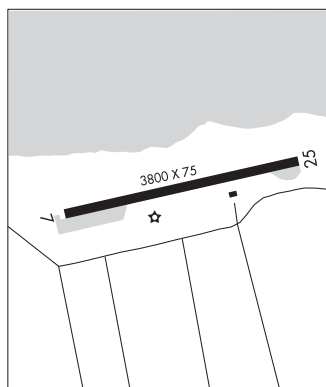
123°-130°

203°-292° byd 30 NM blo 8,000'

VORTAC unusable:

145°-160° byd 27 NM blo 19,000'

168°-180° byd 25 NM blo 10,000'



UPOLU POINT N20°12.03' W155°50.60' NOTAM FILE UPP.
(H) VORTAC 112.3 UPP Chan 70 335° 4.0 NM to fld. 1760/11E.

HAWAIIAN-MARIANA
P-2G

VOR unusable:

022°-040° blo 5,000'

123°-130°

203°-292° byd 30 NM blo 8,000'

VORTAC unusable:

145°-160° byd 27 NM blo 19,000'

168°-180° byd 25 NM blo 10,000'

RCO 122.1R 113.3T (HONOLULU RADIO)