

**MONROE RGNL** (MLU)(KMLU) 3 E UTC-6(-5DT) N32°30.63' W92°02.17'

79 B Class I, ARFF Index B NOTAM FILE MLU

**RWY 04-22:** H7504X150 (ASPH-GRVD) S-75, D-170, 2S-175,  
2D-290 PCN 111F/D/X/T HIRL

**RWY 04:** MALSR. PAPI(P4L)—GA 3.0° TCH 50'. RVR-T

**RWY 22:** MALSR. PAPI(P4L)—GA 3.0° TCH 50'. RVR-R

**RWY 14-32:** H6301X150 (ASPH) S-75, D-170, 2S-175, 2D-290  
PCN 32 R/C/X/T MIRL

**RWY 14:** REIL. PAPI(P4L)—GA 3.0° TCH 50'.

**RWY 32:** REIL. PAPI(P4L)—GA 3.0° TCH 53'.

**RUNWAY DECLARED DISTANCE INFORMATION**

**RWY 04:** TORA-7504 TODA-7504 ASDA-7504 LDA-7504

**RWY 14:** TORA-6301 TODA-6301 ASDA-6301 LDA-6301

**RWY 22:** TORA-7504 TODA-7504 ASDA-7504 LDA-7504

**RWY 32:** TORA-6301 TODA-6301 ASDA-6301 LDA-6301

**SERVICE:** S4 FUEL 100LL, JET A OX1 LGT When ATCT clsd actvt  
MALSR Rwy 04 and 22; HIRL Rwy 04-22; MIRL Rwy 14-32; Twy  
lghts—CTAF. PAPI Rwy 04, 22, 14 and 32 opr consly.

**AIRPORT REMARKS:** Attended continuously. Bird activity on and invof arpt.  
Twy 5 and E east of Rwy 04-22 not avbl for air carrier ops with over  
9 passenger seats. SW 6000' grvd ASPH. Taxiway E east of Rwy  
04-22 restricted to acft with wingspan under 90 ft. Twy C turnaround  
btn apch end Rwy 22 and Twy C1 clsd to acft wingspan more than 49 ft. Twy C2 clsd.

**AIRPORT MANAGER:** 318-329-2460

**WEATHER DATA SOURCES:** ASOS (318) 327-5675 LLWAS.

**COMMUNICATIONS:** CTAF 118.9 ATIS 125.05 UNICOM 122.95

RCO 122.4 (DE RIDDER RADIO)

Ⓡ APP/DEP CON 118.15 (Within 20 NM blw 4000') 126.9 (1200-0400Z‡)

Ⓡ FORT WORTH CENTER APP/DEP CON 126.325 (0400-1200Z‡)

TOWER 118.9 (1200-0400Z‡) GND CON 121.9 CLNC DEL 121.65

**CLEARANCE DELIVERY PHONE:** For CD when ATCT is clsd ctc Fort Worth ARTCC at 817-858-7584

**AIRSPACE:** CLASS D svc 1200-0400Z‡; other times CLASS E.

TRSA svc ctc APP CON within 25 NM below 7000

**RADIO AIDS TO NAVIGATION:** NOTAM FILE MLU.

(VL) (L) VORTACW 117.2 MLU Chan 119 N32°31.01' W92°02.16' at fld. 77/3E.

VOR unusable:

010°-040° byd 40 NM

125°-135° byd 40 NM

215°-231° byd 40 NM

232°-242° byd 40 NM blo 8,000'

232°-242° byd 83 NM

243°-255° byd 40 NM blo 7,000'

243°-255° byd 56 NM

256°-267° byd 40 NM blo 18,000'

256°-267° byd 45 NM

268°-271° byd 40 NM

272°-282° byd 40 NM blo 2,000'

272°-282° byd 51 NM

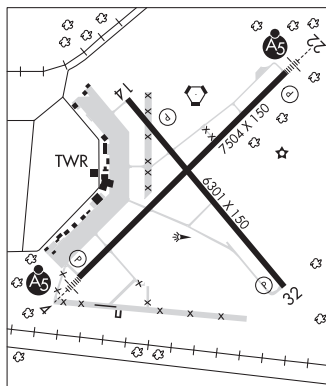
283°-315° byd 40 NM

**SABAR NDB (LOMW)** 392 ML N32°27.24' W92°06.26' 043° 4.8 NM to fld. 75/3E.

ILS 109.5 I-MLU Rwy 04. Class IB. LOM SABAR NDB. ILS and LOM unmonitored when ATCT clsd.

ILS 109.5 I-MZR Rwy 22. Class IT. Unmonitored when ATCT clsd. LOC unusable byd 20° right of course.

ASR (1200-0400Z‡)



**MEMPHIS**  
H-6J, L-18F  
IAP, AD

**MOREHOUSE MEML** (See BASTROP on page 90)

**MOSSY** N30°18.40' W93°11.77' NOTAM FILE CWF.

**NDB (LOMW)** 418 CW 154° 6.4 NM to Chennault Intl. 23/OE.

**HOUSTON**