

TUNICA MUNI (UTA)(KUTA) 1 E UTC-6(-5DT) N34°41.10' W90°20.87'

194 B NOTAM FILE UTA MON Airport

RWY 17-35: H8500X150 (ASPH-GRVD) S-94, D-215, 2D-510,
2D-460, 2D/2D2-720 PCN 45 F/B/X/U HIRL

RWY 17: PAPI(P4L)—GA 3.0° TCH 50'

RWY 35: MALSR. PAPI(P4L)—GA 3.0° TCH 47'. Rgt tfc.

SERVICE: S4 FUEL 100LL, JET A OX 1, 3 LGT Actvt MALSR Rwy 35;
HIRL Rwy 17-35—CTAF.

AIRPORT REMARKS: Attended 1200-0300Z†. Large flocks of geese invof
arpt Nov-Feb. Agricultural acft activity invof the arpt during daylight
hours all days. Aft hrs fuel ctc AMGR 662-357-7330. 24 hr PPR
coml flgts over 30 seats. Call AMGR 662-357-7320. Clsd to sked
acr ops with more than 9 pax seats and unsked acr ops with more
than 30 pax seats. Rwy 35 designated calm wind rwy.

AIRPORT MANAGER: 662-357-7320

WEATHER DATA SOURCES: AWOS-3 118.075 (662) 363-1652.

COMMUNICATIONS: CTAF/UNICOM 123.0

Ⓜ **MEMPHIS APP/DEP CON** 119.1

CLNC DEL 118.9

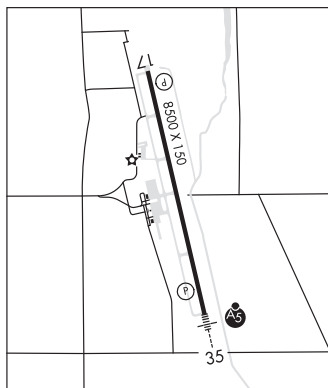
CLEARANCE DELIVERY PHONE: For CD ctc Memphis Apch at 901-842-8457.

RADIO AIDS TO NAVIGATION: NOTAM FILE MEM.

MEMPHIS (H) (H) VORTAC 117.5 MEM Chan 122 N35°00.91'

W89°58.99' 221° 26.7 NM to fld. 363/1E.

ILS/DME 110.95 I-UTA Chan 46(Y) Rwy 35. Class 1E.



MEMPHIS
H-6J, L-18G
IAP

TUNNG N34°23.11' W89°37.56' NOTAM FILE GWO.

NDB (LOWW) 426 UV 092° 4.4 NM to University-Oxford. 410/1W. LOC & NDB unmonitored 2300-1400Z†.

MEMPHIS
L-18G

TUPELO RGNL (TUP)(KTUP) P (ARNG) 3 W UTC-6(-5DT) N34°16.14' W88°46.19'

347 B Class I, ARFF Index A NOTAM FILE TUP

RWY 18-36: H7150X150 (ASPH-GRVD) S-69, D-91, 2D-168
PCN 72 F/C/W/T HIRL

RWY 18: REIL. PAPI(P4R)—GA 3.0° TCH 45'

RWY 36: MALSR.

SERVICE: S4 FUEL 100LL, JET A, A+, A1+ OX 3, 4 LGT ACTIVATE
MALSR Rwy 36; REIL Rwy 18; HIRL Rwy 18-36—CTAF. PAPI Rwy
18 opr continuously.

MILITARY—FUEL A+ (avbl 1200-0400Z†, C931-492-2160. OT
C931-492-2160, \$50 fee, 30 min PN.) (NC-100LL, A1+)

AIRPORT REMARKS: Attended 1200-0400Z†. A+ fuel svc avbl 24 hrs
with credit card. Hel ops all hrs 700 ft AGL E of rwy 18/36—ctc CTAF
for adzy. Acr ramp rstrd to acr ops exp with PPR Call amgr Mon-Fri
1400-2300Z†; 662-841-6570. PPR for unsked acr ops with more
than 30 pax seats call amgr 662-841-6570. Index B ARFF eqpt
avbl only during sked acr ops.

MILITARY REMARKS: CAUTION Hel ops all hrs 700 ft AGL E of Rwy
18-36—ctc CTAF for adzy. ARNG Support fac opr Mon-Fri
1300-2200Z† exc hol. Ltd prk avbl. No tsnt fuel avbl. DSN
293-3438, C662-891-4438.

AIRPORT MANAGER: 662-841-6570

WEATHER DATA SOURCES: ASOS 133.525 (662) 840-8528.

COMMUNICATIONS: CTAF 118.775

TUPELO RCO 122.5 (GREENWOOD RADIO)

Ⓜ **MEMPHIS CENTER APP/DEP CON** 128.5

TOWER 118.775 (1200-0400Z†) **GND CON** 121.825

AIRSPACE: CLASS D svc 1200-0400Z†; other times CLASS E.

RADIO AIDS TO NAVIGATION: NOTAM FILE TUP.

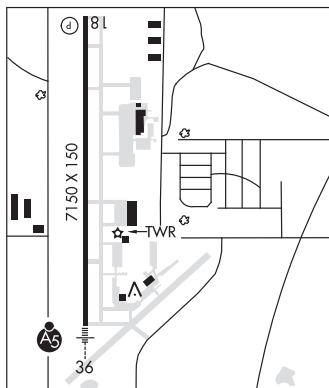
(L) (L) **VORW/DME** 109.8 OTB Chan 35 N34°13.43' W88°47.84' 023° 3.0 NM to fld. 364/4E.

VOR portion unusable:

190°-220°

VERON NDB (LOWW) 420 TU N34°10.82' W88°46.12' 001° 5.3 NM to fld. 325/2W.

ILS/DME 108.5 I-TUP Chan 22 Rwy 36. Class IA. LOM VERON NDB. Unmonitored 0500-1100Z†. LOC front
course unusable beyond 025° right of course



MEMPHIS
H-6J, L-18G
IAP, DIAP, AD