

**DENISON** N33°49.59' W96°40.13' NOTAM FILE GYI.  
NDB (MHW) 341 DNI 176° 6.7 NM to North Texas Rgnl/Perrin Fld. 642/6E.

**DALLAS—FT. WORTH**  
L-17C

**DENTON ENTERPRISE** (DTO)(KDTO) 3 W UTC-6(-5DT) N33°12.12' W97°11.95'  
643 B TPA-1443(800) NOTAM FILE DTO

**DALLAS—FT WORTH**  
COPTER  
H-6H, L-17C, A  
IAP, AD

**RWY 18L-36R:** H7002X150 (ASPH) S-70, D-100 MIRL  
**RWY 18L:** MALSR. PAPI(P4L)—GA 3.0° TCH 50'.  
**RWY 36R:** PAPI(P4L)—GA 3.0° TCH 50'. Thld dsplcd 100'. Trees.  
**RWY 18R-36L:** H5003X75 (ASPH) S-30 MIRL 0.3% up N  
**RWY 18R:** PAPI(P4L)—GA 3.0° TCH 42'.  
**RWY 36L:** PAPI(P4L)—GA 3.0° TCH 42'.

**RUNWAY DECLARED DISTANCE INFORMATION**

**RWY 18L:**TORA-7002 TODA-7002 ASDA-6502 LDA-6502  
**RWY 36R:**TORA-7002 TODA-7002 ASDA-6602 LDA-6502

**SERVICE:** S4 FUEL 100LL, JET A LGT Dusk-dawn when ATCT clsd,  
MIRL Rwy 18L-36R and 18R-38L preset to low intst; to incr intst  
and ACTVT MALSR Rwy 18—CTAF.

**AIRPORT REMARKS:** Attended 1200-0400Z†. Arpt closed to ultralights and  
gliders. Mowing opns on arpt May-Sept. Rwy 18L designated as a  
calm wind rwy.

**AIRPORT MANAGER:** 940-349-7736

**WEATHER DATA SOURCES:** ASOS 119.325 (940) 383-8457.

**COMMUNICATIONS:** CTAF 119.95 ATIS 119.325 UNICOM 122.95

Ⓡ REGIONAL APP/DEP CON 118.1

TOWER 119.95 (1200-0400Z†) GND CON 123.95 CLNC DEL 123.95

**CLEARANCE DELIVERY PHONE:** For CD when ATCT is clsd ctc Regional Apch  
at 972-615-2799.

**AIRSPACE:** CLASS D svc 1200-0400Z†; other times CLASS G.

**RADIO AIDS TO NAVIGATION:** NOTAM FILE FTW.

**RANGER (VH) (H) VORTACW** 115.7 FUZ Chan 104 N32°53.37' W97°10.77' 351° 18.7 NM to fld. 639/6E.

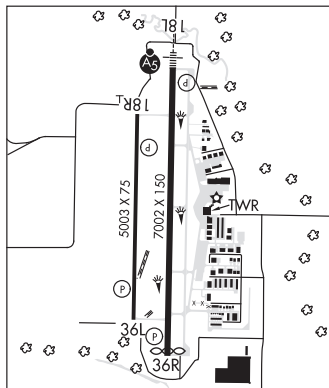
VOR unusable:

275°-290° byd 40 NM

317°-327° byd 40 NM

**PINCK NDB (LOMW)** 257 DT N33°16.99' W97°11.78' 178° 4.9 NM to fld. 739/4E. NOTAM FILE DTO.

ILS 109.1 I-DTO Rwy 18L. Class IT. LOM PINCK NDB. LOC unusable byd 10° left of course.



**DENVER CITY** (E57) 1 NW UTC-6(-5DT) N32°58.48' W102°50.71'  
3575 B NOTAM FILE FTW

**ALBUQUERQUE**  
H-6G, L-6H

**RWY 04-22:** H5780X50 (ASPH) S-13 MIRL  
**RWY 04:** PAPI(P2L)—GA 4.5° TCH 64'. Thld dsplcd 350'. Road.  
**RWY 22:** PAPI(P2L)—GA 4.0° TCH 43'. Thld dsplcd 155'. P-line. Rgt  
tfc.

**RWY 08-26:** H3960X45 (ASPH) S-13

**RWY 08:** Thld dsplcd 179'. P-line.

**RWY 26:** Thld dsplcd 526'. P-line. Rgt tfc.

**SERVICE:** FUEL 100LL, JET A

**AIRPORT REMARKS:** Attended irregularly. Fuel 100LL self-serve. Lgtd drilling  
rigs on and invof arpt. Rwy 26, entrance road and 20' hangars inside  
prim sfc.

**AIRPORT MANAGER:** 806-592-5426

**WEATHER DATA SOURCES:** AWOS-3PT 118.275 (806) 592-3681.

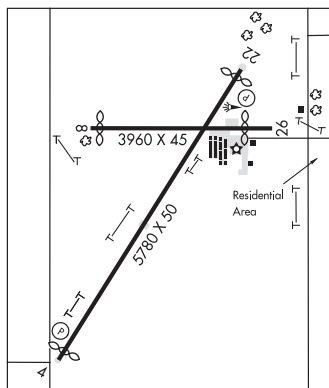
**COMMUNICATIONS:** CTAF/UNICOM 122.8

**CLEARANCE DELIVERY PHONE:** For CD ctc Fort Worth ARTCC at  
817-858-7584.

**RADIO AIDS TO NAVIGATION:** NOTAM FILE HOB.

**HOBBS (L) (L) VORTACW** 111.0 HOB Chan 47 N32°38.29'

W103°16.16' 036° 29.4 NM to fld. 3664/11E.



**DEPOO** N25°59.02' W97°30.55' NOTAM FILE BRO.  
NDB (LOMW) 393 BR 133° 6.5 NM to Brownsville/South Padre Island Intl. 29/3E.

**BROWNSVILLE**