

GEORGE BUSH INTCNL/HOUSTON (IAH)(KIAH) 15 N UTC-6(-5DT) N29°59.07'

W95°20.49'

96 B LRA Class I, ARFF Index E NOTAM FILE IAH

RWY 15L-33R: H12001X150 (CONC-GRVD) S-100, D-200, 2S-175, 2D-400, 2D/2D2-800 PCN 72 R/A/W/T HIRL CL

RWY 15L: PAPI(P4R)—GA 3.0° TCH 58'. RVR-TMR

RWY 33R: MALSR. RVR-TMR

RWY 09-27: H10000X150 (CONC-GRVD) D-210, 2S-175, 2D-560 PCN 67 R/A/W/T HIRL CL

RWY 09: MALSR. PAPI(P4R)—GA 3.0° TCH 71'. RVR-TMR

RWY 27: ALSF2. TDZL. PAPI(P4L)—GA 3.0° TCH 70'. RVR-TMR

RWY 15R-33L: H10000X150 (CONC-GRVD) S-75, D-200, 2S-175, 2D-400, 2D/2D2-873 PCN 94 R/B/W/T HIRL CL

RWY 15R: MALSR. TDZL. PAPI(P4L)—GA 3.0° TCH 71'. RVR-TMR

RWY 33L: TDZL. PAPI(P4R)—GA 3.0° TCH 59'. RVR-TMR

RWY 08R-26L: H9402X150 (CONC-GRVD) S-75, D-210, 2S-175, 2D-498, 2D/2D2-873 PCN 72 R/A/W/T HIRL CL

RWY 08R: MALSR. TDZL. PAPI(P4L)—GA 3.0° TCH 72'. RVR-TMR

RWY 26L: ALSF2. TDZL. PAPI(P4R)—GA 3.0° TCH 71'. RVR-TMR

RWY 08L-26R: H9000X150 (CONC-GRVD) S-75, D-210, 2S-175, 2D-409, 2D/2D2-873 PCN 72 R/A/W/T HIRL CL

RWY 08L: ALSF2. TDZL. RVR-TMR

RWY 26R: ALSF2. TDZL. RVR-TMR

LAND AND HOLD—SHORT OPERATIONS

LDG RWY	HOLD—SHORT POINT	AVBL LDG DIST
RWY 08R	TWY NP	9019
RWY 26L	TWY NE	9010

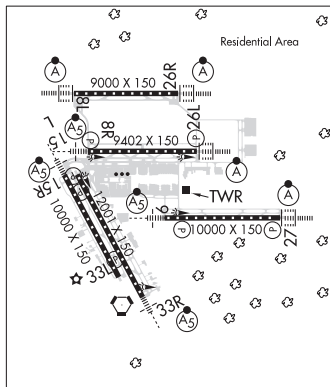
RUNWAY DECLARED DISTANCE INFORMATION

RWY 08L: TORA-9000 TODA-9000 ASDA-9000 LDA-9000
RWY 08R: TORA-9402 TODA-9402 ASDA-9402 LDA-9402
RWY 09: TORA-10000 TODA-10000 ASDA-10000 LDA-10000
RWY 15L: TORA-12001 TODA-12001 ASDA-12001 LDA-12001
RWY 15R: TORA-10000 TODA-10000 ASDA-10000 LDA-10000
RWY 26L: TORA-9402 TODA-9402 ASDA-9402 LDA-9402
RWY 26R: TORA-9000 TODA-9000 ASDA-9000 LDA-9000
RWY 27: TORA-10000 TODA-10000 ASDA-10000 LDA-10000
RWY 33L: TORA-10000 TODA-10000 ASDA-10000 LDA-10000
RWY 33R: TORA-12001 TODA-12001 ASDA-12001 LDA-12001

SERVICE: S4 FUEL 100LL, JET A OX2

NOISE: Noise sensitive area north, east and west of arpt.

AIRPORT REMARKS: Attended continuously. Birds on and in/ov arpt. Wildlife haz bats in/ov IAH. Rwy 09-27 clsd to acft with wingspan 215' and above. ASDE-X in use. Opr transponders with altitude reporting mode and ADS-B (if equipped) enabled on all airport surfaces. Acft equipped with dual antennas should use top antenna. GBAS apch svc vol 20 NM fr thld, all GLS apchs. Rwy status lgts are in opn. Rwy 15L-33R magnetic anomalies may affect compass hdg for tkof. North ramp north and south taxilanes clsd to acft with wing spans greater than 125'. Taxilane RC clsd to acft with wingspan greater than 135'. Twy NR clsd to acft with wing spans greater than 125' between Twy WD and Twy WB. Twy NR btn Twy NC and Twy WW clsd to acft wingspan more than 214. Twy SF btn Rwy 09-27 up to and including the east bridge clsd to acft with wingspan 215' and over. Twy WW run-up pad for Rwy 15L clsd acft with wingspan 135' and over. Twy WW btn Twy NR and Twy WB clsd to acft wingspan more than 214'. Pilots and crews should be aware of dep turns on crs in excess of 180°. Pilot readback of direction of turns is highly encouraged. The flwg mov areas are not vsb fm the ATCT: portions of Twys WA and WB fm Twy WH to the AER 33R; Twys WA and WB fm Twy WD north for 400'; Twy WD fm Twy WA to Twy NR; Twy NR; Twy WL fm Rwy 15L to Twy WB and Twy WM. Taxilane RA, RB, RC, R2, and Twy SC north of Twy SB are designated non-movement areas operated by UAL ramp ctl. Twy SF btn Twy NB and Txl RA is dsngd non-mov area. Dual twy ops Twy NK btn Twy NB and North Ramp, west cntrln rstd to acft max wing spans 125' and east cntrln max wing spans 214'. Twy NR btn Twy WW and WB is designated non-movement area. Twy NK btn Twy NB and terminal D ramp simultaneous acft ops prohibited when middle taxilane in use. Twy WC west of Rwy 15R-33L rstd to acft with 118' wingspan and blw. Twy WA and Twy WB magnetic anomalies may affect compass hdg. Twy NA lgt all between Twy WP and Twy NP not standard. 9' AGL unmarked security fence adjacent to FBO and corporate base operator ramps and non-movement area taxilanes. Ldg fee. Flight Notification Service (ADCUS) available. Apron terminal alpha north ramp north-south txl clsd to acft wingspan more 125 ft. Apron terminal alpha north ramp spot 5 clsd to acft wingspan more than 118 ft. Apron terminal alpha north ramp east-west txl clsd to acft wingspan more than 118 ft. Apron terminal alpha north ramp spot 6 clsd to acft wingspan more than 125 ft. Twy WD btn Twy NR and Twy WB clsd to acft wingspan more than 171'. Twy NJ btn Twy NB and Terminal C Ramp simultaneous acft ops prohibited when middle taxilane in use, middle taxilane clsd to acft wingspan more than 214'. Dual twy opns Twy NJ btn Twy NB and Terminal C ramp; west cntrln rstd to acft max wing spans 118' and east cntrln max wing spans 118'.



HOUSTON

COPTER

H-7C, L-19E, 21A, GOMW

IAP, AD

CONTINUED ON NEXT PAGE

SC, 21 MAR 2024 to 16 MAY 2024

CONTINUED FROM PRECEDING PAGE

AIRPORT MANAGER: 281-233-1131

WEATHER DATA SOURCES: ASOS (281) 443-6397 TDWR.

COMMUNICATIONS: D-ATIS 124.05 (281-209-8665) UNICOM 122.95

HOUSTON RCO 122.4 (MONTGOMERY COUNTY RADIO)

Ⓡ HOUSTON APP CON 124.35 (West) 120.05 (East)

Ⓡ HOUSTON DEP CON 123.8 (West) 119.7 (North) 127.125

TOWER 135.15 (Rwy 09 and Rwy 27) 127.3 (Rwy 15R-33L and Rwy 15L-33R) 125.35 (Rwy 08R and Rwy 26L) 120.725 (Rwy 08L and Rwy 26R) GND CON 121.7 (Rwy 15L-33R, and Rwy 15R-33L) 118.575 (Rwy 08L-26R, Rwy 08R-26L and Rwy 09-27)

GND METERING 119.95 CLNC DEL 128.1

CPDLC (LOGON KUSA)

PDC

AIRSPACE: CLASS B See VFR Terminal Area Chart.

RADIO AIDS TO NAVIGATION: NOTAM FILE IAH.

HUMBLE (H) (H) VORTACW 116.6 IAH Chan 113 N29°57.42' W95°20.74' 003° 1.7 NM to fld. 81/5E.

VORTAC monitored by ATCT

VOR portion unusable:

060°-070° byd 35 NM

175°-185° byd 20 NM blo 3,000'

Byd 30 NM blo 2,000'

DME unusable:

015°-090° byd 30 NM blo 2,000'

130°-320° byd 30 NM blo 2,000'

175°-185° byd 20 NM blo 3,000'

230°-250°

TACAN AZIMUTH unusable:

040°-055° blo 5,000'

150°-320° blo 4,500'

150°-320° byd 10 NM

ILS/DME 111.55 I-BZU Chan 52(Y) Rwy 08L. Class IIIE.

ILS/DME 109.7 I-IAH Chan 34 Rwy 08R. Class IE. DME also serves Rwy 26.

ILS/DME 110.9 I-JYO Chan 46 Rwy 09. DME also serves Rwy 27.

ILS 111.15 I-LKM Rwy 15R. Class IE. LOC unusable byd 30° right of course. DME unusable byd 25° left of course.

ILS/DME 109.7 I-JYV Chan 34 Rwy 26L. Class IIIE. DME also serves Rwy 08.

ILS/DME 111.55 I-OND Chan 52(Y) Rwy 26R. Class IIIE.

ILS/DME 110.9 I-GHI Chan 46 Rwy 27. Class IIIE. DME also serves Rwy 09.

ILS 111.9 I-CDG Rwy 33R. Class IE.

HOUSTON EXEC (TME)(KTME) 28 W UTC-6(-5DT) N29°48.30' W95°53.87'

166 B NOTAM FILE CXO

RWY 18-36: H6610X100 (ASPH) D-101 MIRL

RWY 18: REIL. PAPI(P4L)-GA 3.0° TCH 40'. P-line.

RWY 36: REIL. PAPI(P4L)-GA 3.0° TCH 40'. Rgt tfc.

SERVICE: S4 FUEL 100LL, JET A OX 3, 4 LGT Actvt MIRL Rwy

18-36, REIL Rwy 18 and 36-CTAF.

NOISE: Noise sensitive area east of aprt in effect, avoid housing area.

AIRPORT REMARKS: Attended continuously. Birds on and invof aprt.

AIRPORT MANAGER: 281-945-5000

WEATHER DATA SOURCES: AWOS-3 119.525 (281) 945-5451. or 713-932-8437.

COMMUNICATIONS: CTAF 126.975 UNICOM 122.975 ATIS 119.525 (24 hr 281-945-5451)

Ⓡ HOUSTON APP/DEP CON 123.8

TOWER 126.975 (1200-0400Z)

GND CON 132.075 CLNC DEL 132.075

CLEARANCE DELIVERY PHONE: For CD when ATCT is clsd ctc Houston Apch at 281-443-5844 to cnl IFR at 281-443-5888.

AIRSPACE: CLASS D svc 1200-0400Z; other times CLASS E.

RADIO AIDS TO NAVIGATION: NOTAM FILE ELA.

EAGLE LAKE (DH) DME 116.4 ELA Chan 111 N29°39.75'

W96°19.03' 069° 23.5 NM to fld. 192.

HOUSTON

H-7C, L-19D, 21A, GOMW
IAP, AD

