

FAYETTEVILLE

DRAKE FLD (FVY)(KFVY) 3 S UTC-6(-5DT) N36°00.31' W94°10.20'

1252 B TPA—2101(849) Class IV, ARFF Index A NOTAM FILE FVY

RWY 16-34: H6005X100 (ASPH-GRVD) S-90, D-150, 2S-175,
2D-175 MIRL

RWY 16: ODALS. PAPI(P4L)—GA 3.0° TCH 50'.

RWY 34: ODALS. PAPI(P4L)—GA 3.5° TCH 58'. Tree.

RUNWAY DECLARED DISTANCE INFORMATION

RWY 16: TORA-6005 TODA-6005 ASDA-6005 LDA-6005

RWY 34: TORA-6005 TODA-6005 ASDA-6005 LDA-6005

SERVICE: S2 FUEL 100LL, JET A LGT When ATCT clsd MIRL Rwy
16-34 preset med instst. Actvt ODALS Rwy 16 and 34; PAPI Rwy
34—CTAF.

AIRPORT REMARKS: Attended Mon-Fri 1200-0400Z‡, Sat-Sun
1400-0200Z‡. Deer on and infov arpt. For fuel after hrs call
479-443-4343, fee charged. Self service avbl 24hrs. 24 hr PPR for
air carrier ops with more than 30 passenger seats call arpt manager
479-718-7642 and fax FBO 479-718-7646.

AIRPORT MANAGER: (479) 718-7644

WEATHER DATA SOURCES: ASOS 119.575 (479) 442-5237.

COMMUNICATIONS: CTAF 128.0 ATIS 119.575 UNICOM 122.95

FAYETTEVILLE RCO 122.3 (JONESBORO RADIO)

Ⓡ RAZORBACK APP/DEP CON 121.0 (1130-0500Z‡)

Ⓡ MEMPHIS CENTER APP/DEP CON 126.1 (0500-1130Z‡)

TOWER 128.0 (1200-0400Z‡) GND CON 121.8

CLEARANCE DELIVERY PHONE: For CD ctc Memphis ARTCC at 901-368-8453/8449.

AIRSPACE: CLASS D svc 1200-0400Z‡; other times CLASS E.

RADIO AIDS TO NAVIGATION: NOTAM FILE JBR.

RAZORBACK (VH) (H) VORTACW 116.4 RZC Chan 111 N36°14.79' W94°07.28' 185° 14.7 NM to fld. 1332/4E.

VOR unusable:

025°-035° byd 40 NM

025°-150° byd 22 NM blo 4,000'

070°-080° byd 40 NM

093°-103° byd 124 NM

093°-103° byd 40 NM blo 17,000'

104°-144° byd 40 NM

145°-155° byd 40 NM blo 6,500'

145°-155° byd 67 NM blo 9,500'

145°-155° byd 80 NM

150°-210° byd 22 NM blo 3,500'

156°-170° byd 40 NM

195°-215° byd 40 NM

210°-220° byd 22 NM blo 3,000'

234°-245° byd 40 NM

310°-025° byd 22 NM blo 3,000'

TACAN AZIMUTH unusable:

148°-160°

225°-240°

LOC/DME 111.9 I-FVY Chan 56 Rwy 16. LOC/DME unmonitored when ATCT clsd. LOC unusable wi 0.0 NM abv
2,500' 1.2 DME; unusable wi 2.5 NM abv 3,200' 3.7 DME.

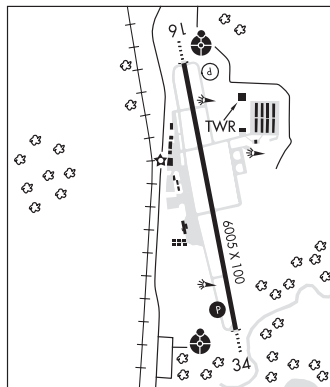
LDA/DME 111.9 I-LFH Chan 56 Rwy 34. LOC unusable byd 10 NM blw 3,500'; byd 10° right of course. DME
unusable byd 10° right of course; byd 8 NM byd 3,000'; byd 10 NM blo 3,500' byd 15 NM.

ASR (1200-0400Z‡)

KANSAS CITY

H-6I, L-16F

IAP, AD



FAYETTEVILLE N36°00.50' W94°10.83'

RCO 122.3 (JONESBORO RADIO)

KANSAS CITY

L-16F