

**CHESTER**

**ROGERS FLD** (OØ5) 2 SW UTC-8(-7DT) N40°16.94' W121°14.47'

**KLAMATH FALLS**  
H-3B, L-2H, 11A

4534 B NOTAM FILE RIU

**RWY 16-34:** H5020X100 (ASPH) S-60, D-110 MIRL 0.4% up N

**RWY 16:** PAPI(P2L)—GA 3.0° TCH 45'. Trees.

**RWY 34:** PAPI(P2L)—GA 3.0° TCH 32'. Trees. Rgt tfc.

**SERVICE:** FUEL 100LL, JET A LGT ACTIVATE MIRL Rwy 16-34 and PAPI Rwy 16 and Rwy 34—CTAF.

**AIRPORT REMARKS:** Attended 1600Z±-dusk.

**AIRPORT MANAGER:** 530-283-6069

**WEATHER DATA SOURCES:** AWOS-3 118.275 (530) 258-2860.

**COMMUNICATIONS:** CTAF/UNICOM 122.8

**CLEARANCE DELIVERY PHONE:** For CD ctc Oakland ARTCC at 510-745-3380.

**RADIO AIDS TO NAVIGATION:** NOTAM FILE RBL.

**RED BLUFF (VH) (H) VORTACW** 115.7 RBL Chan 104 N40°05.93' W122°14.18' 058° 47.1 NM to fld. 321/18E.

VOR unusable:

015°-087° byd 40 NM

174°-178° byd 40 NM

188°-267° byd 40 NM

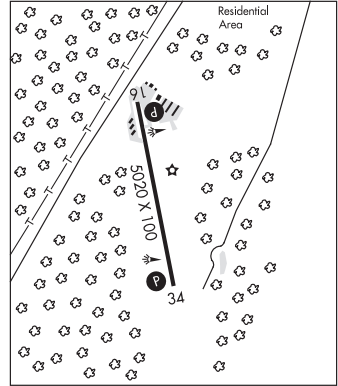
268°-278° byd 40 NM blo 8,000'

268°-278° byd 63 NM

279°-287° byd 40 NM

280°-300° blo 3,500'

298°-304° byd 40 NM



**CHICO RGNL** (CIC)(KCIC) 4 N UTC-8(-7DT) N39°47.72' W121°51.51'

**SAN FRANCISCO**  
H-3B, L-2G/H  
IAP, AD

240 B TPA—See Remarks Class III, ARFF Index A NOTAM FILE CIC

**RWY 13L-31R:** H6724X150 (ASPH-GRVD) S-63, D-100, 2S-127,

2D-170 PCN 20 F/B/X/T HIRL 0.5% up NW

**RWY 13L:** MALSR. PAPI(P4L)—GA 3.0° TCH 52'. Rgt tfc.

**RWY 31R:** REIL. VASI(V4L)—GA 3.0° TCH 54'.

**RWY 13R-31L:** H3000X60 (ASPH) S-12.5 PCN 9 F/C/Y/T 0.4% up NW

**RWY 13R:** Rgt tfc.

**RUNWAY DECLARED DISTANCE INFORMATION**

**RWY 13L:**TORA-6724 TODA-6724 ASDA-6724 LDA-6724

**RWY 13R:**TORA-3000 TODA-3000 ASDA-3000 LDA-3000

**RWY 31L:**TORA-3000 TODA-3000 ASDA-3000 LDA-3000

**RWY 31R:**TORA-6724 TODA-6724 ASDA-6724 LDA-6724

**SERVICE:** S4 FUEL 100LL, JET A OX3 LGT When twr clsd ACTVT MALSR Rwy 13L; REIL Rwy 31R; PAPI Rwy 13L; VASI Rwy 31R; HIRL Rwy 13L-31R—CTAF.

**AIRPORT REMARKS:** Attended 1500-0300Z±. Fuel avbl 1530-0300Z±. For fuel after hrs call 530-588-4888. Birds on and invof arpt. PPR for scheduled air carrier svc involving acft with more than 9 passenger seats and unscheduled air carrier svc involving acft with more than 30 passenger seats. Without PPR, ARFF svcs may not be avbl. For PPR ctc arpt mgr 530-896-7216. For jet/heavy acft opr E of fld TPA—1740(1500), for light acft opr W and E of fld TPA—1240(1000). Rwy 13R-31L is part of an asph pad 3000'X1500'.

**AIRPORT MANAGER:** 530-896-7216

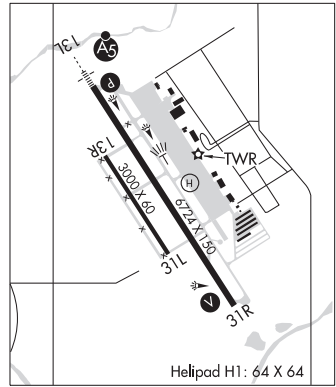
**WEATHER DATA SOURCES:** AWOS-3 119.675 (530) 879-3850. LAWRS.

**COMMUNICATIONS:** CTAF 121.0 ATIS 119.675 UNICOM 122.95

Ⓡ OAKLAND CENTER APP/DEP CON 132.2

TOWER 121.0 (1500-0300Z±) GND CON 121.9

**AIRSPACE:** CLASS D svc 1500-0300Z±; other times CLASS G.



CONTINUED ON NEXT PAGE

## CONTINUED FROM PRECEDING PAGE

RADIO AIDS TO NAVIGATION: NOTAM FILE RBL.

RED BLUFF (VH) (H) VORTACW 115.7 RBL Chan 104 N40°05.93' W122°14.18' 118° 25.2 NM to fld. 321/18E.

VOR unusable:

015°-087° byd 40 NM  
174°-178° byd 40 NM  
188°-267° byd 40 NM  
268°-278° byd 40 NM blo 8,000'  
268°-278° byd 63 NM  
279°-287° byd 40 NM  
280°-300° blo 3,500'  
298°-304° byd 40 NM

ILS/DME 111.3 I-CIC Chan 50 Rwy 13L. Class IE. Unmonitored when ATCT closed.

COMM/NAV/WEATHER REMARKS: Emerg frequency 121.5 not avbl at twr.

• • • • •  
HELIPAD H1: H64X64 (CONC) S-35

**CHINA LAKE NAWs (ARMITAGE FLD) (NID)(KNID) NAS 3 NW UTC-8(-7DT) N35°41.14' LOS ANGELES**

W117°41.53'

H-41, L-7C

2284 B NOTAM FILE NID Not insp.

DIAP, AD

RWY 03-21: H10001X200 (CONC) PCN 111R/B/W/T HIRL

RWY 21: OLS. PAPI(P4L)—GA 3.0° TCH 57'. 0.8° up.

RWY 14-32: H9014X200 (ASPH) PCN 16 R/B/W/T HIRL

RWY 14: OLS. PAPI(P4R)—GA 3.0° TCH 52'.

RWY 32: OLS. PAPI(P4R)—GA 3.0° TCH 50'.

RWY 08-26: H7111X75 (CONC) PCN 59 R/B/W/T HIRL

ARRESTING GEAR/SYSTEM

RWY 03 HOOK E28(B) (1657 FT).

HOOK E28(B) (2793 FT). RWY 21

RWY 14 HOOK E28(B) (1501 FT).

HOOK E28(B) (1199 FT). RWY 32

RWY 08 HOOK E28(B) (1765 FT).

HOOK E28(B) (1546 FT). RWY 26

SERVICE: LGT Rwy 08-26 marked and lighted 75' wide. Rwy 03-21 and Rwy 14-32 marked and lighted 200'.

MILITARY— JASU 3(GTC-85) 5(NC-10A1) 1(NC-10B) 1(NC-10C) 7(AM32A-108) 4(A/M47A-4) 4(MSU-200). FUEL F24 - Avbl 1400-0700Z† Mon-Thu; 1400-0400Z† altn Thu-Fri; 2200-0500Z† Sun. Cld sun preceding Mon hol and altn Fri. FLUID SP PRESAIR LHOX LOX - Avbl 1400-2300Z† Mon-Fri, clsd altn Fri-Sat-Sun-hol. OXRB. OIL O-133-156

TRAN ALERT Exp svc delay. Ltd tran svc avbl 1530-0030Z† Mon-Fri.

NOISE: Dep avoid overflight China Lake and ctc of Ridgecrest 2 NM SSE.

MILITARY REMARKS: Opr Mon-Fri 1530-0630Z†, Sun 2300-0100Z†. Clsd altn Fri. Open 1530-2030Z†, clsd 2030-2300Z†, open 2330-0100Z† 1st working/non-hol Fri of the month. Sat-Sun opr by PPR/icl use only. See FLIP AP/1

Supplementary Arpt Info. Flt Haz R2508 and China Lake NAWs Supplementary Arpt Remarks. RSTD PPR DSN 437-5301. All PPR issued 1530-0630Z† weekdays only. PPR civil acct offl bus. Rstd afld hrs subject change. Pilots filing KNID China Lake as an altn or emerg div are advd to call base ops DSN 437-5475 to verify opr hrs. Twy H is clsd, non-operational. CAUTION Bird hazard near golf course, within Class D Airspace Oct-Apr. Twy B and Twy G not lgtd. Twy C clsd. Rwy 08-26 clsd for const. TFC PAT Reduced rwy separation standards in effect USN/USMC acct. Twy B and Twy G are not lighted. CSTMS/AG/IMG Customs not avbl. Acft entering from foreign countries must clear Customs prior arrival.

MISC Tran acct to/fr China Lake NID must ctc R2508 Complex Control Board for schedule/brief prior to obtaining a PPR. Portions of apch end Rwy 26 and adj twy not visible fr twr.

COMMUNICATIONS: ATIS 322.375

® JOSHUA APP/DEP CON 133.65 348.7

TOWER 120.15 340.2 (1530-0630Z† Mon-Fri; clsd altn Fri. 2300-0000Z† Sun. Opn 1530-2030Z†, clsd 2030Z†, opn 2300-0000Z† 1st working/non-hol Fri of the month. Sat-Sun opr by PPR/icl use only) (Rstd afld hrs subject to change)

GND CON 350.3 CLNC DEL 274.7

PMSV METRO 343.15 (Mon-Fri 1300-0700Z†, clsd alternate Fri.)

VFR ADVISORY SVC 133.65 126.55 127.5 291.6 348.7 (Provided to all pilots opr within adjacent R2508. Ctc Joshua APP CON.)

AIRSPACE: CLASS D svc 1530-0630Z† Mon-Fri, 2300-0100Z† Sun, clsd altn Fri, opn 1530-2030Z†, clsd 2030-2300Z†, opn 2300-0100Z† 1st working/non-hol Fri of the month, Sat-Sun opr by PPR/icl use only; other times CLASS G.

CONTINUED ON NEXT PAGE