

## DEL NORTE

**ASTRONAUT KENT ROMINGER** (RCV)(KRCV) 3 N UTC-7(-6DT) N37°42.83' W106°21.12'

DENVER  
H-3E, L-9E  
IAP

7955 B NOTAM FILE DEN

**RWY 06-24:** H6051X75 (ASPH) MIRL 1.1% up SW

**RWY 06:** REIL. PAPI(P2L)—GA 4.0° TCH 43'. Rgt tfc.

**RWY 24:** REIL. PAPI(P2L)—GA 3.0° TCH 40'.

**RWY 03-21:** 4812X60 (TURF)

**RWY 21:** Road.

**SERVICE:** FUEL 100LL, JET A+ LGT Actvt REIL Rwy 06 and 24, PAPI Rwy 06 and 24, MIRL Rwy 06-24—CTAF. REIL Rwy 06 and 24 only opr at ngt. Rwy 06 VGSi unusbl byd 5° right of crs.

**AIRPORT REMARKS:** Unattended. Wildlife on and invof arpt. Fuel avblty: 100LL 24 hrs with cc; Jet A+ by apntmt, ctc AMGR 719-221-6677. Unl vehicle aces on arpt. Mtus trm all quads. Rwy 03-21 has nmrs holes first 500 ft of Rwy 03; rough sfc thrut. Rwy 21 +8 ft sign 20 ft from thr 10 ft R of cntrln.

**AIRPORT MANAGER:** 719-221-6677

**WEATHER DATA SOURCES:** AWOS-3PT 118.275 (719) 657-9017.

**COMMUNICATIONS:** CTAF 122.9

Ⓡ DENVER CENTER APP/DEP CON 128.375

**CLEARANCE DELIVERY PHONE:** For CD ctc Denver ARTCC at 303-651-4257.

**RADIO AIDS TO NAVIGATION:** NOTAM FILE ALS.

**ALAMOSA (VH) (H) VORTACW** 113.9 ALS Chan 86 N37°20.95'

W105°48.93' 298° 33.7 NM to fld. 7535/13E.

VOR unusable:

025°-045° byd 25 NM blo 15,900'

072°-149° byd 40 NM

150°-180° byd 35 NM blo 11,600'

181°-213° byd 40 NM

214°-224° byd 40 NM blo 13,000'

214°-224° byd 56 NM

225°-333° byd 40 NM

334°-344° byd 40 NM blo 18,000'

345°-348° byd 40 NM

352°-024° byd 40 NM

TAC AZM unusable:

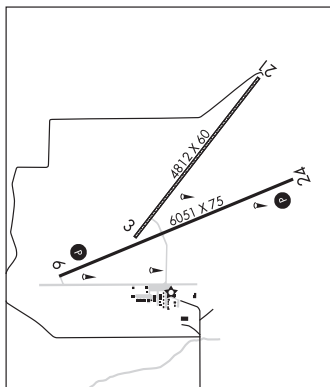
025°-045° byd 25 NM blo 15,900'

150°-180° byd 35 NM blo 11,600'

DME unusable:

025°-045° byd 25 NM blo 15,900'

150°-180° byd 35 NM blo 11,600'



## DELTA

**BLAKE FLD** (AJZ)(KAJZ) 3 N UTC-7(-6DT) N38°47.14' W108°03.72'

DENVER  
H-3E, L-9E  
IAP

5193 B TPA-6200(1007) NOTAM FILE DEN

**RWY 03-21:** H5598X75 (ASPH) S-30, D-30 MIRL 1.5% up NE

**RWY 03:** REIL. PAPI(P2L)—GA 3.0° TCH 40'. Rgt tfc.

**RWY 21:** REIL. PAPI(P2L)—GA 3.0° TCH 37'.

**RWY 14-32:** 2494X60 (DIRT) 1.4% up NW

**SERVICE:** S3 FUEL 100LL, JET A OX3 LGT ACTVT REIL Rwy 03 and Rwy 21; MIRL Rwy 03-21—CTAF. PAPI Rwy 03 and 21 on consly.

**AIRPORT REMARKS:** Attended Mon-Fri 1500-0000Z±. 24 hr self serve fuel avbl. After hrs emerg fone, Sheriff Dept 970-874-2000/aft hrs svc 970-209-0883. Plines 2640' NW Rwy 03-21, +52' AGL. Rwy 21 has turn around taxi has blue/white reflectors. Rwy 03 has +4' fence 580' from thld OB. Antelope on and invof arpt. Rwy 03-21 has 4' bushes 15-20' from rwy edge on both sides in various places. Rwy 03-21 slopes up to the NE.

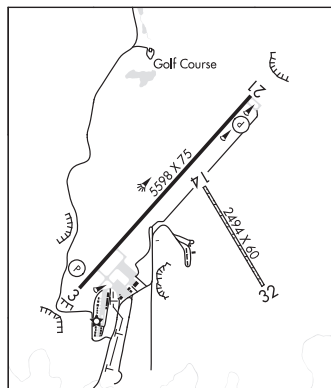
**AIRPORT MANAGER:** 970-874-5181

**WEATHER DATA SOURCES:** AWOS-3 134.0 (970) 874-3251.

**COMMUNICATIONS:** CTAF/UNICOM 122.8

DENVER CENTER APP/DEP CON 127.1

**CLEARANCE DELIVERY PHONE:** For CD ctc Denver ARTCC at 303-651-4257.



CONTINUED ON NEXT PAGE

SW, 21 MAR 2024 to 16 MAY 2024

CONTINUED FROM PRECEDING PAGE

RADIO AIDS TO NAVIGATION: NOTAM FILE DEN.

**GRAND JUNCTION (VH) (DH) VORW/DME** 112.4 JNC Chan 71 N39°03.57' W108°47.55' 100° 37.9 NM to fld.  
7100/15E.

DME unusable:

125°-135° byd 33 NM blo 12,000'  
136°-176° byd 33 NM blo 14,000'

VOR unusable:

070°-076° byd 40 NM  
077°-087° byd 40 NM blo 15,000'  
077°-087° byd 66 NM  
088°-092° byd 40 NM  
093°-103° byd 40 NM blo 13,000'  
093°-103° byd 51 NM  
104°-124° byd 40 NM  
125°-135° byd 33 NM blo 12,000'  
125°-135° byd 47 NM  
136°-145° byd 40 NM  
146°-156° byd 40 NM blo 15,000'  
146°-156° byd 57 NM  
157°-205° byd 40 NM

**WESTWINDS** (D17) 4 W UTC-7(-6DT) N38°45.51' W108°08.91'

DENVER  
L-9E

5000 NOTAM FILE DEN

**RWY 04-22:** H4100X40 (ASPH)

**RWY 22:** Trees.

**RWY 13-31:** 2000X70 (GRVL-DIRT)

**RWY 13:** Hill.

**RWY 31:** Road.

**AIRPORT REMARKS:** Attended 1500-0000Z. Rwy 04-22 CLOSED to acct 8,500 lbs or more. Wildlife on and invof arpt. +100' to 300' mountains lctd north, west and east of arpt at varying distances. Rwy 22 has 180' mountain 1500' from rwy end, apch slope 7:1. Rwy 13-31 soft when wet. Rwy 31 has +10' trees 150' from thld 0B. +40' tree 60' from thld 50' rgt of cntrln. Rwy 04 has +120' terrain 2700' from thld 380' left of cntrln.

**AIRPORT MANAGER:** 303-829-1696

**COMMUNICATIONS:** CTAF/UNICOM 122.8

**CLEARANCE DELIVERY PHONE:** For CD ctc Denver ARTCC at 303-651-4257.

RADIO AIDS TO NAVIGATION: NOTAM FILE MTJ.

**MONTROSE (VH) (H) VORW/DME** 117.1 MTJ Chan 118 N38°30.39' W107°53.96' 310° 19.1 NM to fld.  
5713/12E. vDME unmonitored.

DME unusable:

011°-090° byd 26 NM blo 15,000'  
190°-250° byd 25 NM blo 15,000'

VOR unusable:

001°-167° byd 40 NM  
060°-090° byd 26 NM blo 16,000'  
167°-178° byd 50 NM  
168°-178° byd 40 NM blo 16,300'  
179°-251° byd 40 NM  
190°-250° byd 25 NM blo 15,000'  
252°-262° byd 40 NM blo 13,000'  
252°-262° byd 51 NM blo 15,500'  
252°-262° byd 72 NM  
263°-295° byd 40 NM  
313°-360° byd 40 NM