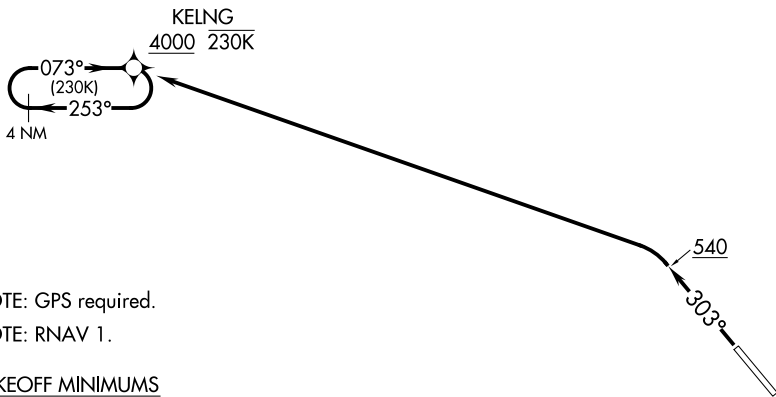


SEATTLE CENTER  
124.2 317.6  
UNICOM  
122.725 (CTAF)



NOTE: GPS required.  
NOTE: RNAV 1.

TAKEOFF MINIMUMS

- Rwy 12: NA - Terrain.
- Rwy 30: 600-3 with minimum climb of 295' per NM to 1300 or standard with minimum climb of 310' per NM to 900.

TAKEOFF OBSTACLE NOTES

- Rwy 30: Poles 21' from DER, 299' right of centerline, 31' AGL/49' MSL.
- Trees 92' from DER, 439' right of centerline, 59' MSL.
- Poles beginning 190' from DER, 348' left of centerline, up to 29' AGL/49' MSL.
- Trees, pole beginning 213' from DER, 43' right of centerline, up to 155' MSL.
- Vehicles on road 387' from DER, 596' left of centerline, 57' MSL.
- Towers 501' from DER, 425' left of centerline, 49' AGL/70' MSL.
- Trees beginning 531' from DER, 201' left of centerline, up to 91' MSL.
- Transmission lines beginning 1648' from DER, 644' left of centerline, up to 79' AGL/100' MSL.
- Trees, transmission line beginning 1737' from DER, 17' left of centerline, up to 131' MSL.
- Trees beginning 2235' from DER, 35' right of centerline, up to 157' MSL.
- Trees, transmission line beginning 2335' from DER, 110' left of centerline, up to 146' MSL.
- Trees 4956' from DER, 112' left of centerline, 164' MSL.
- Trees beginning 1.9 NM from DER, 2281' right of centerline, up to 342' MSL.
- Trees beginning 2 NM from DER, 980' right of centerline, up to 407' MSL.
- Trees beginning 2.1 NM from DER, 364' right of centerline, up to 433' MSL.
- Trees beginning 2.2 NM from DER, 2680' right of centerline, up to 477' MSL.
- Towers, trees beginning 2.3 NM from DER, 2369' right of centerline, up to 105' AGL/569' MSL.
- Trees beginning 2.4 NM from DER, 2095' right of centerline, up to 584' MSL.

NOTE: Chart not to scale.

DEPARTURE ROUTE DESCRIPTION

TAKEOFF RUNWAY 30: Climb on heading 303° to 540, then climbing left turn to 4000 direct KELNG and hold. Do not exceed 230K when continuing climb in hold to 4000 before proceeding on course.