

HAYWARD**SAWYER CO** (HYR)(KHYR) 2 NE UTC-6(-5DT) N46°01.52' W91°26.66'GREEN BAY
H-2J, L-14J
IAP

1216 B NOTAM FILE HYR

RWY 03-21: H5002X100 (ASPH) S-40, D-65, 2S-82 MIRL**RWY 03:** REIL. PAPI(P4L)—GA 3.0° TCH 34'. Fence.**RWY 21:** MALSR. PAPI(P4R)—GA 3.0° TCH 45'. Trees.**RWY 16-34:** 1088X120 (TURF)**RWY 16:** Trees.**RWY 34:** Trees.**SERVICE:** FUEL 100LL, JET A+ LGT Actvt MALSR Rwy 21; REIL Rwy 03; PAPI Rwys 03 & 21; MIRL Rwy 03-21—CTAF.**AIRPORT REMARKS:** Attended May-Oct 1400-0000Z†, Nov-Apr 1400-2300Z†. Rwy 16-34 CLOSED Dec 1 thru Apr 15. Birds on & invof arpt. Arpt cond unmon 2300-1400Z†. Rwy 16-34 mkd with orange steel A-frames.**AIRPORT MANAGER:** 715-634-4624**WEATHER DATA SOURCES:** ASOS 118.4 (715) 634-6138.**COMMUNICATIONS:** CTAF/UNICOM 122.8

Ⓜ MINNEAPOLIS CENTER APP/DEP CON 126.45

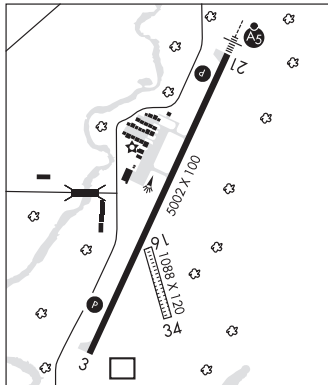
CLEARANCE DELIVERY PHONE: For CD if una via freq ctc Minneapolis ARTCC at 651-463-5588.**RADIO AIDS TO NAVIGATION:** NOTAM FILE HYR.**HAYWARD (L) DME** 113.4 HYR Chan 81 N46°01.14'

W91°26.78' at fld. 1208.

DME unusable:

Blw 10,000'

Byd 20 NM

ILS/DME 108.5 I-HTY Chan 22 Rwy 21. Class IB. Unmonitored.**HIRD** (See LIVINGSTON on page 360)**HORLICK** N42°45.73' W87°48.88' NOTAM FILE RAC.CHICAGO
L-28H, A

(T) DME 114.05 HRK Chan 87(Y) at Batten Intl. 663.

DME unusable:

205°-240° byd 20 NM

241°-204°

IOLA**CENTRAL CO** (68C) 4 E UTC-6(-5DT) N44°30.29' W89°01.55'

GREEN BAY

882 NOTAM FILE GRB

RWY 05-23: 2493X60 (TURF)**RWY 05:** Trees.**RWY 23:** Trees.**RWY 09-27:** 1783X40 (TURF) 0.6% up E**RWY 09:** Trees.**RWY 27:** Trees.**RWY 12-30:** 1745X40 (TURF)**RWY 12:** Trees.**RWY 30:** Trees.**AIRPORT REMARKS:** Unattended. Arpt CLOSED to wheeled acft when rwys covered with snow or ice. Deer on and invof arpt.

Rwy 09 marked with orange cones.

AIRPORT MANAGER: 715-412-1691**COMMUNICATIONS:** CTAF 122.9**CLEARANCE DELIVERY PHONE:** For CD ctc Minneapolis ARTCC at 651-463-5588.**IOWA CO** (See MINERAL POINT on page 369)**JANA** (See EDGERTON on page 349)