

CONTINUED FROM PRECEDING PAGE

CLEARANCE DELIVERY PHONE: For CD if una to ctc on FSS freq, ctc Seattle ARTCC at 253-351-3694.

RADIO AIDS TO NAVIGATION: NOTAM FILE ELN.

ELLENSBURG (VH) (DH) VOR/DME 117.9 ELN Chan 126 N47°01.46' W120°27.50' 261° 3.0 NM to fld.
1771/21E.

VOR unusable:

- 001°-024° byd 40 NM
- 025°-040° byd 25 NM
- 040°-065° byd 34 NM
- 065°-075° byd 34 NM blo 18,000'
- 075°-080° byd 34 NM
- 081°-089° byd 40 NM
- 090°-158° byd 10 NM
- 158°-163° byd 27 NM
- 163°-248° byd 33 NM
- 248°-268° byd 33 NM blo 10,000'
- 288°-296° byd 40 NM
- 300°-350° byd 25 NM
- 350°-025° byd 25 NM blo 18,000'

DME unusable:

- 025°-070° byd 21 NM
- 070°-090° byd 34 NM
- 090°-158° byd 10 NM
- 158°-163° byd 27 NM
- 163°-268° byd 33 NM
- 300°-350° byd 21 NM
- 350°-025° byd 15 NM

ELWHA N48°09.01' W123°40.22' NOTAM FILE CLM.

NDB (MHW/LOM) 515 CL 089° 7.1 NM to William R Fairchild Intl. 1096/16E.

NDB unusable:

- 100°-235° byd 12 NM

SEATTLE

L-1E

EPHRATA MUNI (EPH)(KEPH) 2 SE UTC-8(-7DT) N47°18.48' W119°31.01'

1276 B NOTAM FILE EPH MON Airport

RWY 03-21: H5500X75 (ASPH) S-30, D-60, 2S-114 MIRL

RWY 03: REIL. PAPI(P4L)—GA 3.0° TCH 40'. Ground. Rgt tfc. 0.3% up.

RWY 21: REIL. PAPI(P4L)—GA 3.0° TCH 40'.

RWY 11-29: H3843X60 (ASPH) S-12 MIRL

RWY 11: REIL. Ground.

RWY 29: REIL. PAPI(P2L)—GA 3.0° TCH 40'.

RWY 04-22: H3467X150 (ASPH) S-12

RWY 22: Rgt tfc.

SERVICE: S2 **FUEL** 100LL **LGT ACTVT** REIL Rwy 03, 11, 21 and 29;
MIRL Rwy 03-21 and MIRL Rwy 11-29—CTAF. PAPI Rwy 29, Rwy 03
and Rwy 21 opr consly.

AIRPORT REMARKS: Attended Mon-Fri 1530-0000Z‡. Conditions not
monitored Mon-Fri 0000-1500Z‡, conditions not monitored Sat-Sun
and hol. Fuel 24 hr credit card svc avbl. Rwy 04-22 glids use 1 Apr to
1 Nov. Be alert aerobatic acft activity over center of arpt. Ultralight
activity invof arpt. Heavy glider activity from apron area Apr-Oct.

AIRPORT MANAGER: 509-754-3508

WEATHER DATA SOURCES: ASOS 135.775 (509) 754-3761.

COMMUNICATIONS: CTAF/UNICOM 122.8

RCO 122.2 (SEATTLE RADIO)

® **GRANT COUNTY APP/DEP CON** 126.4 (1400-0600Z‡)

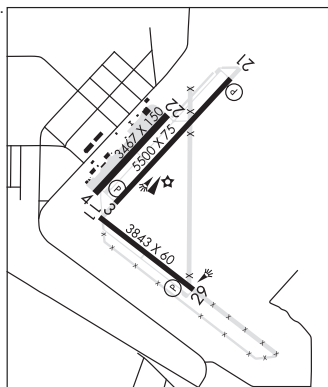
® **SEATTLE CENTER APP/DEP CON** 126.1 (0600-1400Z‡)

CLEARANCE DELIVERY PHONE: For CD if una to ctc on FSS freq, ctc Grant County Apch at 509-762-2842. when Apch clsd ctc
Seattle ARTCC at 253-351-3694.

SEATTLE

H-1C, L-13A

IAP



CONTINUED ON NEXT PAGE

CONTINUED FROM PRECEDING PAGE

AIRSPACE: CLASS E svc 1400-0600Z±; other times CLASS G.

RADIO AIDS TO NAVIGATION: NOTAM FILE EPH.

(VH) (H) VORTACW 112.6 EPH Chan 73 N47°22.68' W119°25.44' 201° 5.7 NM to fld. 1250/21E.

VOR unusable:

- 010°-014° byd 40 NM
- 042°-054° byd 40 NM
- 214°-228° byd 40 NM blo 7,000'
- 214°-228° byd 52 NM blo 10,000'
- 214°-228° byd 77 NM
- 229°-247° byd 40 NM
- 310°-350° byd 25 NM blo 6,500'
- 310°-353° byd 40 NM
- 358°-004° byd 40 NM

TACAN AZIMUTH unusable:

- 280°-295° byd 25 NM blo 7,000'
- 310°-350° byd 25 NM blo 6,500'

DME unusable:

- 280°-295° byd 25 NM blo 7,000'
- 310°-350° byd 25 NM blo 6,500'

COMM/NAV/WEATHER REMARKS: UNICOM mntd intmly.

EVERETT

SEATTLE PAINE FLD INTL (PAE)(KPAE) P (AR) 6 SW UTC-8(-7DT) N47°54.44' W122°16.93'

SEATTLE
H-1B, L-1D
IAP, AD

607 B LRA ARFF Index—See Remarks NOTAM FILE PAE

RWY 16R-34L: H9010X150 (ASPH-CONC-GRVD) S-100, D-200,

2S-175, 2D-350, 2D/2D2-830 PCN 83 F/A/W/T HIRL CL

RWY 16R: MALSRL. TDZL. PAPI(P4R)—GA 3.0° TCH 74'. RVR-TR Rgt tfc.

RWY 34L: MALSFL. PAPI(P4L)—GA 3.0° TCH 75'. RVR-TR Trees.

RWY 16L-34R: H3004X75 (ASPH) S-12.5 PCN 4 F/B/Y/T MIRL

RWY 16L: REIL. PAPI(P2L)—GA 3.25° TCH 24'. Pole.

RWY 34R: REIL. PAPI(P2L)—GA 3.0° TCH 22'. Pole. Rgt tfc.

RUNWAY DECLARED DISTANCE INFORMATION

RWY 16L:TORA-3004 TODA-3004 ASDA-3004 LDA-3004

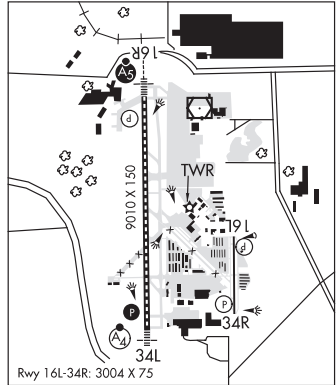
RWY 16R:TORA-9010 TODA-9010 ASDA-9010 LDA-9010

RWY 34L:TORA-9010 TODA-9010 ASDA-9010 LDA-9010

RWY 34R:TORA-3004 TODA-3004 ASDA-3004 LDA-3004

SERVICE: S4 FUEL 100LL, JET A OX 1, 3 LGT When twr clsd
ACTIVATE HIRL Rwy 16R-34L, MALSRL Rwy 16R and PAPI Rwy 34L—CTAF. MILITARY—FUEL 100LL self svc avbl 24 hrs with credit card at cntrl ramp. Hel are prohibited at the self svc fueling island. For jet and hel fuel aft hrs call 425-355-6600.

NOISE: Noise sensitive arpt; for noise abatement proc and tfc proc call arpt ops 425-388-5125. It is req that pilots adhere to the flw noise abatement proc unless otrw instrd by ATCT, itnrrnt arr and low apch of sml acft over 250 horsepower auz on Rwy 16L and 34R. Itnrrnt dep of sml acft over 250 horsepower on Rwy 34R. Avoid int deps fm Rwy 16L-34R. For NS ABTMT from 0500-1500Z± if acft performance/wind allows, use Rwy 16R for arr and Rwy 34L for dep. Lrg acft fly W pat ovr wtr; sml acft fly E pat ovr arpt. Be alert for cnvg tfc on base to final legs Rwy 16R-34L 0500-1500Z±. Trng fits discouraged after 0600Z±.



CONTINUED ON NEXT PAGE