

CHARLES R JOHNSON (See PORT MANSFIELD on page 403)

CHASE FLD INDUSTRIAL (See BEEVILLE on page 257)

CHEROKEE CO (See JACKSONVILLE on page 348)

CHILDRESS MUNI (CDS)(KCDS) 4 W UTC-6(-5DT) N34°26.03' W100°17.28'
1954 B NOTAM FILE CDS

DALLAS-FORT WORTH
H-6G, L-17B
IAP

Rwy 18-36: H5949X75 (ASPH) S-21 MIRL(NSTD)

Rwy 18: PAPI(P2L)—GA 3.0° TCH 40'. Pole.

Rwy 36: PAPI(P2L)—GA 3.0° TCH 40'.

Rwy 04-22: H4425X60 (ASPH) S-21

SERVICE: FUEL 100LL, JET A1 + L&T MIRL Rwy 18-36 preset low intst; to incr intst ACTVT—CTAF. Rwy 18-36 NSTD MIRL Rwy 36 thld lgts 60 ft south of rwy end. Rwy 18-36, nmrs lgts misg, out, incor color or orientation.

AIRPORT REMARKS: Attended 1400-2200Z±. Rwy 04-22 CLOSED indefly. 24 hr self svc 100LL and Jet A+. Full svc Jet A+ avbl durg oprg hrs; aft hrs call 940-937-8309. Rwy not mtntd; loose gravel and vegetation growing through the pavement. Some twys rough due to grass and weed encroachment. Agriculture opns near all paved sfcs.

AIRPORT MANAGER: 940-937-8309

WEATHER DATA SOURCES: ASOS 135.125 (940) 937-6337.

COMMUNICATIONS: CTAF/UNICOM 122.8

RCO 122.4 (FORT WORTH RADIO)

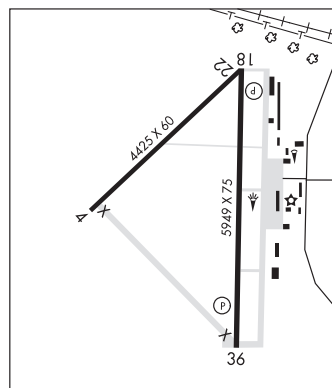
® FORT WORTH CENTER APP/DEP CON 133.5

CLEARANCE DELIVERY PHONE: For CD ctc Fort Worth ARTCC at 817-858-7584.

AIRSPACE: CLASS E svc continuous.

RADIO AIDS TO NAVIGATION: NOTAM FILE CDS.

(VL) (H) VORTACW 117.0 CDS Chan 117 N34°22.14' W100°17.34' 351° 3.9 NM to fld. 1920/10E.



CHINA SPRING

WILDCAT CANYON (3T8) 4 NW UTC-6(-5DT) N31°40.71' W97°21.75'
660 NOTAM FILE FTW

SAN ANTONIO

Rwy 15-33: 2450X60 (TURF) 0.4% up NW

Rwy 15: Fence.

Rwy 33: Road.

AIRPORT REMARKS: Unattended. Deer and wild hogs on and invof rwy. 100' + high tension power line (marked) 2500' NW of Rwy 15 end.

AIRPORT MANAGER: 817-909-8044

COMMUNICATIONS: CTAF 122.9

CLEARANCE DELIVERY PHONE: For CD ctc Fort Worth ARTCC at 817-858-7584.