

WAAS CH 53516 W22A	APP CRS 219°	Rwy Idg 6184 TDZE 666 Apt Elev 674
--	------------------------	---

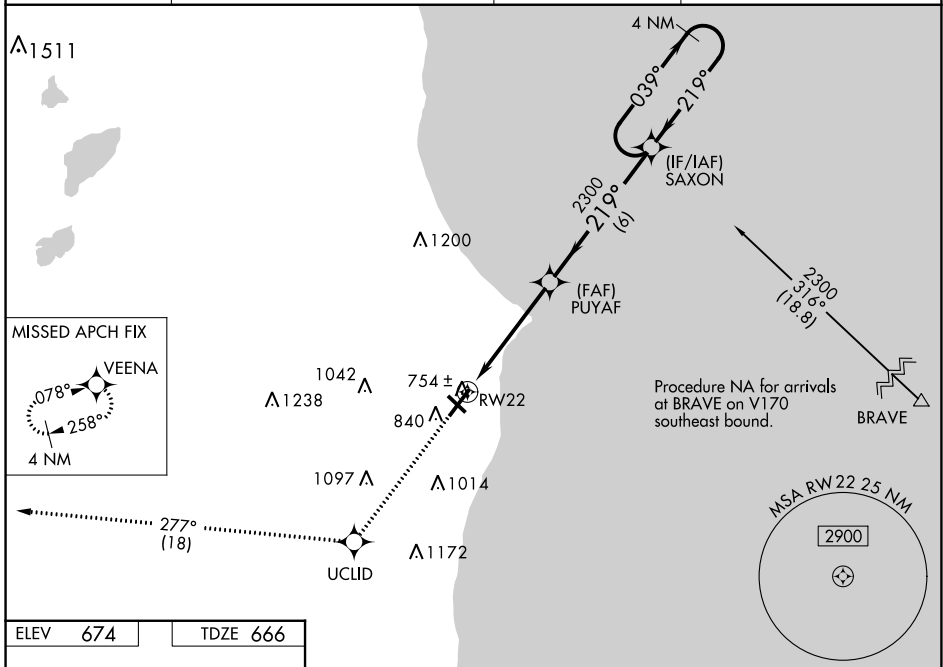
RNAV (GPS) RWY 22

BATTEN INTL (RAC)

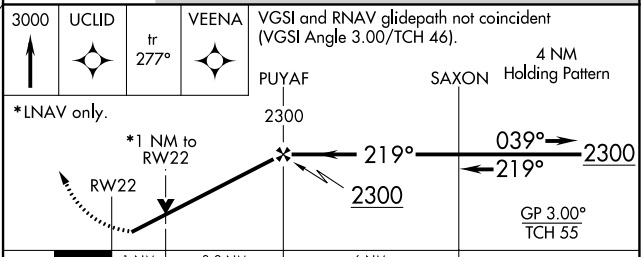
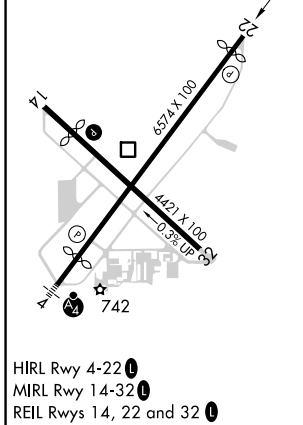
⚠ For uncompensated Baro-VNAV systems, LNAV/VNAV NA below -19°C (-2°F) or above 54°C (130°F).
⚠ DME/DME RNP-0.3 NA. When local altimeter setting not received, use General Mitchell Intl altimeter setting: increase LPV DA to 984 and all visibilities ½ SM; increase LNAV/VNAV DA to 1032 and all visibilities ¼ SM; increase all MDA 40 feet and LNAV Cat C and D visibility ½ SM and Circling Cat C and D visibility ¼ SM. Circling Rwy 14 NA at night. Rwy 22 helicopter visibility reduction below ¼ SM NA. Baro-VNAV and VDP NA when using General Mitchell Intl altimeter setting.

MISSED APPROACH:
 Climb to 3000 direct UCLID and track 277° to VEENA and hold.

ASOS 121.425	MILWAUKEE APP CON 135.875 317.725	CLNC DEL 120.15	UNICOM 123.075 (CTAF) 0
------------------------	---	---------------------------	-----------------------------------



ELEV 674	TDZE 666
----------	----------



CATEGORY	A	B	C	D
LPV DA		949-7/8	283 (300-7/8)	
LNAV/VNAV DA		997-1	331 (400-1)	
LNAV MDA		1020-1	354 (400-1)	
CIRCLING	1140-1 466 (500-1)	1160-1 486 (500-1)	1380-2 706 (800-2)	1380-2¼ 706 (800-2¼)

EC-3, 16 MAY 2024 to 13 JUN 2024

EC-3, 16 MAY 2024 to 13 JUN 2024