

APP CRS 083°	Rwy Idg 4900
	TDZE 634
	Apt Elev 634

RNAV (GPS) RWY 8

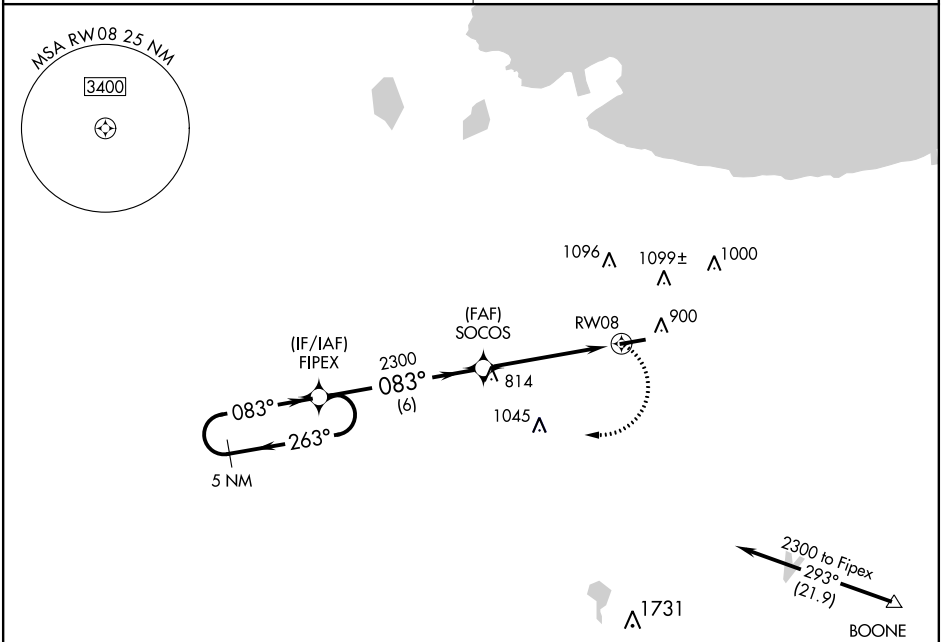
GRIFFITH-MERRILLVILLE (Ø5C)

▽ DME/DME RNP -0.3 NA. Obtain local altimeter setting on CTAF; when not received use Chicago Midway Intl altimeter setting and increase all MDAs 60 feet. Visibility reduction by helicopters NA.

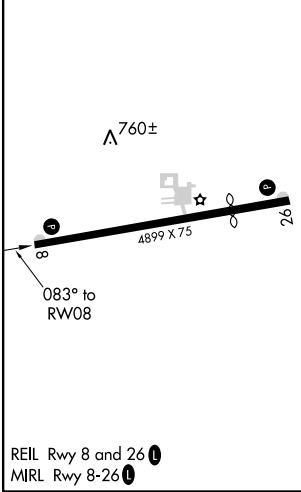
▲ NA

MISSED APPROACH: Climbing right turn to 2300 direct FIPEX and hold.

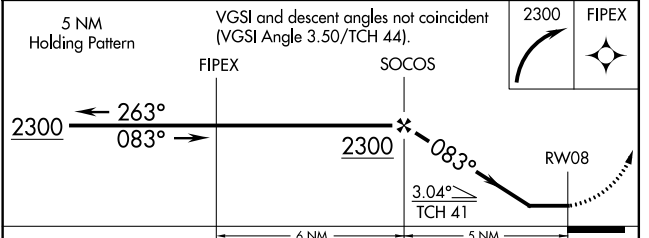
CHICAGO APP CON 133.1 285.6	UNICOM 123.0 (CTAF) 0
---------------------------------------	---------------------------------



ELEV 634	TDZE 634
----------	----------



Procedure NA for arrivals at BOONE via V422 southeastbound.



CATEGORY	A	B	C	D
LNNAV MDA	1080-1	446 (500-1)		NA
CIRCLING	1200-1	566 (600-1)		NA

GRIFFITH, INDIANA
Orig 15MAR07

41°31'N-87°24'W

GRIFFITH-MERRILLVILLE (Ø5C) RNAV (GPS) RWY 8

EC-2, 02 FEB 2017 to 02 MAR 2017

EC-2, 02 FEB 2017 to 02 MAR 2017