

LOC/DME I-FOE 110.1 Chan 38	APP CRS 312°	Rwy ldg 12803 TDZE 1037 Apt Elev 1078
---	------------------------	--

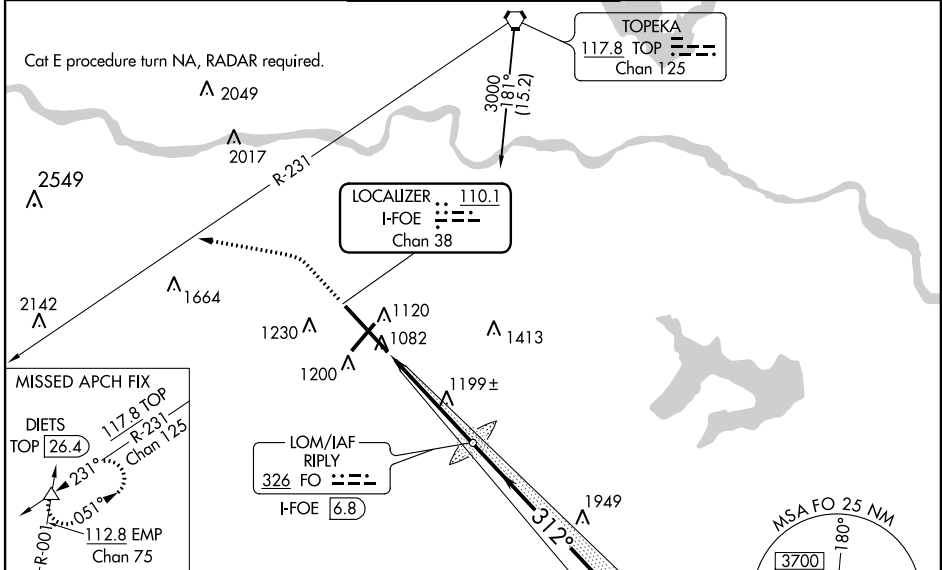
ILS or LOC RWY 31

TOPEKA RGNL (FOE)

⚠ When local altimeter setting not received, use Phillip Billard Muni altimeter setting and increase DA 45 feet and all MDA 60 feet, increase S-31 Cat E visibility to RVR 6000, S-LOC Cat E visibility to 1/4 and Circling Cat E visibility to 2 1/2. VDP NA with Phillip Billard altimeter setting. For inoperative MALSR, increase S-ILS 31 Cat E visibility to RVR 4000; and S-LOC Cat D visibility to RVR 6000, Cat E to 1/2. * Visibility Cat A/B/C/D RVR 1800 authorized with the use of FD or AP or HUD to DA.

MALSR
⚠ MISSED APPROACH: Climb to 1900 then climbing left turn to 3700 heading 275° and TOP R-231 to DIETS INT/TOP 26.4 DME and hold.

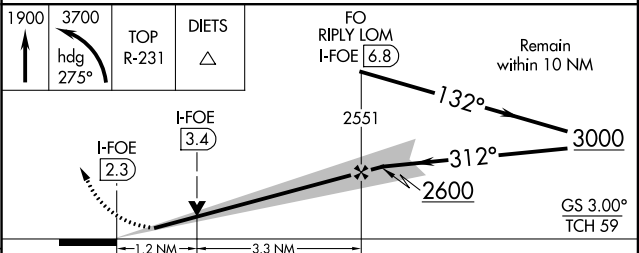
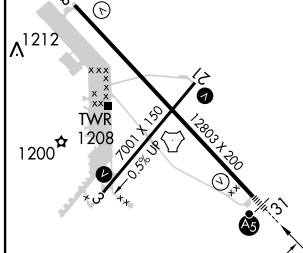
ATIS 128.25	KANSAS CITY CENTER 123.8 343.7	FORBES TOWER* 120.8 (CTAF) 340.2	GND CON 121.7 275.8	UNICOM 122.95
-----------------------	--	--	-------------------------------	-------------------------



NC-2, 02 MAR 2017 to 30 MAR 2017

NC-2, 02 MAR 2017 to 30 MAR 2017

ELEV 1078	D	TDZE 1037
-----------	---	-----------



CATEGORY	A	B	C	D	E
S-ILS 31	*1237/24 200 (200-1/2)				
S-LOC 31	1460/24	423 (400-1/2)	1460/40 423 (400-3/4)	1460/50	423 (400-1)
CIRCLING	1520-1 442 (500-1)	1580-1 502 (600-1)	1580-1 1/2 502 (600-1 1/2)	1700-2 622 (700-2)	1720-2 1/4 642 (700-2 1/4)