

# RNAV (GPS) Y RWY 30

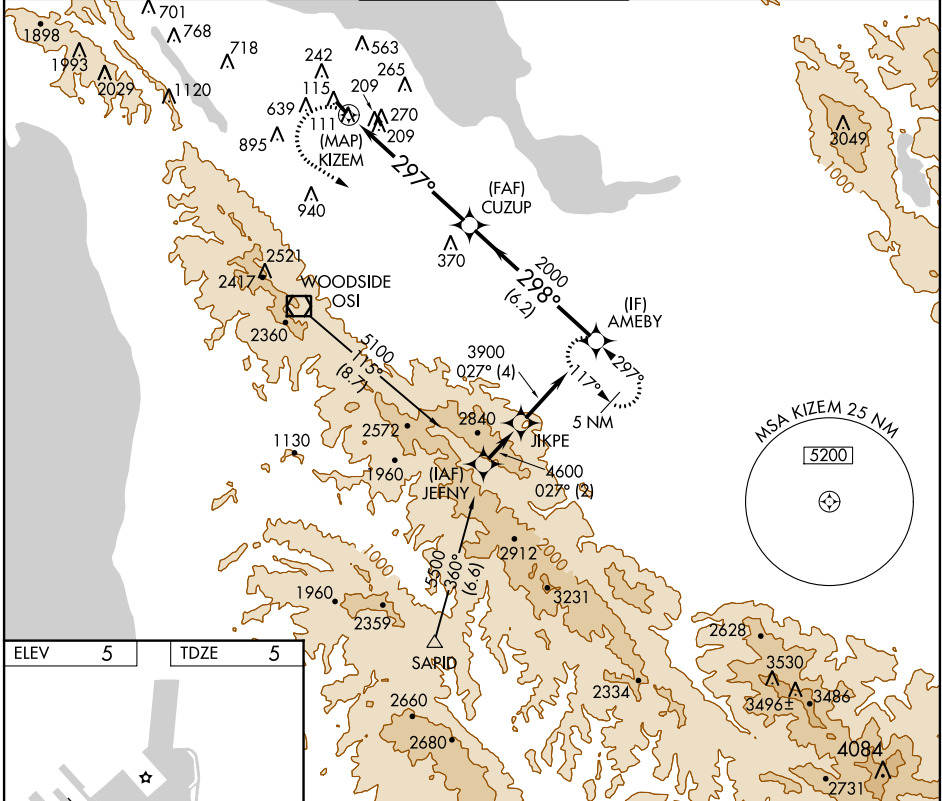
SAN CARLOS (SQL)

APP CRS	Rwy Idg	<b>2600</b>
<b>297°</b>	TDZE	<b>5</b>
	Apt Elev	<b>5</b>

**▽** DME/DME RNP-0.3 NA. When local altimeter setting not received, use San Francisco Intl altimeter setting and increase all MDA 20 feet.  
**▲ NA** Visibility reduction by helicopters NA. Circling NA west of runway 12-30.

**MISSED APPROACH:** Climbing left turn to 4300 direct AMEBY and hold, continue climb-in-hold to 4300.

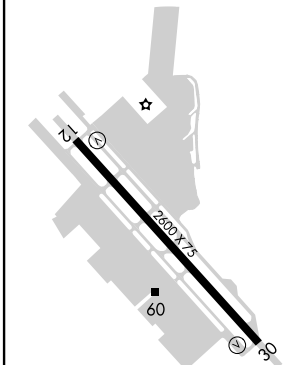
ATIS <b>125.9</b>	NORCAL APP CON <b>133.95 317.6</b>	SAN CARLOS TOWER ★ <b>119.0 (CTAF) 0 326.2</b>	GND CON <b>121.6</b>	UNICOM <b>122.95</b>
----------------------	---------------------------------------	---	-------------------------	-------------------------



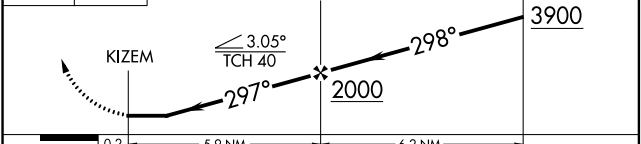
SW-2, 02 MAR 2017 to 30 MAR 2017

SW-2, 02 MAR 2017 to 30 MAR 2017

ELEV	<b>5</b>	TDZE	<b>5</b>
------	----------	------	----------



4300 AMEBY **▽** VGSI and descent angles not coincident (VGSI Angle 3.00/TCH 25). AMEBY



CATEGORY	A	B	C	D
LNAV MDA	1260-1 ¼ 1255 (1300-1 ¼)	1260-1 ½ 1255 (1300-1 ½)		NA
CIRCLING	1260-1 ¼ 1255 (1300-1 ¼)	1260-1 ½ 1255 (1300-1 ½)		NA