

APP CRS	Rwy Idg	2600
297°	TDZE	5
	Apt Elev	5

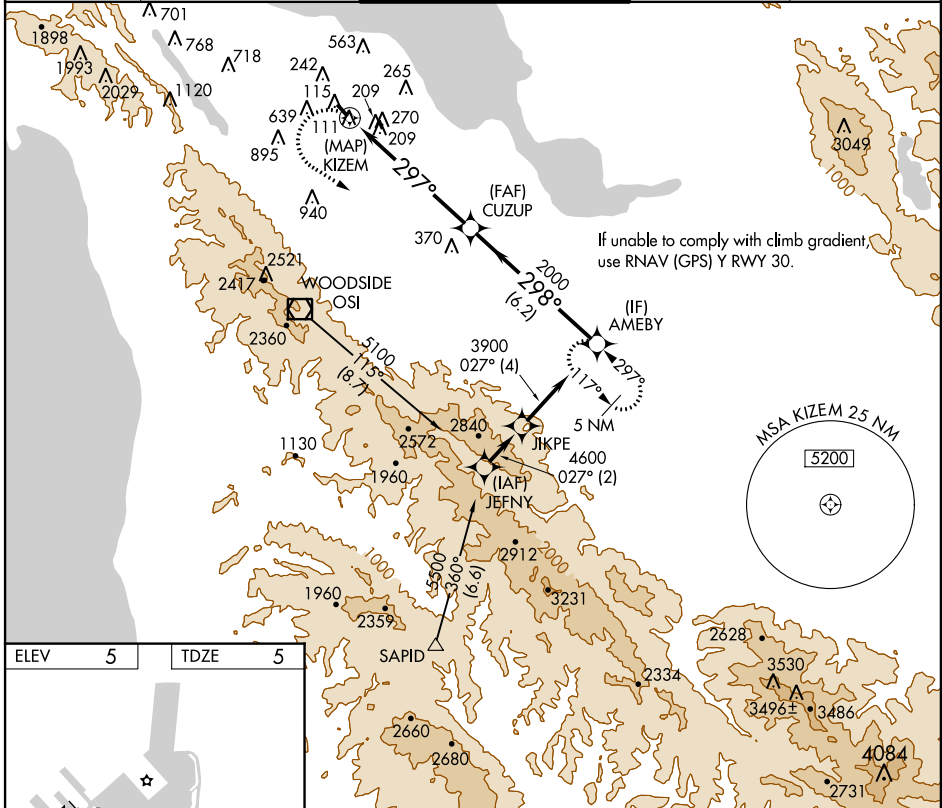
RNAV (GPS) Z RWY 30

SAN CARLOS (SQL)

▽ DME/DME RNP-0.3 NA. When local altimeter setting not received, use San Francisco Intl altimeter setting and increase all MDA 20 feet.
▲ NA Missed approach requires minimum climb of 302 feet per NM to 4300. Circling NA west of runway 12-30. Visibility reduction by helicopters NA.

MISSED APPROACH: Climbing left turn to 4300 direct AMEBY and hold, continue climb-in-hold to 4300.

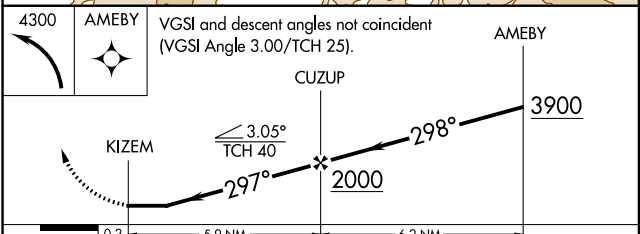
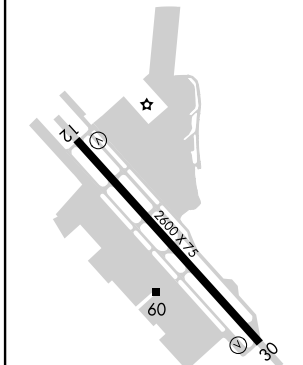
ATIS 125.9	NORCAL APP CON 133.95 317.6	SAN CARLOS TOWER ★ 119.0 (CTAF) 0 326.2	GND CON 121.6	UNICOM 122.95
----------------------	---------------------------------------	---	-------------------------	-------------------------



SW-2, 02 MAR 2017 to 30 MAR 2017

SW-2, 02 MAR 2017 to 30 MAR 2017

ELEV	5	TDZE	5
------	----------	------	----------



CATEGORY	A	B	C	D
LNAV MDA	580-1	575 (600-1)	NA	
CIRCLING	580-1	620-1	NA	
	575 (600-1)	615 (700-1)		