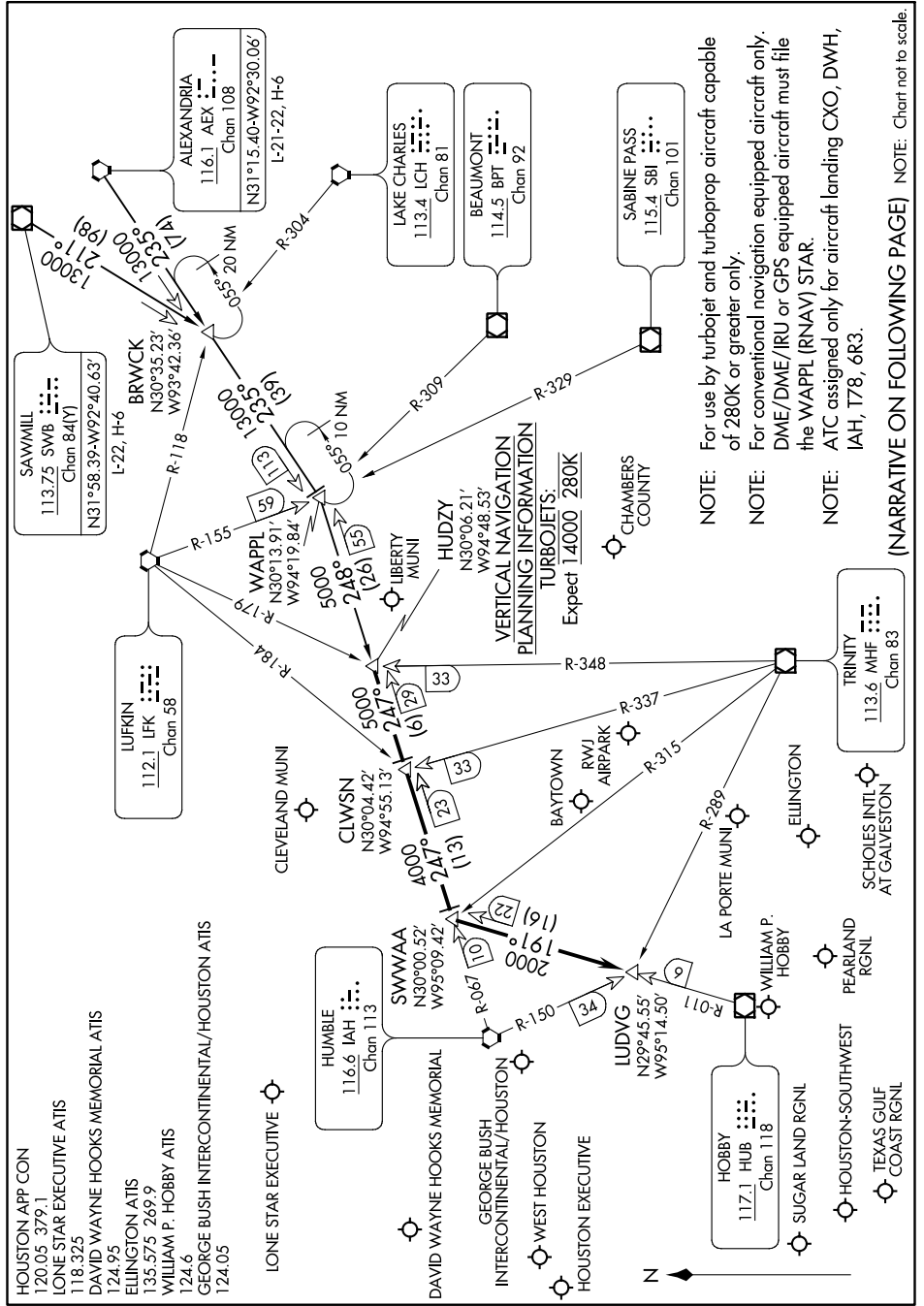


HUDZY TWO ARRIVAL

HOUSTON, TEXAS

SC-5, 30 MAR 2017 to 27 APR 2017



HUDZY TWO ARRIVAL

(HUDZY.HUDZY2) 14205

HOUSTON, TEXAS

- HOUSTON APP CON 120.05 379.1
- LONE STAR EXECUTIVE ATIS 118.325
- DAVID WAYNE HOOKS MEMORIAL ATIS 124.95
- ELLINGTON ATIS 135.575 269.9
- WILLIAM P. HOBBY ATIS 124.6
- GEORGE BUSH INTERCONTINENTAL/HOUSTON ATIS 124.05

- LONE STAR EXECUTIVE
- HUMBLE 116.6 IAH
- SWWAA N30°00.52' W95°09.42'
- DAVID WAYNE HOOKS MEMORIAL
- GEORGE BUSH INTERCONTINENTAL/HOUSTON
- INTERCONTINENTAL/HOUSTON
- WEST HOUSTON
- HOUSTON EXECUTIVE
- LUDVG N29°45.55' W95°14.50'
- HOBBY HUB 117.1 HUB
- HOUSTON-SOUTHWEST
- TEXAS GULF COAST RGNL
- SUGAR LAND RGNL
- WILLIAM P. HOBBY
- PEARLAND RGNL
- HOUSTON-SOUTH
- SCHOLES INTL AT GALVESTON
- ELLINGTON
- TRINITY 113.6 MHF

- LUFKIN 112.1 LFK
- SAWMILL 113.75 SWB
- BRWCK N30°35.23' W93°42.36'
- ALEXANDRIA 116.1 AEX
- LAKE CHARLES 113.4 LCH
- BEAUMONT 114.5 BPT
- SABINE PASS 115.4 SBI

- WAPPL N30°13.91' W94°19.84'
- LIBERTY MUNI
- HUDZY N30°06.21' W94°48.53'
- CHAMBERS COUNTY

NOTE: For use by turbojet and turboprop aircraft capable of 280K or greater only.

NOTE: For conventional navigation equipped aircraft only. DME/DME/IRU or GPS equipped aircraft must file the WAPPL (RNAV) STAR.

NOTE: ATC assigned only for aircraft landing CXO, DWH, IAH, T78, 6R3.

(NARRATIVE ON FOLLOWING PAGE) NOTE: Chart not to scale.

SC-5, 30 MAR 2017 to 27 APR 2017