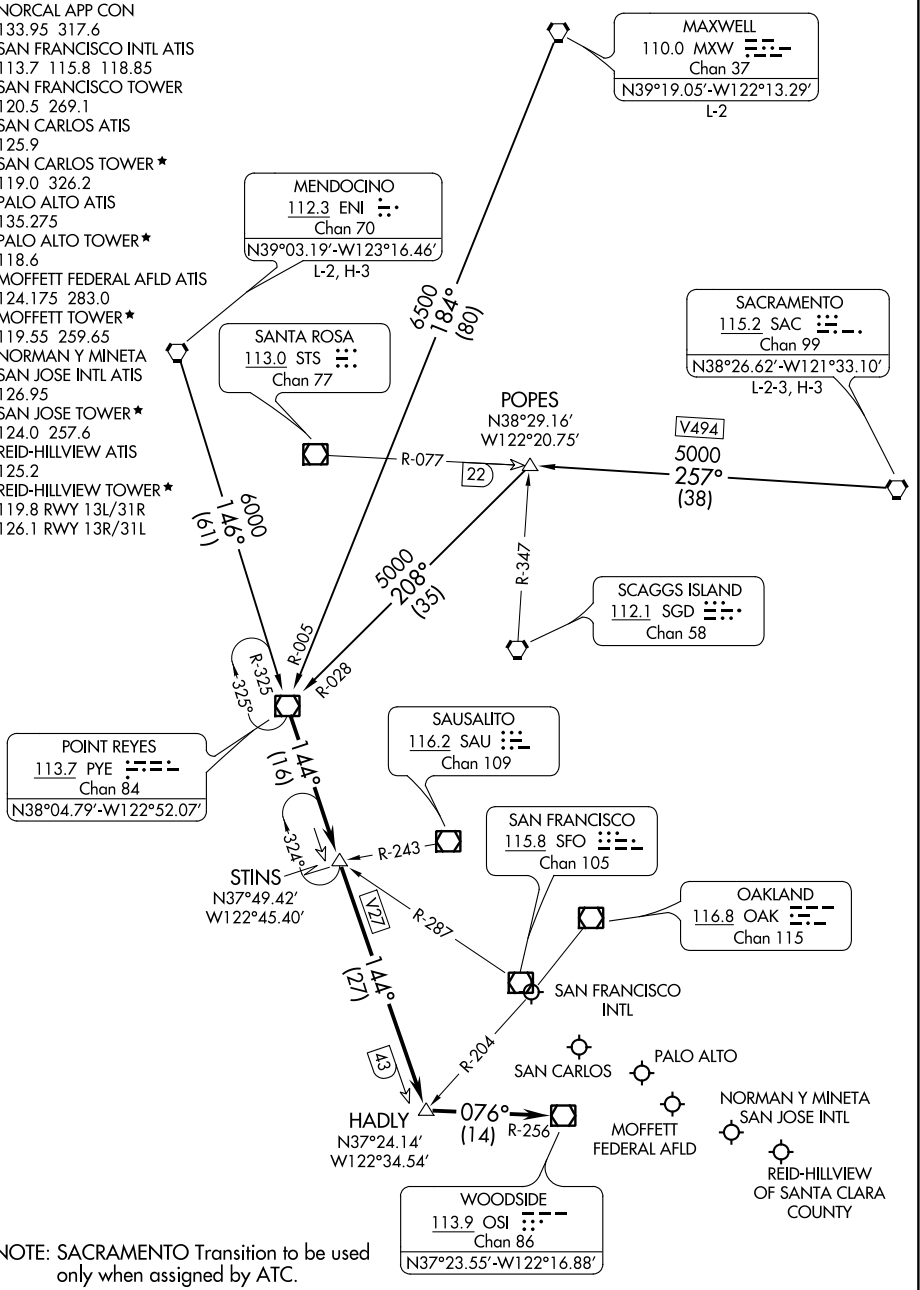


# POINT REYES TWO ARRIVAL

ST-375 (FAA)

SAN FRANCISCO, CALIFORNIA

NORCAL APP CON  
 133.95 317.6  
 SAN FRANCISCO INTL ATIS  
 113.7 115.8 118.85  
 SAN FRANCISCO TOWER  
 120.5 269.1  
 SAN CARLOS ATIS  
 125.9  
 SAN CARLOS TOWER \*  
 119.0 326.2  
 PALO ALTO ATIS  
 135.275  
 PALO ALTO TOWER \*  
 118.6  
 MOFFETT FEDERAL AFLD ATIS  
 124.175 283.0  
 MOFFETT TOWER \*  
 119.55 259.65  
 NORMAN Y MINETA  
 SAN JOSE INTL ATIS  
 126.95  
 SAN JOSE TOWER \*  
 124.0 257.6  
 REID-HILLVIEW ATIS  
 125.2  
 REID-HILLVIEW TOWER \*  
 119.8 RWY 13L/31R  
 126.1 RWY 13R/31L



SW-2. 30 MAR 2017 to 27 APR 2017

SW-2. 30 MAR 2017 to 27 APR 2017

NOTE: SACRAMENTO Transition to be used only when assigned by ATC.

NOTE: Chart not to scale.

(NARRATIVE ON FOLLOWING PAGE)

# POINT REYES TWO ARRIVAL

SAN FRANCISCO, CALIFORNIA