

WAAS CH <b>82021</b> W25A	APP CRS <b>249°</b>	Rwy Idg TDZE Apt Elev	<b>6000</b> <b>1038</b> <b>1062</b>
---------------------------------	------------------------	-----------------------------	---

# RNAV (GPS) RWY 25

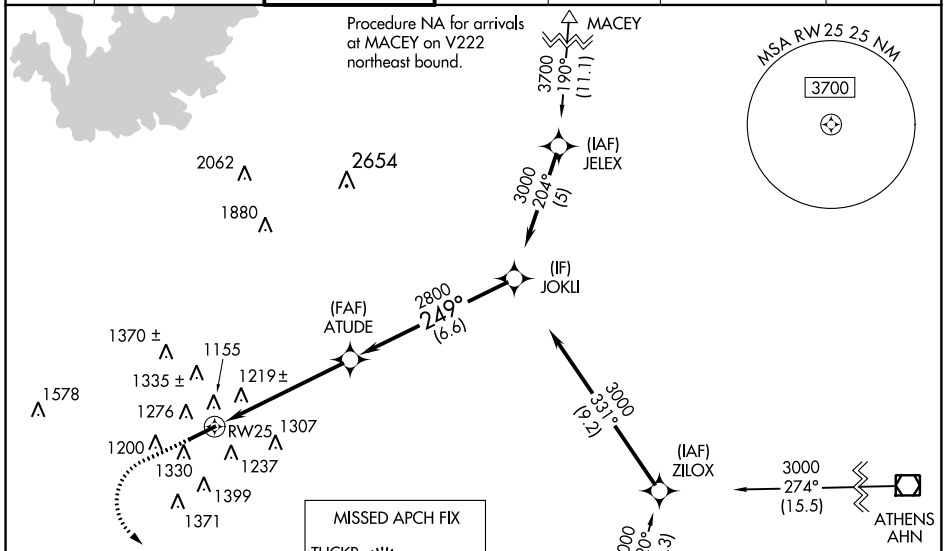
LAWRENCEVILLE/GWINNETT COUNTY-BRISCOE FIELD (LZU)

▼ Baro-VNAV NA when using Winder altimeter setting. For uncompensated Baro-VNAV systems, LNAV/VNAV NA below -17°C (2°F) or above 54°C (130°F). DME/DME RNP-0.3 NA. When local altimeter setting not received, use Winder altimeter setting and increase all DA 51 feet and all MDA 60 feet; increase LNAV/VNAV all Cats, LNAV Cat C/D and Circling Cat C/D visibility ¼ mile. For inoperative MALSRS, increase LNAV Cat C/D visibility to 1¾ mile. For inoperative MALSRS when using Winder altimeter setting; increase LNAV/VNAV all Cats visibility to 1¾ mile and LNAV Cat C/D visibility to 1¾ mile.

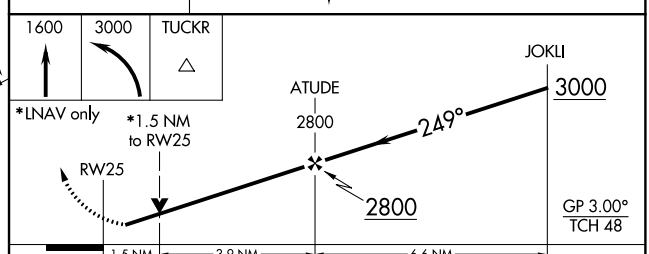
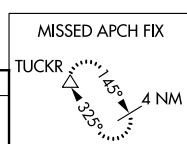
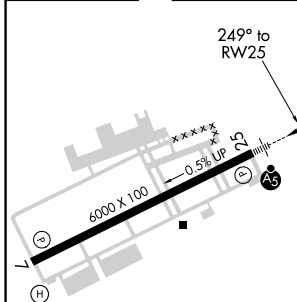
MALSRS

MISSED APPROACH:  
Climb to 1600 then climbing left turn to 3000 direct TUCKR and hold.

ATIS <b>132.275</b>	ATLANTA APP CON <b>126.975 239.275</b>	GWINNETT TOWER * <b>124.1</b> (CTAF)	GND CON <b>121.8</b>	CLNC DEL <b>121.8</b>	ATLANTA CLNC DEL <b>134.0</b> (When tower closed)	UNICOM <b>123.05</b>
------------------------	---	---	-------------------------	--------------------------	---	-------------------------



ELEV 1062	TDZE 1038
-----------	-----------



CATEGORY	A	B	C	D
LPV DA		1238-½	200 (200-½)	
LNAV/VNAV DA		1544-1¼	506 (500-1¼)	
LNAV MDA	1540-½	502 (500-½)	1540-1	502 (500-1)
CIRCLING	1640-1	578 (600-1)	1640-1½ 578 (600-1½)	1700-2 638 (700-2)

SE-4, 30 MAR 2017 to 27 APR 2017

SE-4, 30 MAR 2017 to 27 APR 2017