

VOR/DME PDK <b>116.6</b> Chan <b>113</b>	APP CRS <b>075°</b>	Rwy Idg <b>6000</b> THRE <b>1061</b> Apt Elev <b>1062</b>
--	------------------------	--

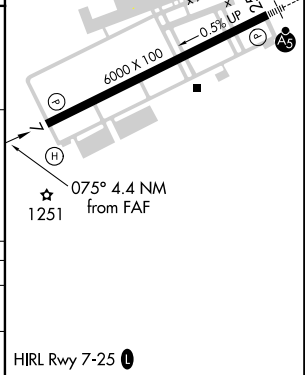
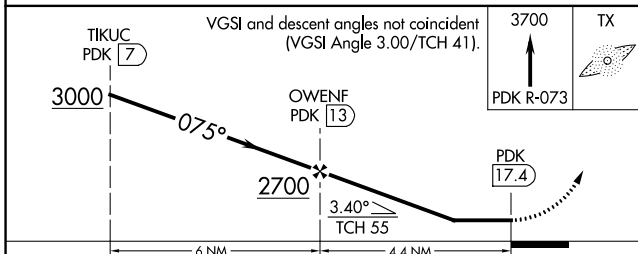
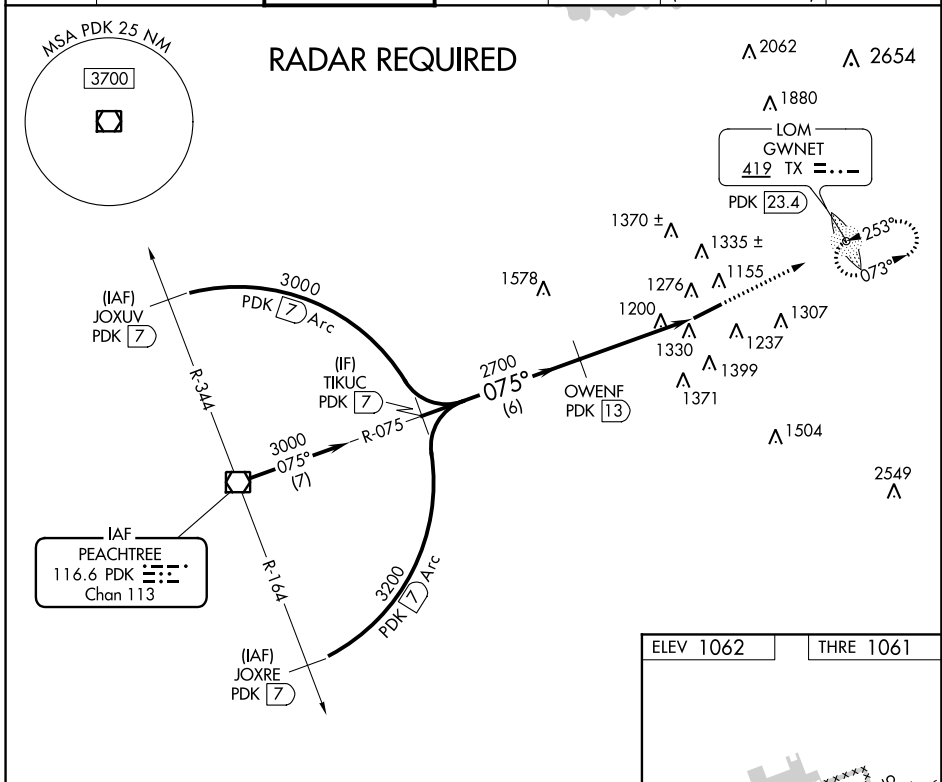
LAWRENCEVILLE/GWINNETT COUNTY-BRISCOE FIELD (LZU)

# VOR/DME RWY 7

**▼** When VGSI inop, Straight-in/Circling Rwy 7 procedure NA at night.  
**▲** Helicopter visibility reduction below 1SM NA. When local altimeter setting not received, use Winder altimeter setting and increase all MDA 60 feet. Increase S-7 and Circling Cat C visibility 1/8 mile, and Circling Cat D 1/4 mile.

MISSED APPROACH: Climb to 3700 on PDK VOR/DME R-073 to GWNENT/PDK 23.4 DME and hold, continue climb-in-hold to 3700.

ATIS <b>132.275</b>	ATLANTA APP CON <b>126.975 239.275</b>	GWINNETT TOWER ★ <b>124.1</b> (CTAF) <b>0</b>	GND CON <b>121.8</b>	CLNC DEL <b>121.8</b>	ATLANTA CLNC DEL <b>134.0</b> (When tower closed)	UNICOM <b>123.05</b>
------------------------	---	--	-------------------------	--------------------------	---	-------------------------



CATEGORY	A	B	C	D
S-7	1660-1	599 (600-1)	1660-1 <sup>3</sup> / <sub>4</sub>	599 (600-1 <sup>3</sup> / <sub>4</sub> )
CIRCLING	1660-1	598 (600-1)	1660-1 <sup>3</sup> / <sub>4</sub> 598 (600-1 <sup>3</sup> / <sub>4</sub> )	1700-2 638 (700-2)

# VOR/DME RWY 7

SE-4, 30 MAR 2017 to 27 APR 2017

SE-4, 30 MAR 2017 to 27 APR 2017