

APP CRS 083°	Rwy Idg 4900
	TDZE 634
	Apt Elev 634

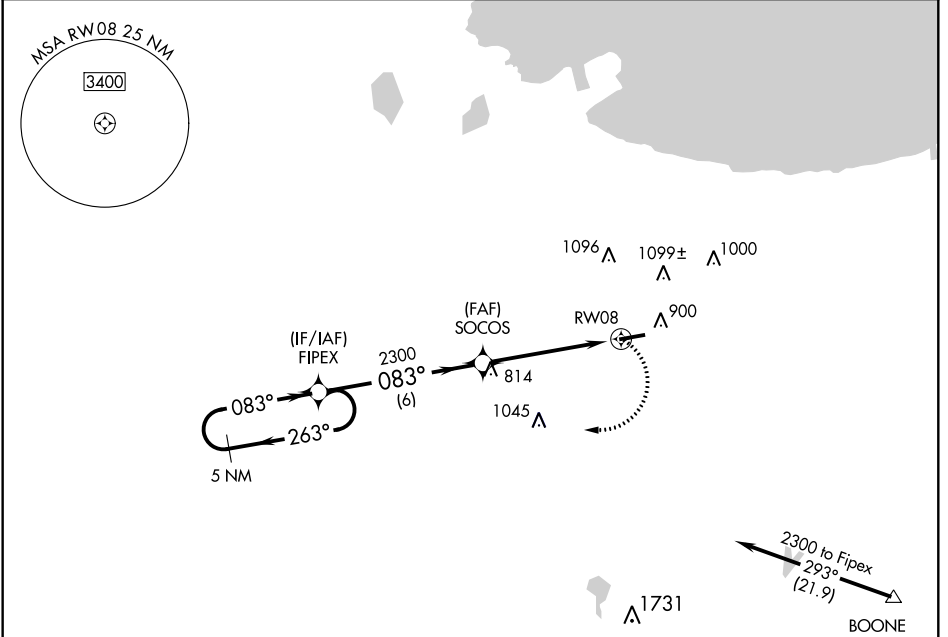
RNAV (GPS) RWY 8
GRIFFITH-MERRILLVILLE (Ø5C)

⚠ DME/DME RNP -0.3 NA. Obtain local altimeter setting on CTAF; when not received use Chicago Midway Intl altimeter setting and increase all MDAs 60 feet. Visibility reduction by helicopters NA.

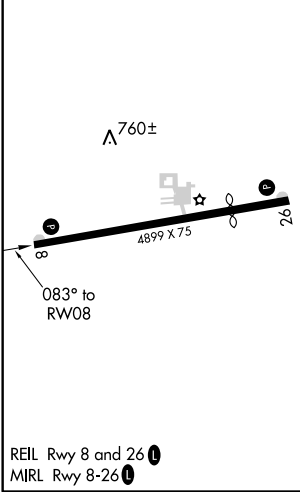
⚠ NA

MISSED APPROACH: Climbing right turn to 2300 direct FIPEX and hold.

CHICAGO APP CON 133.1 285.6	UNICOM 123.0 (CTAF) 0
---------------------------------------	---------------------------------



ELEV 634	TDZE 634
----------	----------



Procedure NA for arrivals at BOONE via V422 southeastbound.

5 NM Holding Pattern	VGSI and descent angles not coincident (VGSI Angle 3.50/TCH 44).	2300	FIPEX	
CATEGORY	A	B	C	D
LNNAV MDA	1080-1	446 (500-1)	NA	
CIRCLING	1200-1	566 (600-1)	NA	

EC-2. 30 MAR 2017 to 27 APR 2017

EC-2. 30 MAR 2017 to 27 APR 2017