

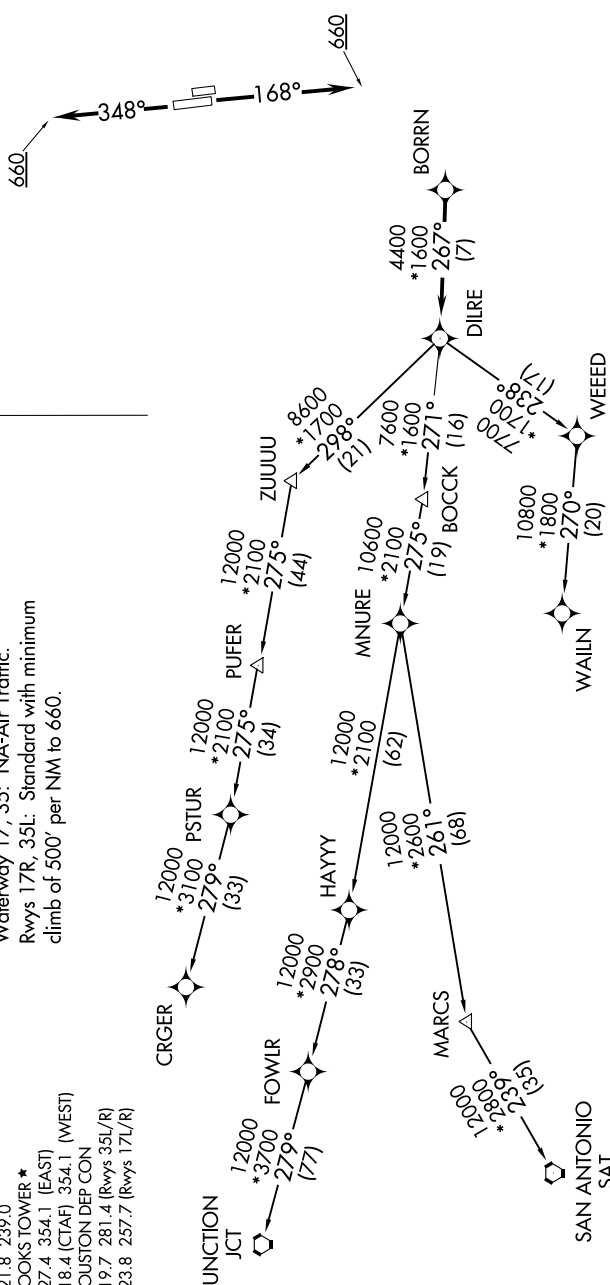
BORRN TWO DEPARTURE (RNAV)

HOUSTON, TEXAS

TOP ALTITUDE:
4000

TAKEOFF MINIMUMS
 Rwy 17L, 35R: NA-Environmental.
 Waterway 17, 35: NA-Air Traffic.
 Rwy 17R, 35L: Standard with minimum
 climb of 500' per NM to 660.

- ATIS 128.375
- CLNC DEL 119.45
- GND CON 121.8 239.0
- HOOKS TOWER * 127.4 354.1 (EAST)
- 118.4 (CTAF) 354.1 (WEST)
- HOUSTON DEP CON 119.7 281.4 (Rwys 35L/R)
- 123.8 257.7 (Rwys 17L/R)



NOTE: DME/DME/IRU or GPS required.
 NOTE: RADAR required.
 NOTE: RNAV 1.

(NARRATIVE ON FOLLOWING PAGE)
 (NOTES CONTINUED ON FOLLOWING PAGE)

NOTE: Chart not to scale.

SC-5, 30 MAR 2017 to 27 APR 2017

SC-5, 30 MAR 2017 to 27 APR 2017

BORRN TWO DEPARTURE (RNAV)

HOUSTON, TEXAS