

(CRIED8.CRIED) 16315

# CRIED EIGHT DEPARTURE

DAVID WAYNE HOOKS MEMORIAL (DWH)

SL-5457 (FAA)

HOUSTON, TEXAS

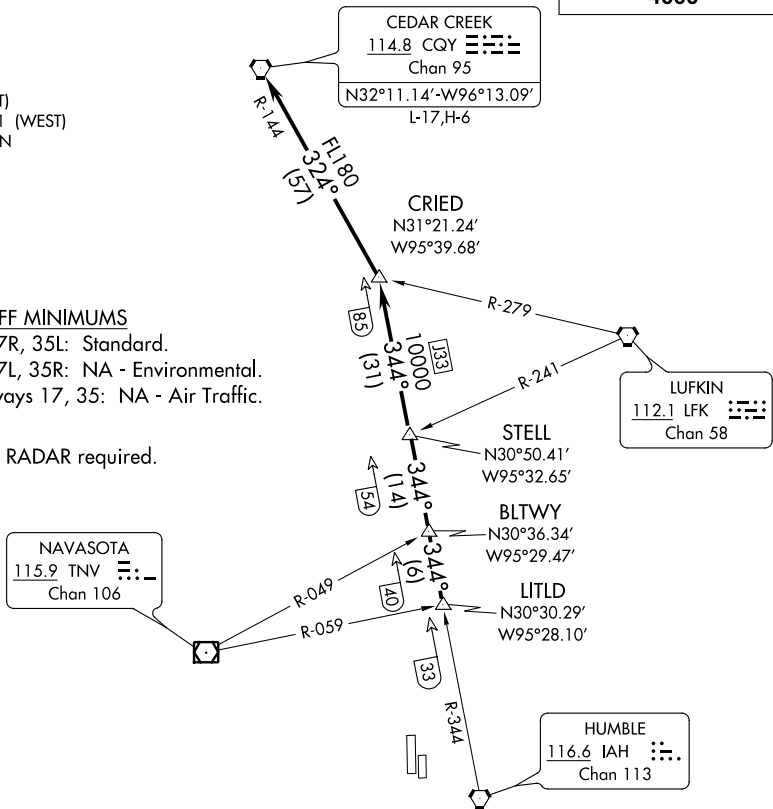
ATIS  
 128.375  
 CLNC DEL  
 119.45  
 GND CON  
 121.8 239.0  
 HOOKS TOWER ★  
 127.4 354.1 (EAST)  
 118.4 (CTAF) 354.1 (WEST)  
 HOUSTON DEP CON  
 119.7 281.4

**TOP ALTITUDE:**  
**4000**

### TAKEOFF MINIMUMS

Rwys 17R, 35L: Standard.  
 Rwys 17L, 35R: NA - Environmental.  
 Waterways 17, 35: NA - Air Traffic.

NOTE: RADAR required.



### TAKEOFF OBSTACLE NOTES

Rwy 17R: Multiple trees beginning 708' from DER, 68' left of centerline, up to 71' AGL/ 220' MSL. Multiple hangars beginning 433' from DER, 51.5' left of centerline, up to 37' AGL/182' MSL. DME antenna 653' from DER, 256' left of centerline, 13' AGL/162' MSL. Multiple trees and pole beginning 85' from DER, 294' right of centerline, up to 45' AGL/189' MSL.

Rwy 35L: Multiple trees and poles beginning 144' from DER, 32' left of centerline, up to 79' AGL/ 238' MSL. Multiple hangars and buildings beginning 85' from DER, 9' left of centerline, up to 53' AGL/202' MSL. Multiple trees, towers and poles beginning 100' from DER, 124' right of centerline, up to 93' AGL/247' MSL. Vehicle and road 315' from DER, on centerline 15' AGL/166' MSL. Building 894' from DER, 231' right of centerline, 23' AGL/173' MSL.

NOTE: Chart not to scale.

### DEPARTURE ROUTE DESCRIPTION

When entering controlled airspace, climb on assigned heading for RADAR vectors to LITLD INT, maintain 4000. Expect filed altitude 10 minutes after departure, thence . . . .  
 . . . . on IAH R-344 to STELL INT, then on IAH R-344 to CRIED INT then left turn on CQY R-144 to CQY VORTAC.

# CRIED EIGHT DEPARTURE

(CRIED8.CRIED) 10NOV16

HOUSTON, TEXAS

DAVID WAYNE HOOKS MEMORIAL (DWH)

SC-5, 30 MAR 2017 to 27 APR 2017

SC-5, 30 MAR 2017 to 27 APR 2017