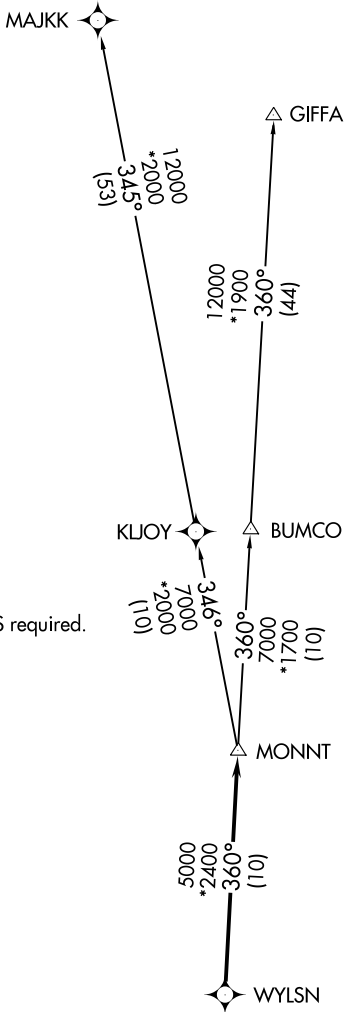


# WYLSN FOUR DEPARTURE (RNAV)

HOUSTON, TEXAS

**TOP ALTITUDE:  
4000**

ATIS  
 128.375  
 CLNC DEL  
 119.45  
 GND CON  
 121.8 239.0  
 HOOKS TOWER\*  
 127.4 354.1 (EAST)  
 118.4 (CTAF) 354.1 (WEST)  
 HOUSTON DEP CON  
 119.7 281.4



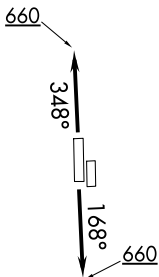
NOTE: RADAR required.  
 NOTE: DME/DME/IRU or GPS required.  
 NOTE: RNAV 1.

### TAKEOFF MINIMUMS:

Rwys 17L, 35R: NA - Environmental.

Waterway 17, 35: NA - Air Traffic.

Rwys 17R, 35L: Standard with minimum climb of 500' per NM to 660.



NOTE: Chart not to scale.

(NARRATIVE ON FOLLOWING PAGE)

# WYLSN FOUR DEPARTURE (RNAV)

HOUSTON, TEXAS