

WAAS CH <b>82406</b> W18A	APP CRS <b>182°</b>	Rwy Idg TDZE Apt Elev	<b>4001</b> <b>770</b> <b>770</b>
---------------------------------	------------------------	-----------------------------	---

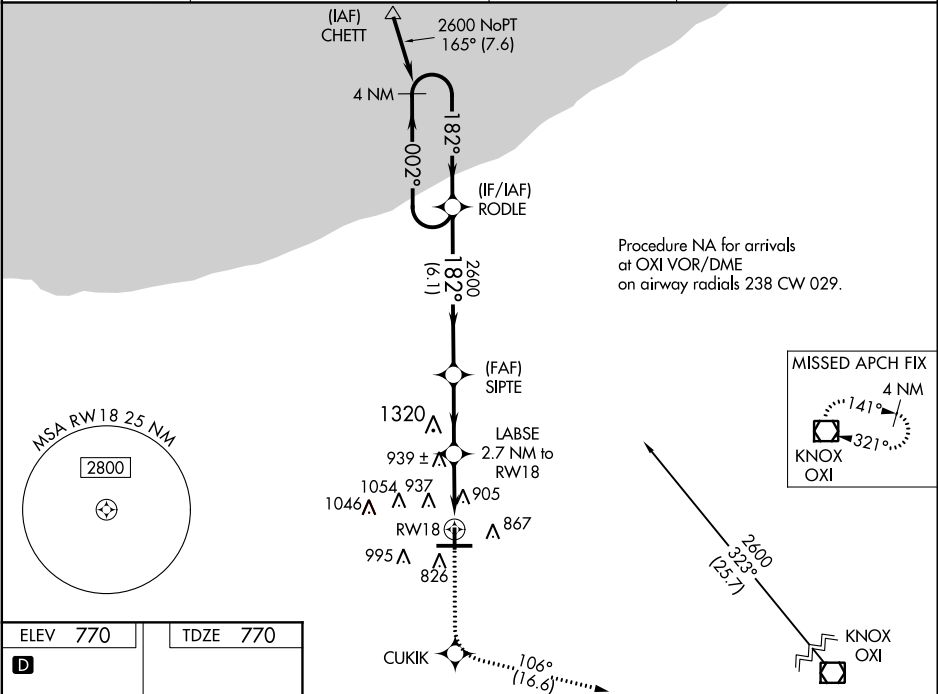
# RNAV (GPS) RWY 18

PORTER COUNTY RGNL (VPZ)

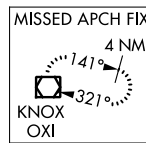
**⚠** For uncompensated Baro-VNAV systems, procedure NA below -16°C (4°F) or above 54°C (130°F). DME/DME RNP -0.3 NA. When local altimeter setting not received, use Lansing Muni altimeter setting and increase all DA 77 feet and all MDA 80 feet, and increase LPV and LNAV/VNAV all Cals visibility ¼ mile. Baro-VNAV and VDP NA when using Lansing Muni altimeter setting. Helicopter visibility reduction below ¾ SM NA.

**MISSED APPROACH:**  
Climb to 2600 direct CUKIK and on track 106° to OXI VOR/DME and hold.

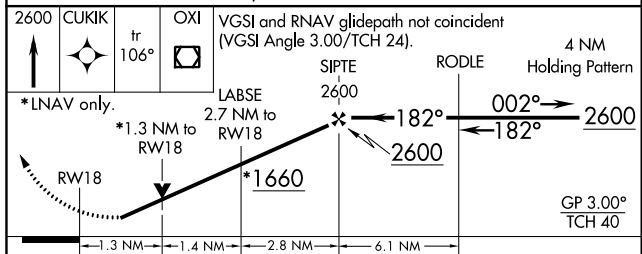
ASOS <b>125.875</b>	SOUTH BEND APP CON * <b>132.05 257.8</b>	CLNC DEL <b>120.525</b>	UNICOM <b>122.725 (CTAF) 0</b>
------------------------	---	----------------------------	-----------------------------------



Procedure NA for arrivals at OXI VOR/DME on airway radials 238 CW 029.



ELEV 770	TDZE 770
<b>D</b>	
182° to RW18	
HIRL Rwy 9-27 <b>Ⓛ</b> MIRL Rwy 18-36 <b>Ⓛ</b> REIL Rwy 9, 18 and 36 <b>Ⓛ</b>	



CATEGORY	A	B	C	D
LPV DA	1120-1¼	350 (400-1¼)	NA	NA
LNAV/VNAV DA	1233-1¾	463 (500-1¾)	NA	NA
LNAV MDA	1200-1	430 (500-1)	NA	NA
CIRCLING	1260-1 490 (500-1)	1300-1 530 (600-1)	NA	NA

EC-2. 30 MAR 2017 to 27 APR 2017

EC-2. 30 MAR 2017 to 27 APR 2017