

WAAS CH 72715 W33A	APP CRS 327°	Rwy Idg TDZE Apt Elev	4201 322 322
----------------------------------------	------------------------	-----------------------------	-----------------------------------------

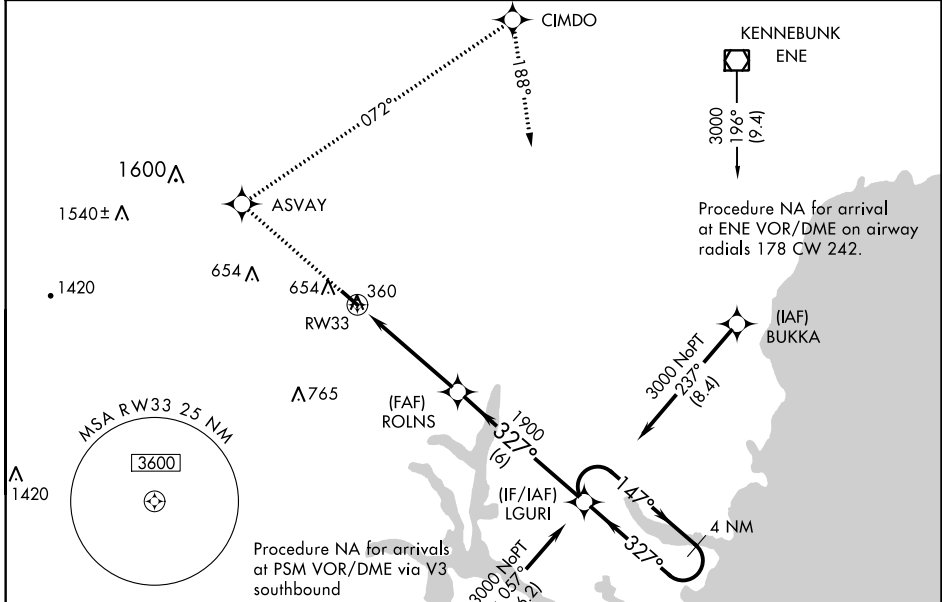
RNAV (GPS) RWY 33

SKYHAVEN (DAW)

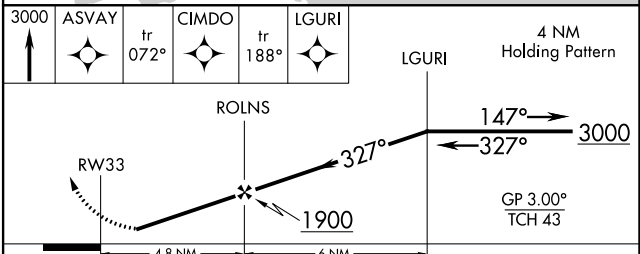
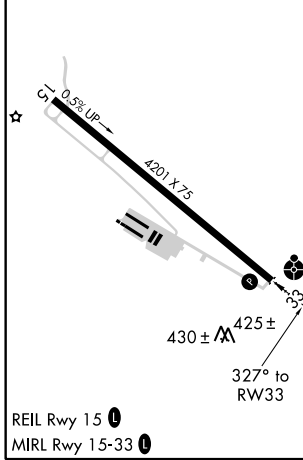
⚠ Baro-VNAV NA when using Portsmouth altimeter setting. For uncompensated Baro-VNAV systems, LNAV/VNAV NA below -15°C (5°F) or above 54°C (130°F). DME/DME RNP-0.3NA. Visibility reduction by helicopters NA. When local altimeter setting not received, use Portsmouth altimeter setting and increase all D 62 feet and all MDA 80 feet, and LPV all Cats, LNAV/VNAV all Cats, LNAV Cat C, and Circling Cat B-C ¼ mile.

ODALS
 ...
MISSED APPROACH: Climb to 3000 direct ASVAY and via track 072° to CIMDO and via track 188° to LGURI and hold.

ASOS 135.275	BOSTON APP CON 125.05 269.4	UNICOM 122.7 (CTAF)
------------------------	---------------------------------------	-------------------------------



ELEV 322	TDZE 322
----------	----------



CATEGORY	A	B	C	D
LPV DA	627-1 305 (400-1)			NA
LNAV/VNAV DA	695-1¼ 373 (400-1¼)			NA
LNAV MDA	860-1 538 (600-1)	860-1½ 538 (600-1½)		NA
CIRCLING	1020-1 698 (700-1)	1020-2 698 (700-2)		NA

NE-1, 30 MAR 2017 to 27 APR 2017

NE-1, 30 MAR 2017 to 27 APR 2017