

LUCIT ONE ARRIVAL (RNAV)

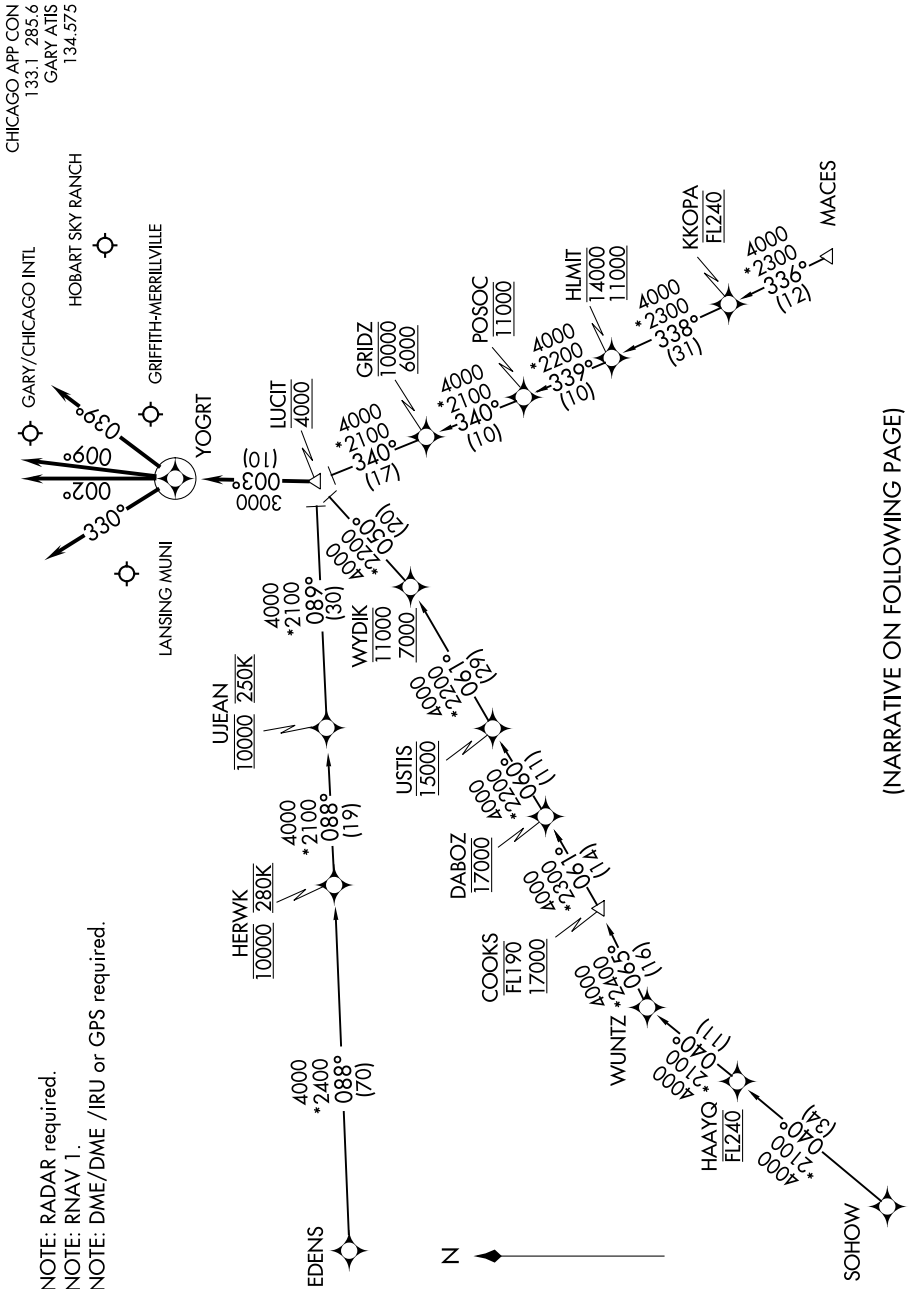
GARY, INDIANA

EC-2, 27 APR 2017 to 25 MAY 2017

(NARRATIVE ON FOLLOWING PAGE)

EC-2, 27 APR 2017 to 25 MAY 2017

NOTE: RADAR required.
NOTE: RNAV 1.
NOTE: DME/DME /IRU or GPS required.



NOTE: Chart not to scale.

LUCIT ONE ARRIVAL (RNAV)

GARY, INDIANA