


WAAS CH <b>82021</b> <b>W25A</b>	APP CRS <b>249°</b>	Rwy Idg TDZE Apt Elev	<b>6000</b> <b>1038</b> <b>1062</b>
--	------------------------	-----------------------------	---

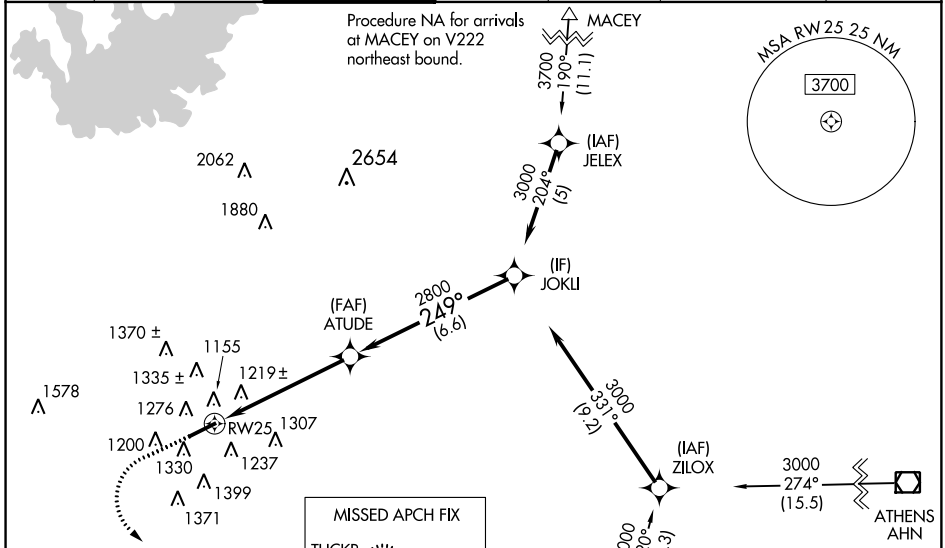
# RNAV (GPS) RWY 25

LAWRENCEVILLE/GWINNETT COUNTY-BRISCOE FIELD (LZU)

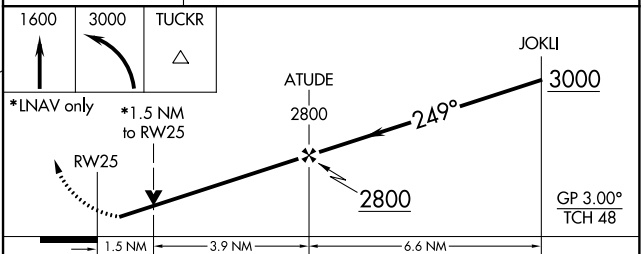
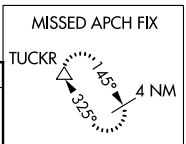
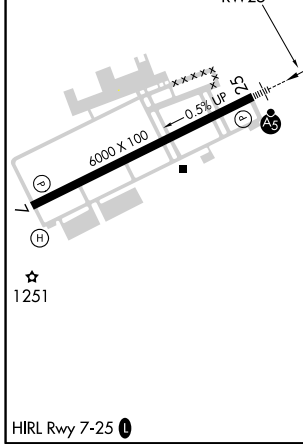
▼ Baro-VNAV NA when using Winder altimeter setting. For uncompensated Baro-VNAV systems, LNAV/VNAV NA below -17°C (2°F) or above 54°C (130°F). DME/DME RNP-0.3 NA. When local altimeter setting not received, use Winder altimeter setting and increase all DA 51 feet and all MDA 60 feet; increase LNAV/VNAV all Cats, LNAV Cat C/D and Circling Cat C/D visibility ¼ mile. For inoperative MALSRS, increase LNAV Cat C/D visibility to 1 3/8 mile. For inoperative MALSRS when using Winder altimeter setting; increase LNAV/VNAV all Cats visibility to 1 1/8 mile and LNAV Cat C/D visibility to 1 1/8 mile.

**MALSRS**  
  
**MISSED APPROACH:**  
 Climb to 1600 then climbing left turn to 3000 direct TUCKR and hold.

ATIS <b>132.275</b>	ATLANTA APP CON <b>126.975 239.275</b>	GWINNETT TOWER * <b>124.1</b> (CTAF) 	GND CON <b>121.8</b>	CLNC DEL <b>121.8</b>	ATLANTA CLNC DEL <b>134.0</b> (When tower closed)	UNICOM <b>123.05</b>
------------------------	---	---	-------------------------	--------------------------	---	-------------------------



ELEV 1062	TDZE 1038
-----------	-----------



CATEGORY	A	B	C	D
LPV DA		1238-1/2	200 (200-1/2)	
LNAV/VNAV DA		1544-1 1/4	506 (500-1 1/4)	
LNAV MDA	1540-1/2	502 (500-1/2)	1540-1	502 (500-1)
CIRCLING	1640-1	578 (600-1)	1640-1 1/2 578 (600-1 1/2)	1700-2 638 (700-2)

SE-4, 27 APR 2017 to 25 MAY 2017

SE-4, 27 APR 2017 to 25 MAY 2017