

WAAS CH 97621 W07A	APP CRS 069°	Rwy Idg THRE Apt Elev	6000 1061 1062
--	------------------------	-----------------------------	---

RNAV (GPS) RWY 7

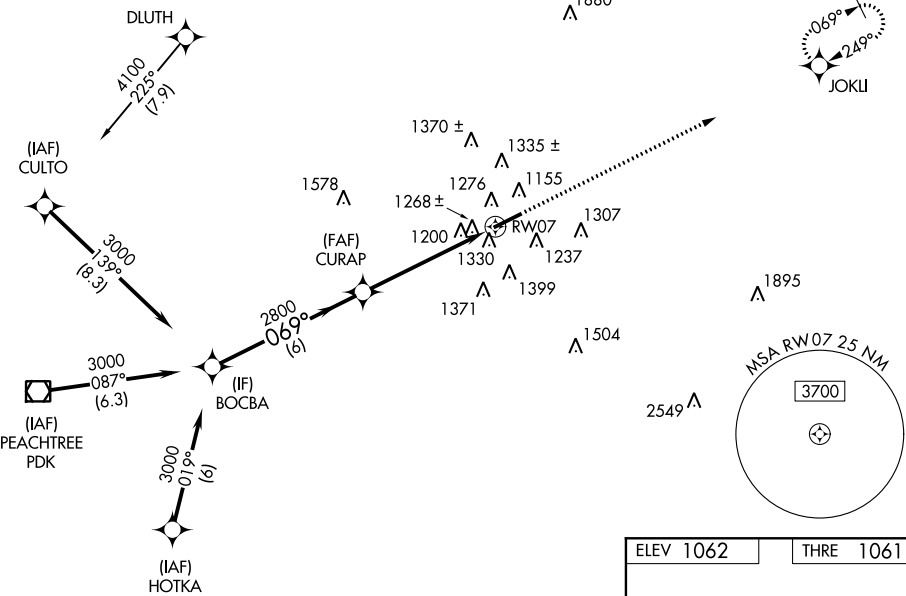
LAWRENCEVILLE/GWINNETT COUNTY-BRISCOE FIELD (LZU)

⚠ DME/DME RNP-0.3 NA. When local altimeter setting not received, use Winder altimeter setting and increase all MDA 60 feet and LNAV and Circling Cts C/D visibility 1/4 mile. Helicopter visibility reduction below 3/4 SM NA.

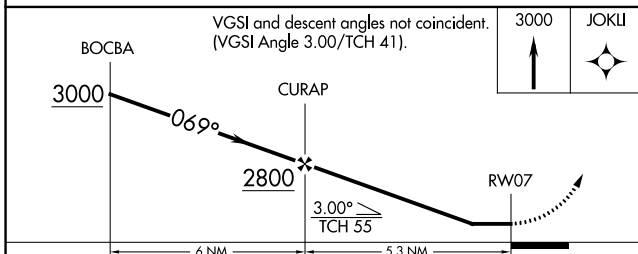
MISSED APPROACH: Climb to 3000 direct JOKLI and hold.

ATIS 132.275	ATLANTA APP CON 126.975 239.275	GWINNETT TOWER ★ 124.1 (CTAF) 0	GND CON 121.8	CLNC DEL 121.8	ATLANTA CLNC DEL 134.0 (When tower closed)	UNICOM 123.05
------------------------	---	---	-------------------------	--------------------------	---	-------------------------

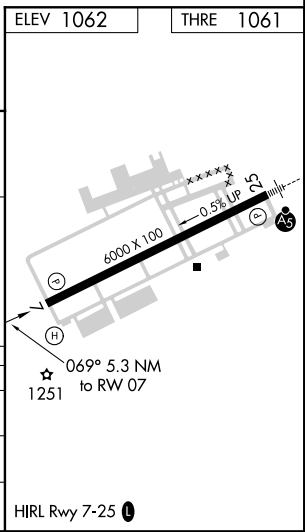
Procedure NA for arrivals on PDK VOR/DME radials 357 CW 177.



RADAR required for arrivals at HOTKA.



CATEGORY	A	B	C	D
LP MDA	1520-1	459 (500-1)	1520-1 3/8	459 (500-1 3/8)
LNAV MDA	1580-1	519 (600-1)	1580-1 3/8	519 (600-1 3/8)
CIRCLING	1640-1	578 (600-1)	1640-1 1/2 578 (600-1 1/2)	1700-2 638 (700-2)



SE-4, 27 APR 2017 to 25 MAY 2017

SE-4, 27 APR 2017 to 25 MAY 2017

RNAV (GPS) RWY 7