

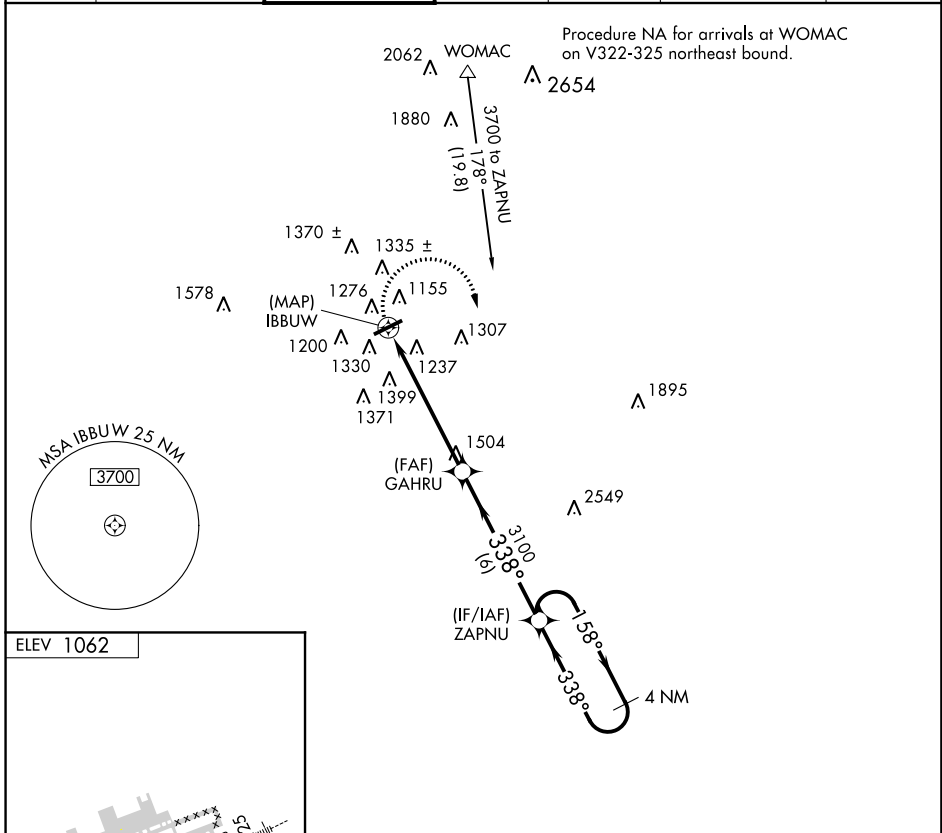
APP CRS 338°	Rwy Idg TDZE Apt Elev	N/A N/A 1062
------------------------	-----------------------------	---

RNAV (GPS)-A

LAWRENCEVILLE/GWINNETT COUNTY-BRISCOE FIELD (LZU)

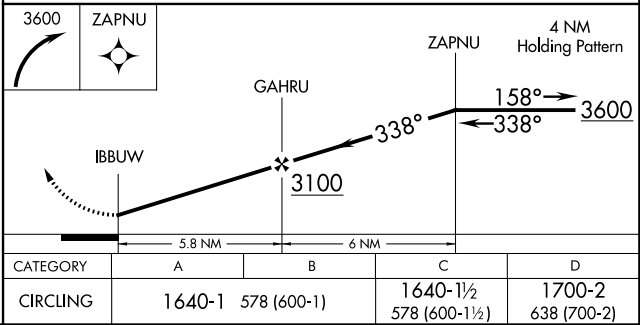
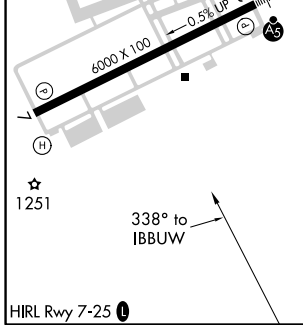
<p>▼ DME/DME RNP-0.3 NA. When local altimeter setting not received, use Winder altimeter setting and increase all MDAs 60 feet; increase Cat C and D visibility ¼ mile.</p>	<p>MISSED APPROACH: Climbing right turn to 3600 direct ZAPNU and hold.</p>
--	---

<p>ATIS 132.275</p>	<p>ATLANTA APP CON 126.975 239.275</p>	<p>GWINNETT TOWER ★ 124.1 (CTAF) 0</p>	<p>GND CON 121.8</p>	<p>CLNC DEL 121.8</p>	<p>ATLANTA CLNC DEL 134.0 (When tower closed)</p>	<p>UNICOM 123.05</p>
--------------------------------	---	---	---------------------------------	----------------------------------	--	---------------------------------



SE-4, 27 APR 2017 to 25 MAY 2017

SE-4, 27 APR 2017 to 25 MAY 2017



CATEGORY	A	B	C	D
CIRCLING	1640-1	578 (600-1)	1640-1½ 578 (600-1½)	1700-2 638 (700-2)

RNAV (GPS)-A