

APP CRS 263°	Rwy Idg 3780
	TDZE 632
	Apt Elev 634

RNAV (GPS) RWY 26

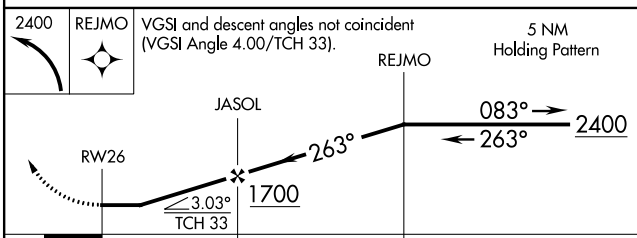
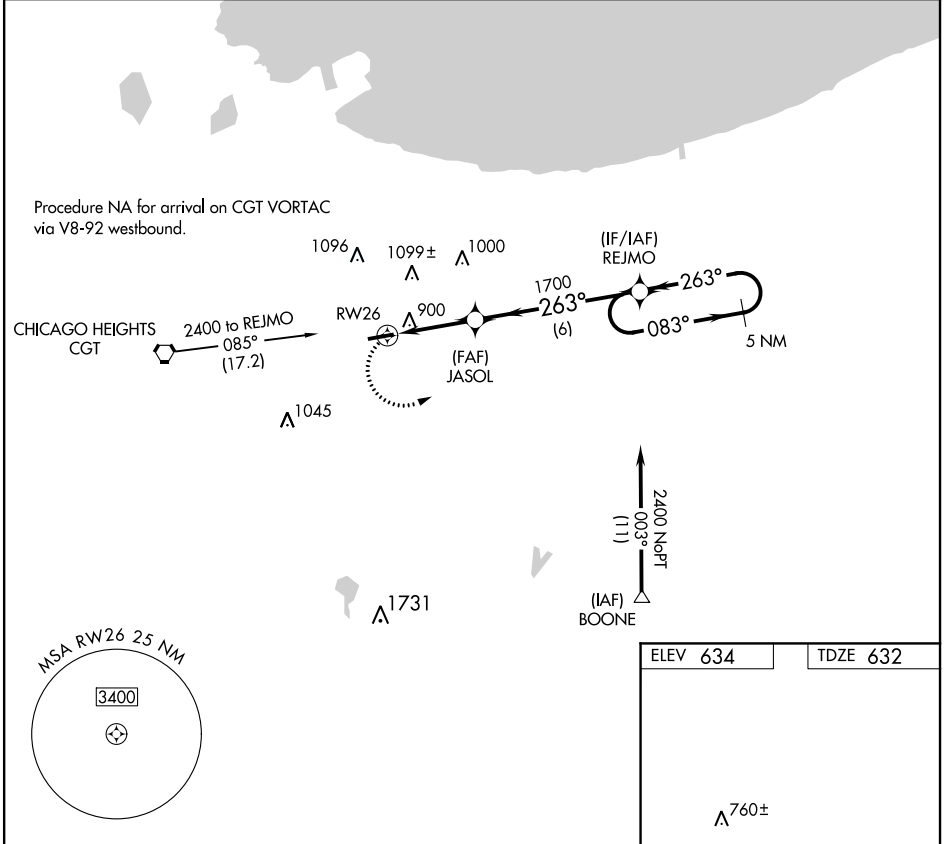
GRIFFITH-MERRILLVILLE (Ø5C)

▽ DME/DME RNP -0.3 NA. Obtain local altimeter setting on CTAF; when not received use Chicago Midway Inl altimeter setting and increase all MDAs 60 feet. Visibility reduction by helicopters NA.

▲ NA

MISSED APPROACH: Climbing left turn to 2400 direct REJMO and hold.

CHICAGO APP CON 133.1 285.6	UNICOM 123.0 (CTAF) 0
---------------------------------------	---------------------------------



ELEV 634	TDZE 632
----------	----------

760±

4899 X 75

263° to RWY 26

REIL Rwy 8 and 26 0
MIRL Rwy 8-26 0

CATEGORY	A	B	C	D
LNAV MDA	1160-1	528 (600-1)		NA
CIRCLING	1200-1	566 (600-1)		NA

EC-2, 27 APR 2017 to 25 MAY 2017

EC-2, 27 APR 2017 to 25 MAY 2017