

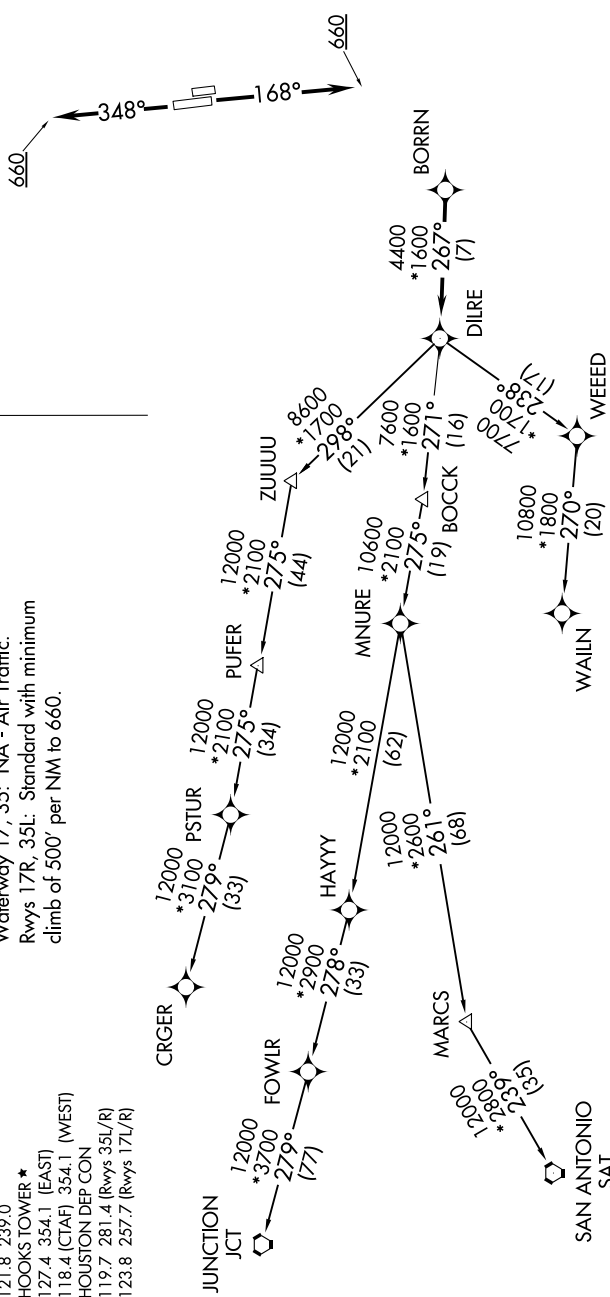
# BORRN TWO DEPARTURE (RNAV)

HOUSTON, TEXAS

**TOP ALTITUDE:**  
4000

**TAKEOFF MINIMUMS**  
 Rwy 17L, 35R: NA - Environmental.  
 Waterway 17, 35: NA - Air Traffic.  
 Rwy 17R, 35L: Standard with minimum  
 climb of 500' per NM to 660.

- ATIS 128.375  
 CLNC DEL 119.45  
 GND CON 121.8 239.0  
 HOOKS TOWER \* 127.4 354.1 (EAST)  
 118.4 (CTAF) 354.1 (WEST)  
 HOUSTON DEP CON 119.7 281.4 (Rwys 35L/R)  
 123.8 257.7 (Rwys 17L/R)



NOTE: DME/DME/IRU or GPS required.  
 NOTE: RADAR required.  
 NOTE: RNAV 1.

(NARRATIVE ON FOLLOWING PAGE)  
 (NOTES CONTINUED ON FOLLOWING PAGE)

NOTE: Chart not to scale.

SC-5, 27 APR 2017 to 25 MAY 2017

SC-5, 27 APR 2017 to 25 MAY 2017

# BORRN TWO DEPARTURE (RNAV)

(BORRN2.BORRN) 05MAR15

HOUSTON, TEXAS

DAVID WAYNE HOOKS MEMORIAL (DWH)