

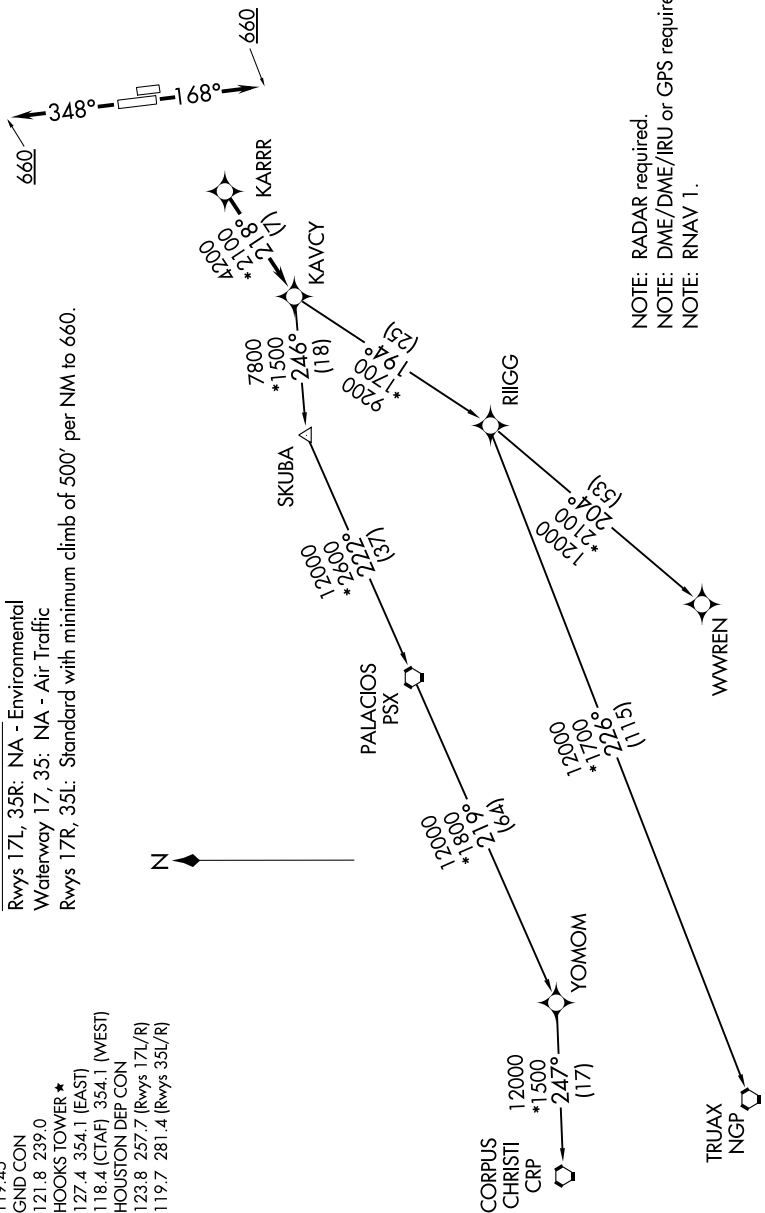
# KARR THREE DEPARTURE (RNAV)

**TOP ALTITUDE:**  
4000

### TAKEOFF MINIMUMS

Rwys 17L, 35R: NA - Environmental  
Waterway 17, 35: NA - Air Traffic  
Rwys 17R, 35L: Standard with minimum climb of 500' per NM to 660.

- ATIS 128.375
- CINC DEL 119.45
- GND CON 121.8 239.0
- HOOKS TOWER \* 127.4 354.1 (EAST)
- 118.4 (CTAF) 354.1 (WEST)
- HOUSTON DEP CON 123.8 257.7 (Rwys 17L/R)
- 119.7 281.4 (Rwys 35L/R)



NOTE: RADAR required.  
NOTE: DME/DME/IRU or GPS required.  
NOTE: RNAV 1.

NOTE: Chart not to scale.

(NARRATIVE ON FOLLOWING PAGE)  
(NOTES CONTINUED ON FOLLOWING PAGE)