

LOC/DME I-HEW 110.5 Chan 42	APP CRS 168°	Rwy Idg TDZE 152 Apt Elev 152	6002
---	------------------------	---	-------------

LOC RWY 17R

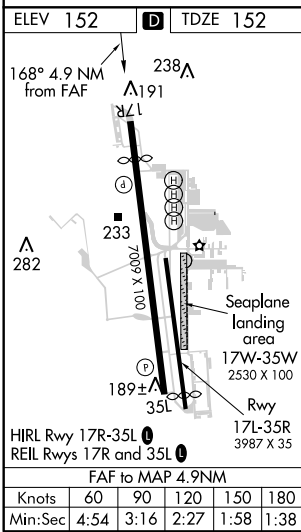
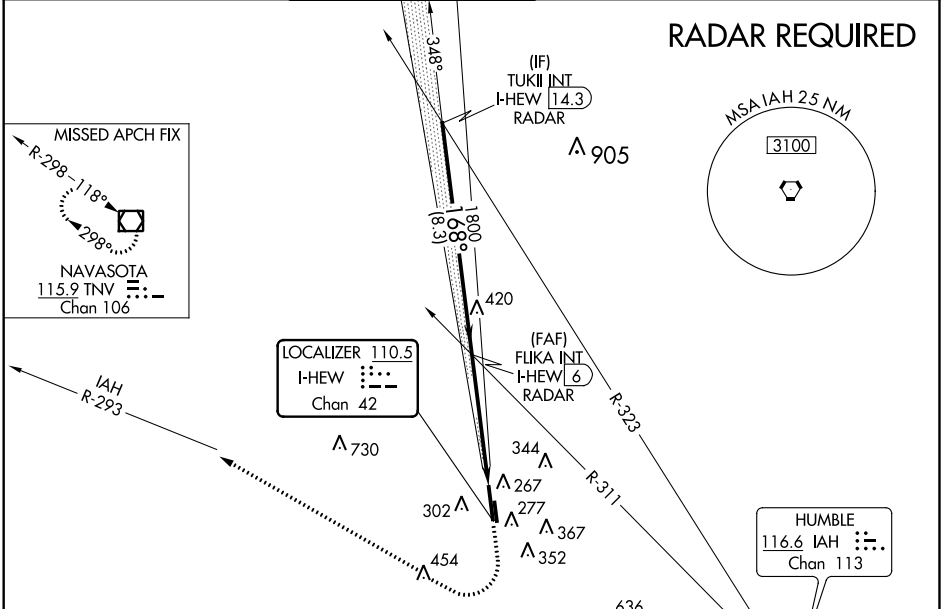
DAVID WAYNE HOOKS MEMORIAL (DWH)

NA When local altimeter setting not received, use George Bush Intercontinental/Houston altimeter setting and increase all MDA 40 feet; increase S-LOC 17R Cats C/D visibility 1/8 mile. Helicopter visibility reduction below 1 SM NA. Night landing: Rwy 35R NA.

MISSED APPROACH: Climb to 1200 then climbing right turn to 2000 on heading 325° and IAH VORTAC R-293 to TNV VOR/DME and hold.

ATIS 128.375	HOUSTON APP CON 119.7 281.4	HOOKS TOWER* 127.4 354.1 EAST 118.4 (CTAF) 354.1 WEST	GND CON 121.8 239.0	CLNC DEL 119.45	UNICOM 122.95
------------------------	---------------------------------------	---	-------------------------------	---------------------------	-------------------------

RADAR REQUIRED



TUKII INT I-HEW 14.3 RADAR	1200	2000	IAH R-293	TNV
2000	↑	hdg 325°	IAH R-293	☐
FLIKA INT I-HEW 6 RADAR	Descent angle NA.			
168°	I-HEW 1.1			
1800	8.3 NM 4.9 NM			
CATEGORY	A	B	C	D
S-LOC 17R	640-1	488 (500-1)	640-1 3/8	488 (500-1 3/8)
C CIRCLING	640-1 488 (500-1)	660-1 508 (600-1)	660-1 1/2 508 (600-1 1/2)	760-2 608 (700-2)

SC-5, 27 APR 2017 to 25 MAY 2017

SC-5, 27 APR 2017 to 25 MAY 2017