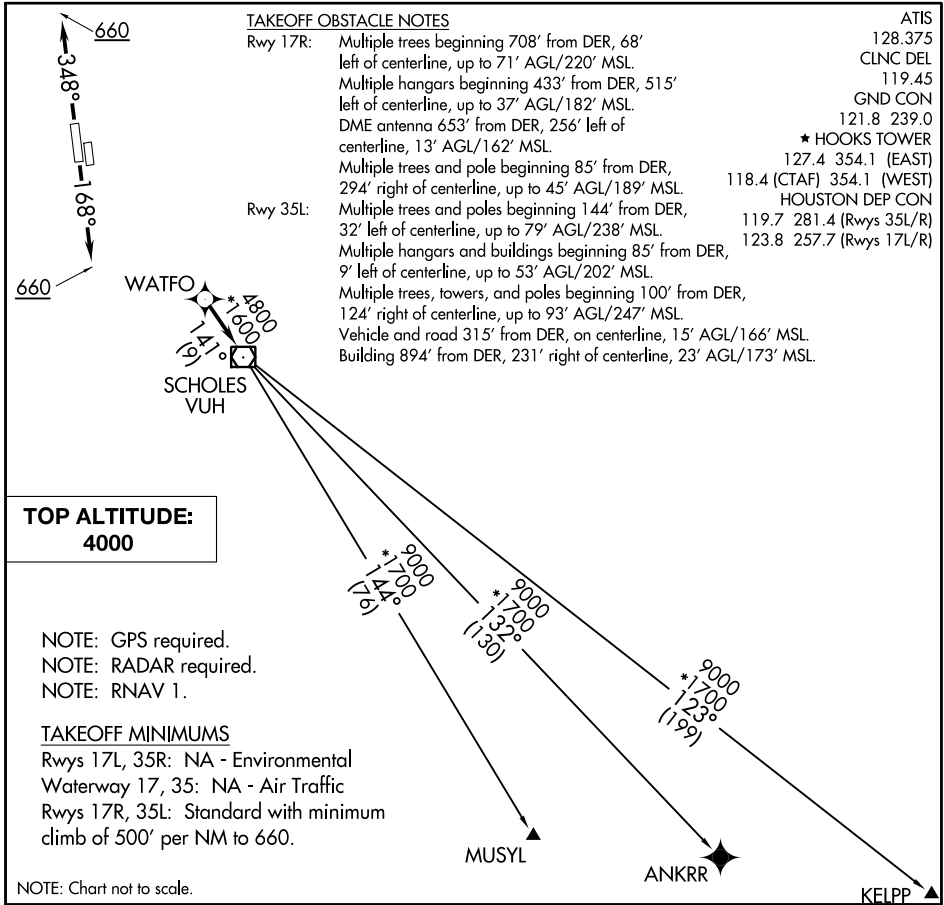


WATFO THREE DEPARTURE (RNAV)



SC-5, 27 APR 2017 to 25 MAY 2017

SC-5, 27 APR 2017 to 25 MAY 2017

DEPARTURE ROUTE DESCRIPTION

TAKEOFF RWY 17R: Climb on heading 168° to 660, expect RADAR vectors to WATFO, thence

TAKEOFF RWY 35L: Climb on heading 348° to 660, expect RADAR vectors to WATFO, thence

. . . . on track 141° to VUH VOR/DME, then on (transition). Maintain 4000 or as assigned by ATC. Expect filed altitude 10 minutes after departure.

ANKRR TRANSITION (WATFO3.ANKRR):

KELPP TRANSITION (WATFO3.KELPP):

MUSYL TRANSITION (WATFO3.MUSYL):