

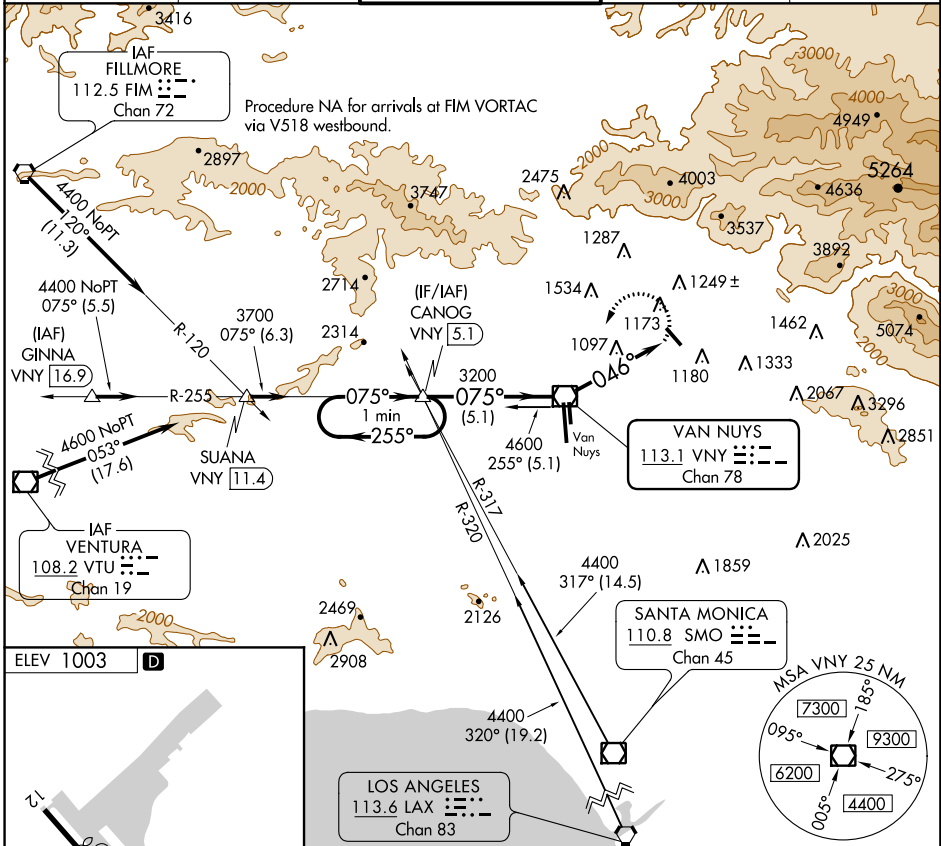
VOR/DME VNY <b>113.1</b> Chan 78	APP CRS <b>046°</b>	Rwy Idg TDZE Apt Elev <b>1003</b>	N/A N/A 1003
--	------------------------	--	--------------------

**VOR-A**  
WHITEMAN (WHP)

**⚠** When control tower closed, use Burbank altimeter setting.

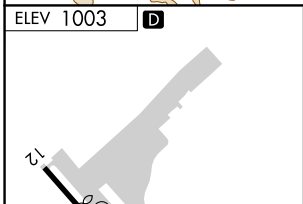
**⚠** MISSED APPROACH: Climbing left turn to 3700 direct VNY VOR/DME then via VNY VOR/DME R-255 to CANOG INT/ VNY 5.1 DME and hold.

ATIS <b>132.1</b>	SOCAL APP CON <b>134.2 338.2</b>	WHITEMAN TOWER * <b>135.0</b> (CTAF)	GND CON <b>125.0</b>	UNICOM <b>122.95</b>
----------------------	-------------------------------------	---	-------------------------	-------------------------

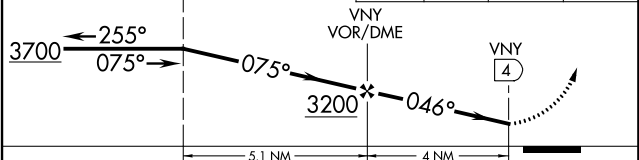


SW-3, 27 APR 2017 to 25 MAY 2017

SW-3, 27 APR 2017 to 25 MAY 2017



One Minute Holding Pattern	CANOG INT VNY 5.1	3700 VNY	VNY R-255	CANOG
----------------------------	-------------------	----------	-----------	-------



FAF to MAP 4 NM					
Knots	60	90	120	150	180
Min:Sec	4:00	2:40	2:00	1:36	1:20

CATEGORY	A	B	C	D
CIRCLING	1840-1 837 (900-1)	1840-1¼ 837 (900-1¼)	1840-2½ 837 (900-2½)	NA