

LOC I-SHD 109.5	APP CRS 047°	Rwy Idg 6002	TDZE 1184
		Apt Elev 1201	

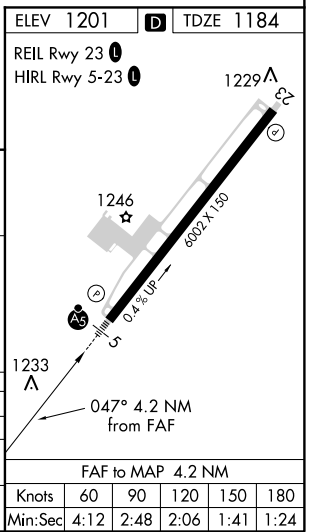
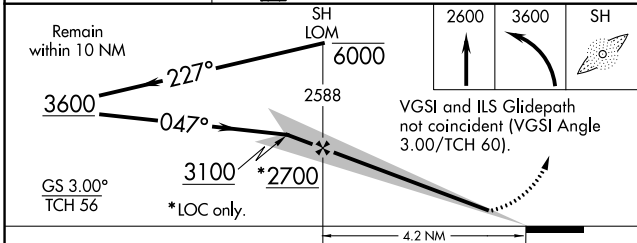
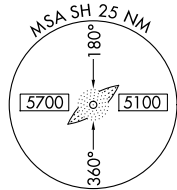
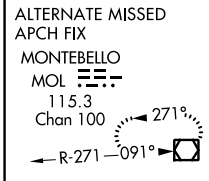
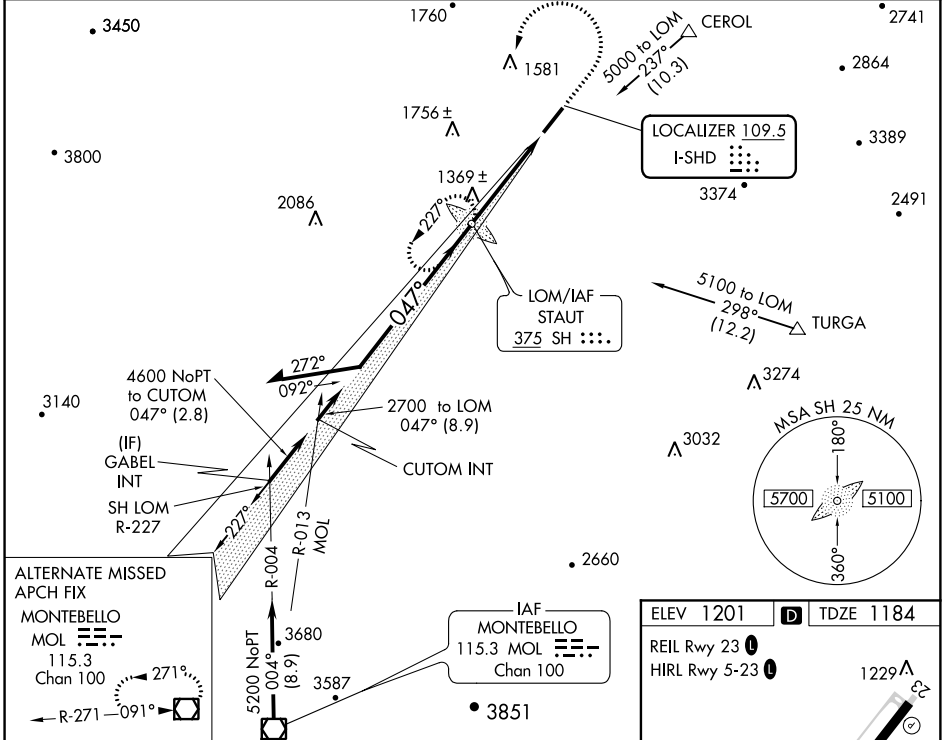
AL-5369 (FAA)

ILS or LOC RWY 5
SHENANDOAH VALLEY RGNL (SHD)

ADF Required. Autopilot coupled approach NA below 1494 feet. When local altimeter setting not received, use Charlottesville altimeter setting and increase all DA 130 feet, all MDA 140 feet. Increase ILS visibility 1/4 mile all Cats, LOC visibility Cat C/D 1/4 mile and Circling Cat D 1/2 mile. For inoperative MALSRL when using Charlottesville **23°C/-9°F** altimeter setting, increase ILS visibility to 1/4 miles.

MALSRL MISSED APPROACH: Climb to 2600 then climbing left turn to 3600 direct SH LOM and hold.

AWOS-3 124.925	POTOMAC APP CON 132.85 323.125	CLNC DEL 118.35	UNICOM 123.0 (CTAF)
--------------------------	--	---------------------------	-------------------------------



CATEGORY	A	B	C	D
S-ILS 5		1384-1/2	200 (200-1/2)	
S-LOC 5	1620-1/2	436 (500-1/2)	1620-3/4 436 (500-3/4)	1620-1 436 (500-1)
CIRCLING	1620-1 419 (500-1)	1660-1 459 (500-1)	1660-1 1/2 459 (500-1 1/2)	1820-2 619 (700-2)

NE-3, 25 MAY 2017 to 22 JUN 2017

NE-3, 25 MAY 2017 to 22 JUN 2017