


WAAS CH <b>81913</b> <b>W05A</b>	APP CRS <b>047°</b>	Rwy Idg TDZE Apt Elev	<b>6002</b> <b>1184</b> <b>1201</b>
--	------------------------	-----------------------------	---

AL-5369 (FAA)

# RNAV (GPS) RWY 5

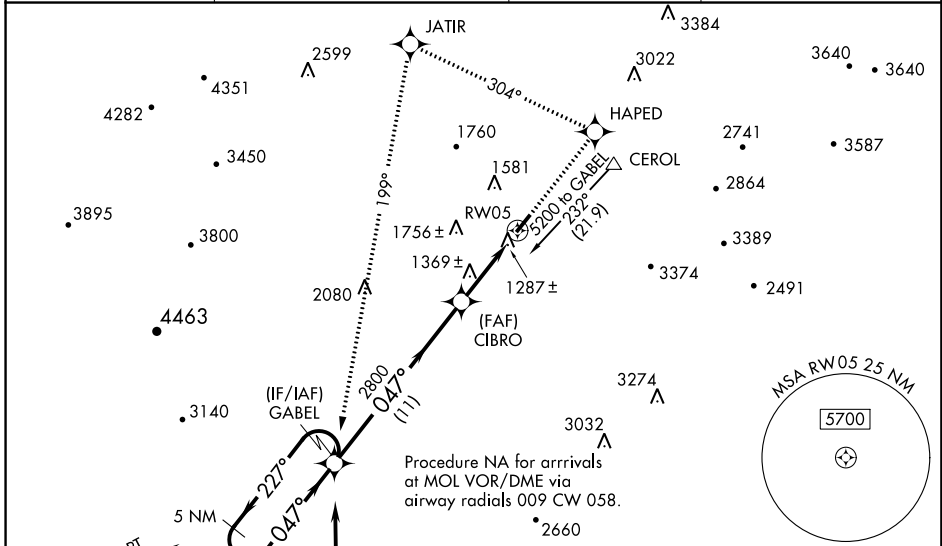
SHENANDOAH VALLEY RGNL (SHD)

**⚠** For inoperative MALSR when using Charlottesville altimeter setting, increase LPV visibility to 1/2 mile. For uncompensated Baro-VNAV systems, LNAV/VNAV NA below -17°C (2°F) or above 46°C (114°F). DME/DME RNP-0.3 NA. Baro-VNAV and VDP NA when using Charlottesville altimeter setting. When local altimeter setting not received, use Charlottesville altimeter setting and increase all DA 130 feet, all MDA 140 feet. Increase LPV all Cats visibility 1/2 mile, LNAV/VNAV all Cats 1/2 mile, LNAV Cat C/D 1/4 mile and Circling Cat D 1/2 mile.

**MALSR**  
 MISSED APPROACH: Climb to 5200 direct HAPED and left turn via track 304° to JATIR and left turn via track 199° to GABEL and hold.

**Ⓜ** 23°C/-9°F

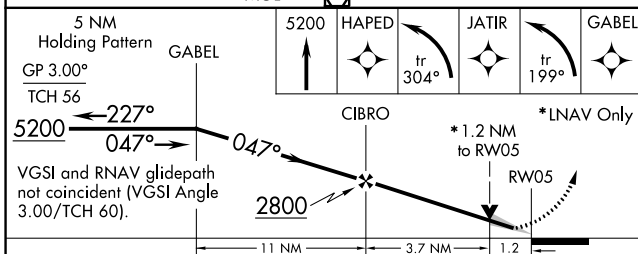
AWOS-3 <b>124.925</b>	POTOMAC APP CON <b>132.85 323.125</b>	CLNC DEL <b>118.35</b>	UNICOM <b>123.0 (CTAF)</b>
--------------------------	--	---------------------------	-------------------------------



NE-3, 25 MAY 2017 to 22 JUN 2017

NE-3, 25 MAY 2017 to 22 JUN 2017

(IAF) BOOME 5200 NoPT 071° (17.1)	(IF/IAF) GABEL 5200 047° (11)	(IAF) MONTEBELLO MOL 3587	5200 NoPT 008° (8.9)	3680	3587	3851
--	--	---------------------------------	-------------------------	------	------	------



CATEGORY	A	B	C	D
LPV DA		1384-1/2	200 (200-1/2)	
LNAV/VNAV DA		1563-3/4	379 (400-3/4)	
LNAV MDA	1620-1/2	436 (500-1/2)	1620-3/4 436 (500-3/4)	1620-1 436 (500-1)
CIRCLING	1620-1 419 (500-1)	1660-1 459 (500-1)	1660-1/2 459 (500-1/2)	1820-2 619 (700-2)

