

## LACON

**MARSHALL CO** (C75) 1 E UTC-6(-5DT) N41°01.13' W89°23.15'

585 B TPA—1585(1000) NOTAM FILE C75

**RWY 13-31:** H4003X75 (ASPH) MIRL 1.1% up SE

**RWY 13:** REIL.

**RWY 31:** PAPI(P4L)—GA 4.0° TCH 20'. Ground. Rgt tfc.

**RWY 18-36:** H2199X50 (ASPH) S-4 LIRL 0.3% up N

**RWY 18:** Road.

**SERVICE:** S4 **FUEL** 100LL **LGT** ACTIVATE MIRL Rwy 13-31; REIL Rwy 13 and PAPI Rwy 31—CTAF.

**AIRPORT REMARKS:** Attended 1400-2300Z†. Rwy 31 departures encouraged to begin right turn as soon as practical for noise abatement.

**AIRPORT MANAGER:** 309-246-2870

**WEATHER DATA SOURCES:** AWOS-3 119.425 (309) 246-3089.

**COMMUNICATIONS:** CTAF/UNICOM 122.8

**BRADFORD RCO** 123.6 122.05R 114.7T (KANKAKEE RADIO)

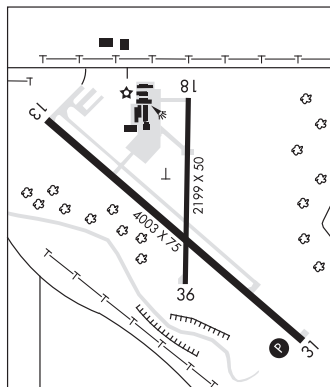
® **CHICAGO CENTER APP/DEP CON** 124.55

**RADIO AIDS TO NAVIGATION:** NOTAM FILE IKK.

**BRADFORD (H) VORTAC** 114.7 BDF Chan 94 N41°09.58' W89°35.27' 133° 12.5 NM to fld. 810/OE.

VOR portion unusable:

189°-199° blo 3,500' btn 25 and 35 NM



CHICAGO

L-27C

IAP

**LAKE IN THE HILLS** (See CHICAGO/LAKE IN THE HILLS on page 45)

**LANSING MUNI** (See CHICAGO on page 43)

**LAWRENCEVILLE-VINCENNES INTL** (LWV)(KLWV) 3 NE UTC-6(-5DT) N38°45.86' W87°36.33'

ST LOUIS

H-5E, L-27D

IAP

430 B TPA—See Remarks NOTAM FILE LWV

**RWY 18-36:** H5199X100 (ASPH) S-75, D-100, 2D-180 MIRL

**RWY 18:** REIL. PVASI(P5IL)—GA 3.0° TCH 25'.

**RWY 36:** REIL. PAPI(P4L)—GA 3.0° TCH 41'.

**RWY 09-27:** H5198X100 (ASPH) S-75, D-100, 2D-180 MIRL

**RWY 09:** REIL. PVASI(P5IL)—GA 3.0° TCH 26'.

**RWY 27:** ODALS. REIL. PAPI(P4L)—GA 3.0° TCH 26'.

**RWY 04U-22U:** 1000X200 (TURF)

**RWY 22U:** Rgt tfc.

**SERVICE:** S4 **FUEL** 100LL, JET A **LGT** MIRL Rwy 18-36 preset on low ints; to increase ints and **ACTIVATE** MIRL Rwy 09-27 and REIL Rws 09, 27, 18 and 36 and ODALS Rwy 27—CTAF.

**AIRPORT REMARKS:** Attended 1200-0400Z†. Glider activity SR-SS. Rwy 09-27 and Rwy 18-36 have left hand tfc pattern for glider acft. TPA for ultralight tfc using Rwy 04U-22U is 500' maximum. Be alert: ODALS for Rwy 27 are in operation simultaneously with REILS on Rwy 18. Rwy 09 and Rwy 18 PVASI unusable byd 8° left of centerline and byd 6° right of centerline. TPA for powered acft using Rwy 09-27 and 18-36 is 1330(900). TPA for ultralight tfc using Rwy 04U-22U is 930(500).

**AIRPORT MANAGER:** 618-943-5733

**WEATHER DATA SOURCES:** ASOS 118.0 (618) 943-5252.

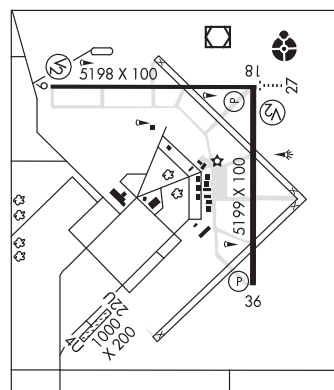
**COMMUNICATIONS:** CTAF/UNICOM 122.8

® **EVANSVILLE APP/DEP CON** 125.6 (1200-0500Z†)

® **INDIANAPOLIS CENTER APP/DEP CON** 128.3 (0500-1200Z†)

**RADIO AIDS TO NAVIGATION:** NOTAM FILE LWV.

(T) **VORW/DME** 108.8 LWV Chan 25 N38°46.19' W87°36.23' at fld. 430/1W.



**LEWIS UNIVERSITY** (See CHICAGO/ROMEIOVILLE on page 47)

**LICOL** N39°54.71' W89°36.19' NOTAM FILE STL.

**NDB (MRW/LOM)** 375 LQ 221° 5.3 NM to Abraham Lincoln Capital. 579/1W.

ST LOUIS