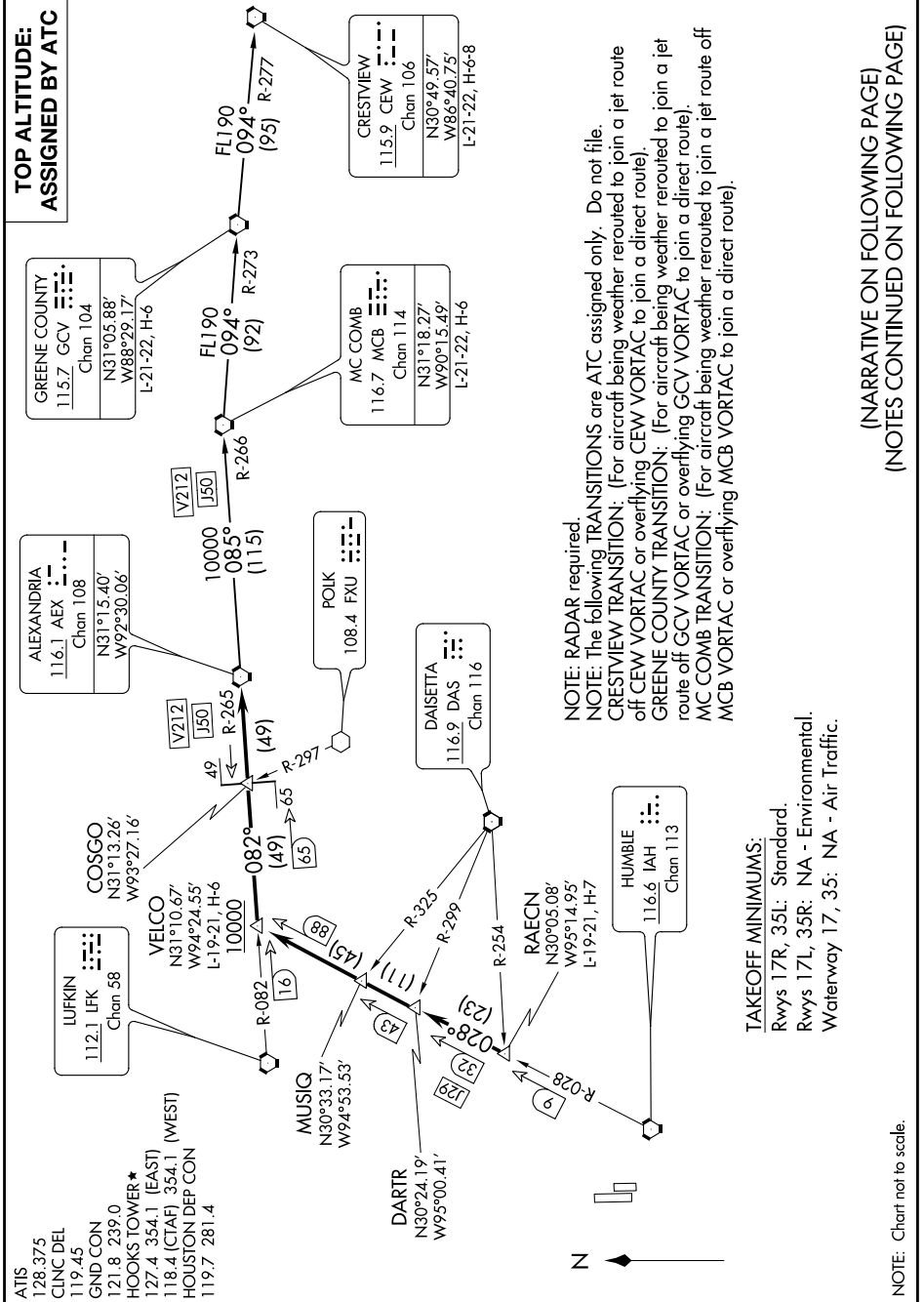


ALEXANDRIA ONE DEPARTURE

SC-5, 22 JUN 2017 to 20 JUL 2017



(NARRATIVE ON FOLLOWING PAGE)
(NOTES CONTINUED ON FOLLOWING PAGE)

NOTE: RADAR required.

NOTE: The following TRANSITIONS are ATC assigned only. Do not file.

CRESTVIEW TRANSITION: (For aircraft being weather routed to join a jet route off CEW VORTAC or overflying CEW VORTAC to join a direct route).

GREENE COUNTY TRANSITION: (For aircraft being weather routed to join a jet route off GCV VORTAC or overflying GCV VORTAC to join a direct route).

MC COMB TRANSITION: (For aircraft being weather routed to join a jet route off MC COMB VORTAC or overflying MCB VORTAC to join a direct route).

TAKEOFF MINIMUMS:
 Rwy 17R, 35L: Standard.
 Rwy 17L, 35R: NA - Environmental.
 Waterway 17, 35: NA - Air Traffic.

NOTE: Chart not to scale.

SC-5, 22 JUN 2017 to 20 JUL 2017

ALEXANDRIA ONE DEPARTURE