

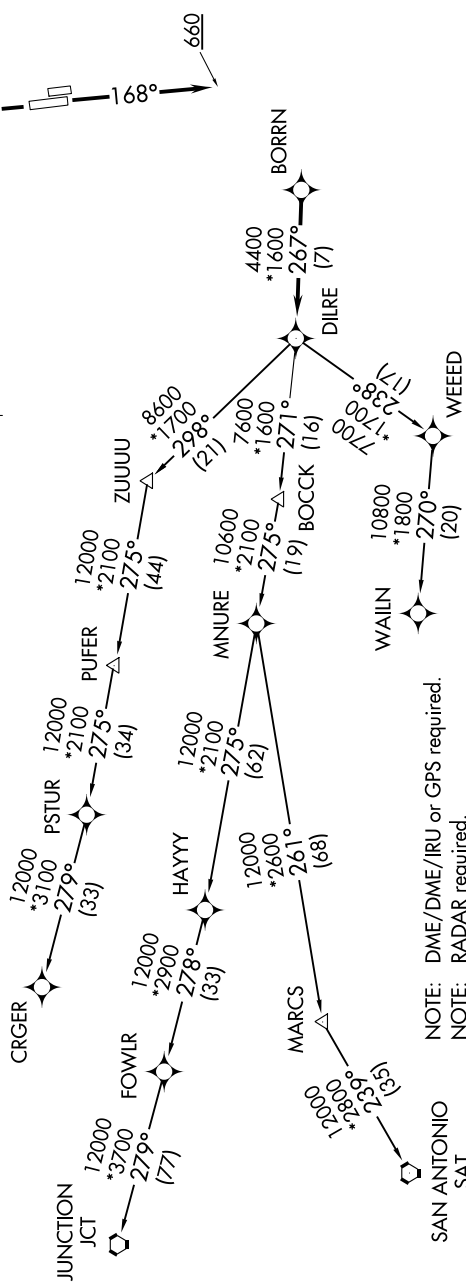
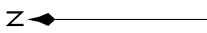
BORRN THREE DEPARTURE (RNAV)

HOUSTON, TEXAS

TOP ALTITUDE:
ASSIGNED BY ATC

TAKEOFF MINIMUMS:
Rwys 17L, 35R: NA - Environmental.
Waterway 17, 35: NA - Air Traffic.
Rwys 17R, 35L: Standard with minimum
climb of 500' per NM to 660.

ATIS 128.375
CLNCDEL 119.45
GND CON 121.8 239.0
HOOKS TOWER * 127.4 354.1 (EAST)
118.4 (CTAF) 354.1 (WEST)
HOUSTON DEP CON 123.8 257.7 (Rwys 17L/R)
119.7 281.4 (Rwys 35L/R)



NOTE: DME/DME/IRU or GPS required.
NOTE: RADAR required.
NOTE: RNAV 1.
NOTE: CRGR TRANSITION ATC assigned only
for aircraft departing 54T, AXH, EFD, GLS,
HPY, IWS, LBX, LVJ, SGR, TME, T00, T41.

(NARRATIVE ON FOLLOWING PAGE)
(NOTES CONTINUED ON FOLLOWING PAGE)

NOTE: Chart not to scale.

SC-5, 22 JUN 2017 to 20 JUL 2017

SC-5, 22 JUN 2017 to 20 JUL 2017

BORRN THREE DEPARTURE (RNAV)

(BORRN3.BORRN) 22JUN17

HOUSTON, TEXAS

DAVID WAYNE HOOKS MEMORIAL (DWH)