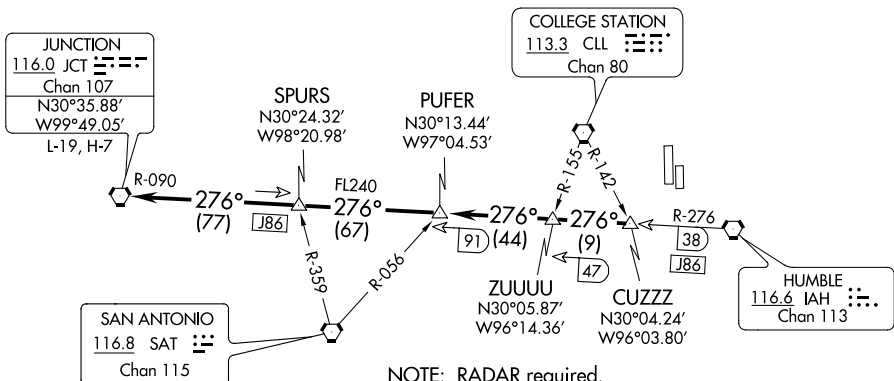


JUNCTION ONE DEPARTURE

TOP ALTITUDE: ASSIGNED BY ATC

ATIS
128.375
CLNC DEL
119.45
HOUSTON DEP CON
123.8 257.7 (Rwys 17L/R)
119.7 281.4 (Rwys 35L/R)
GND CON
121.8 239.0
HOOKS TOWER ★
127.4 354.1 (EAST)
118.4 (CTAF) 354.1 (WEST)

TAKEOFF MINIMUMS
Rwys 17R, 35L: Standard.
Rwys 17L, 35R: NA - Environmental.
Waterway 17, 35: NA - Air Traffic.



NOTE: RADAR required.
NOTE: For aircraft overflying JCT VORTAC on J86 filing FL240 or above.

TAKEOFF OBSTACLE NOTES

- Rwy 17R: Multiple trees beginning 708' from DER, 68' left of centerline, up to 71' AGL/220' MSL.
Multiple hangars beginning 433' from DER, 515' left of centerline, up to 37' AGL/182' MSL.
DME antenna 653' from DER, 256' left of centerline, 13' AGL/162' MSL.
Multiple trees and pole beginning 85' from DER, 294' right of centerline, up to 45' AGL/189' MSL.
- Rwy 35L: Multiple trees and poles beginning 144' from DER, 32' left of centerline, up to 79' AGL/238' MSL.
Multiple hangars and buildings beginning 85' from DER, 9' left of centerline, up to 53' AGL/202' MSL.
Multiple trees, tower and poles beginning 100' from DER, 124' right of centerline, up to 93' AGL/247' MSL.
Vehicle and road 315' from DER, on centerline 15' AGL/166' MSL.
Building 894' from DER, 231' right of centerline, 23' AGL/173' MSL.

NOTE: Chart not to scale.



DEPARTURE ROUTE DESCRIPTION

TAKEOFF ALL RUNWAYS: When entering controlled airspace, climb on assigned heading for RADAR vectors to CUZZZ INT. Maintain ATC assigned altitude. Expect filed altitude 10 minutes after departure, thence

. . . . on IAH R-276 and JCT R-090 to JCT VORTAC.

SC-5, 22 JUN 2017 to 20 JUL 2017

SC-5, 22 JUN 2017 to 20 JUL 2017