

SC-5, 22 JUN 2017 to 20 JUL 2017

ATIS 128.375
CLNCDEL 119.45
GND/CON 121.8, 239.0
HOOKS TOWER* 127.4, 354.1 (EAST)
118.4 (CTAF) 354.1 (WEST)
HOUSTON DEP CON 119.7, 281.4



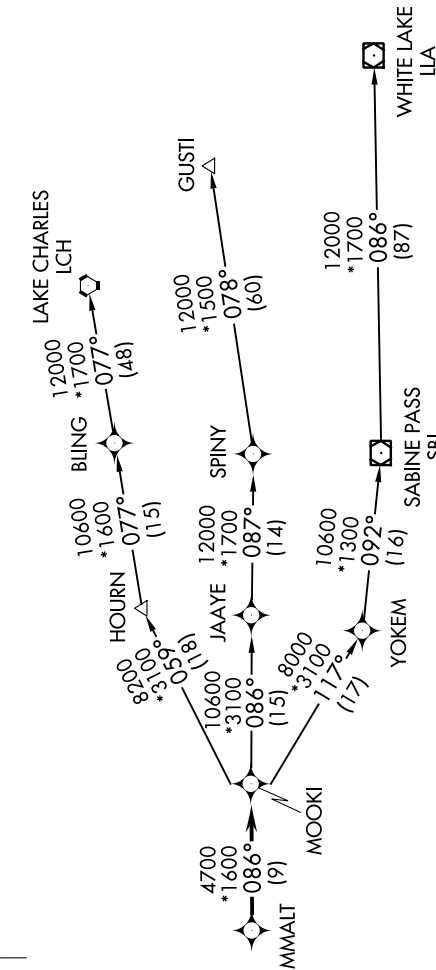
**TOP ALTITUDE:
ASSIGNED BY ATC**

NOTE: DME/DME/IRU or GPS required.

NOTE: RADAR required.

NOTE: RNAV 1.

NOTE: GUSTI and LCH TRANSITIONS ATC assigned only for aircraft departing AXH, EFD, GLS, HPY, IWS, IBX, LVJ, SGR, TME, T00, T41 and 54T.



TAKEOFF MINIMUMS:

Rwys 17L, 35R: NA - Environmental.

Waterway 17, 35: NA - Air Traffic.

Rwys 17R, 35L: Standard with minimum climb of 500' per NM to 660.

(NARRATIVE ON FOLLOWING PAGE)
(NOTES CONTINUED ON FOLLOWING PAGE)

NOTE: Chart not to scale.

SC-5, 22 JUN 2017 to 20 JUL 2017