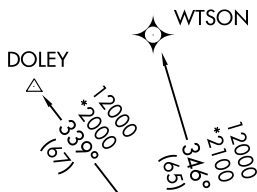


STYCK FIVE DEPARTURE (RNAV)

HOUSTON, TEXAS



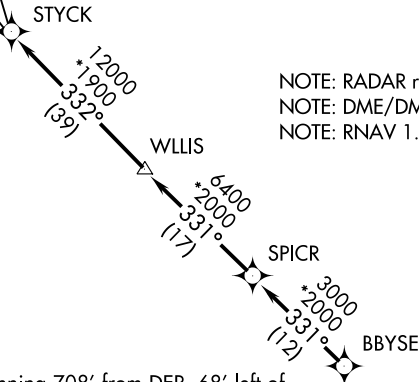
**TOP ALTITUDE:
ASSIGNED BY ATC**

ATIS 128.375
 CLNC DEL 119.45
 GND CON 121.8 239.0
 HOOKS TOWER * 127.4 354.1 (EAST)
 118.4 (CTAF) 354.1 (WEST)
 HOUSTON DEP CON 119.7 281.4

TAKEOFF MINIMUMS

Rwys 17L, 35R: NA-Environmental.
 Waterways 17, 35: NA-Air traffic.
 Rwys 17R, 35L: Standard with minimum climb of 500' per NM to 660.

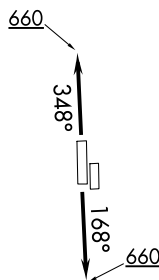
NOTE: RADAR required.
 NOTE: DME/DME/IRU or GPS required.
 NOTE: RNAV 1.



TAKEOFF OBSTACLE NOTES

Rwy 17R: Multiple trees beginning 708' from DER, 68' left of centerline, up to 71' AGL/220' MSL. Multiple hangars beginning 433' from DER, 515' left of centerline, up to 37' AGL/182' MSL. DME antenna 653' from DER, 256' left of centerline, 13' AGL/162' MSL. Multiple trees and pole beginning 85' from DER, 294' right of centerline, up to 45' AGL/189' MSL.

Rwy 35L: Multiple trees and poles beginning 144' from DER, 32' left of centerline, up to 79' AGL/238' MSL. Multiple hangars and buildings beginning 85' from DER, 9' left of centerline, up to 53' AGL/202' MSL. Multiple trees, towers, and poles beginning 100' from DER, 124' right of centerline, up to 93' AGL/247' MSL. Vehicle and road 315' from DER, on centerline, 15' AGL/166' MSL. Building 894' from from DER, 231' right of centerline, 23' AGL/173' MSL.



NOTE: Chart not to scale.



DEPARTURE ROUTE DESCRIPTION

TAKEOFF RWY 17R: Climb heading 168° to 660, expect RADAR vectors to BBYSE, thence. . . .

TAKEOFF RWY 35L: Climb heading 348° to 660, expect RADAR vectors to BBYSE, thence. . . .

. . . .on track 331° to SPICR, then on track 331° to WLLIS, then on track 332° to STYCK, then on (transition). Maintain ATC assigned altitude. Expect filed altitude 10 minutes after departure.

DOLEY TRANSITION (STYCK5.DOLEY)
WTSON TRANSITION (STYCK5.WTSON)

STYCK FIVE DEPARTURE (RNAV)

(STYCK5.STYCK) 22JUN17

HOUSTON, TEXAS

DAVID WAYNE HOOKS MEMORIAL (DWH)

SC-5, 22 JUN 2017 to 20 JUL 2017

SC-5, 22 JUN 2017 to 20 JUL 2017